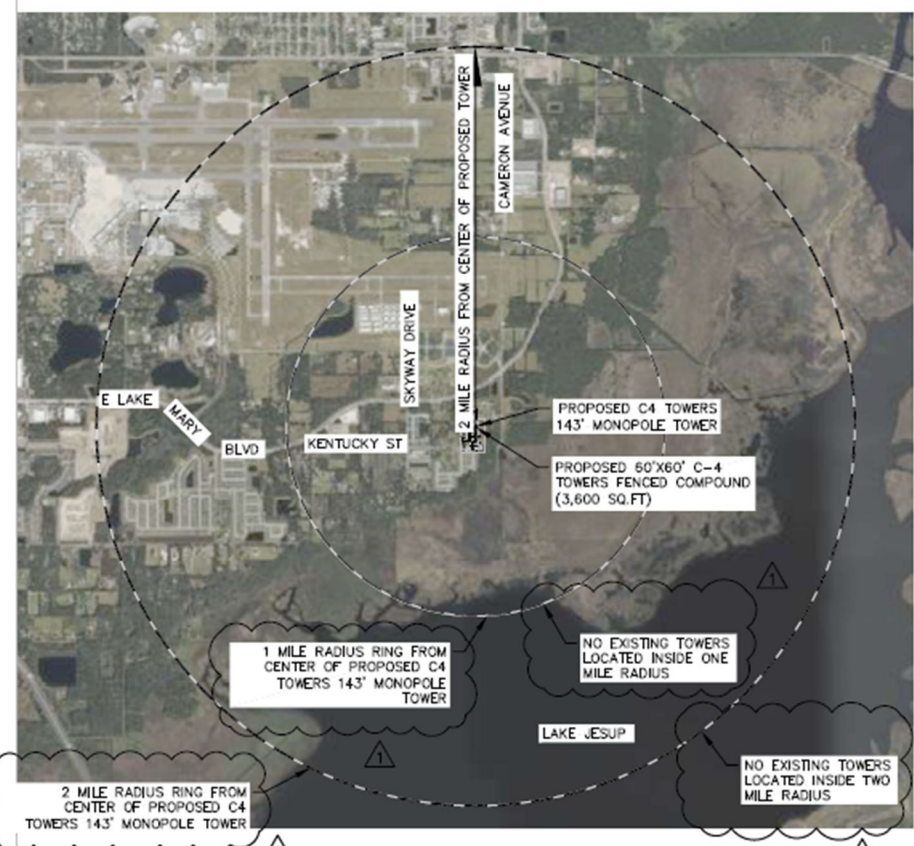
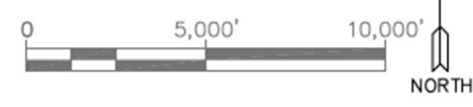


| PROPERTY LINE | DISTANCE TO TOWER EDGE |
|---------------|------------------------|
| 067A | 140.3' |
| 067B | 308.8' |
| 067C | 431.4' |
| 067D | 323.6' |
| 067E | 307.6' |
| 067G | 438.9' |
| 067H | 111.1' |

LOCATION PLAN



AERIAL PHOTOGRAPH LOCATION PLAN

C4 TOWERS, LLC
1123 SOLANA AVENUE
WINTER PARK, FL 32789

PLANS PREPARED BY:
DANIEL DESIGN & ASSOCIATES, LLC
7901 4TH STREET N, SUITE 300
ST. PETERSBURG, FLORIDA 33702
PHONE #: 561-360-0724
REGISTRATION #: L25000268664

REVISIONS

| REV | DATE | DESCRIPTION |
|-----|-----------|-----------------------|
| 1 | 2-16-2026 | PER REVIEWERS REQUEST |
| 2 | 5-18-2026 | PER REVIEWERS REQUEST |

SEAL:

Syed K Haneefuddin
Professional Engineer
No 83669
STATE OF FLORIDA
009260500

PRINTED COPIES OF THIS DOCUMENT ARE VOID AND THE SIGNATURE IS VOID ON ANY ELECTRONIC COPIES

CURRENT ISSUE DATE: **DECEMBER 2025**

PROJECT DATA:

LICENSURE: SYED K. HANEFUDDIN, P.E.
PE #: 83669

ISSUE FOR:
ZONING DRAWINGS

PROJECT INFORMATION:
**C4348 KENTUCKY STREET
FL1B0BA - S - KENTUCKY**
KENTUCKY STREET
SANFORD, FLORIDA 32773
SEMINOLE COUNTY

SHEET TITLE:
LOCATION PLAN

| | | | |
|-----------------|------------------|----------------|---------|
| DRAWN BY: GD | CHECK BY: SKH | DWG NO. 102 | REV NO. |
|-----------------|------------------|----------------|---------|

| | | |
|--------------------|---------------------|----------------------------|
| SCALE: AS SHOWN | APPROVED BY: SKH | SHEET NUMBER C-4 |
|--------------------|---------------------|----------------------------|