



7505 FANNIN STREET, SUITE 440
HOUSTON, TX 77064
(713) 989-6394

SITE PLAN
"JANSEN"
WTP/WELL 1"
6236 Bear Lake Terrace,
Apopka, FL 32703, USA

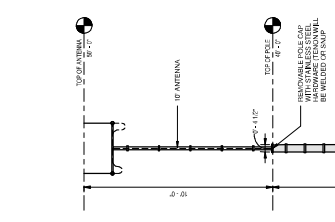
No.	Description	Date

POLE DETAILS

Project Number: TSE-2021-3782
Date: 05-31-24
Drawn By:
Author:
Checked By:
Checker:

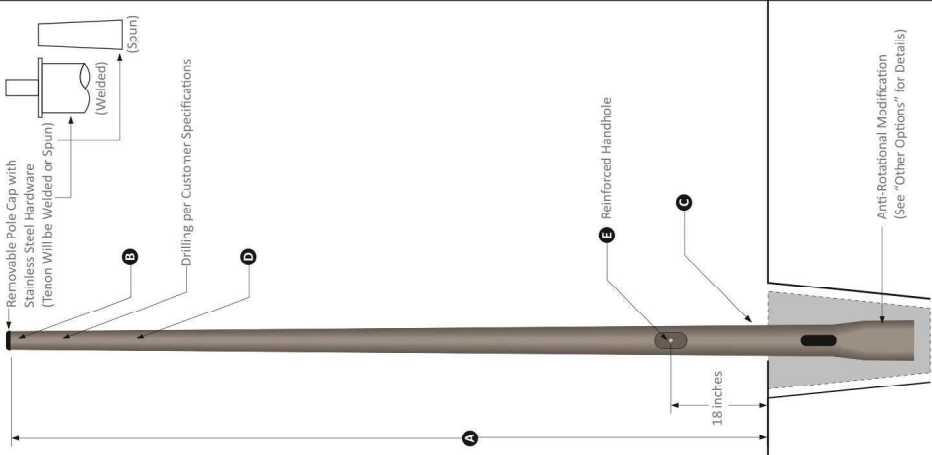
A1.02

Scale: 3/8" = 1'-0"
Drawings and written material appearing herein constitute the intellectual property of the undersigned and shall be duplicated, used or otherwise without written consent of the Architect.



Specification Table	
Mounting Height (ft.)	A 40
Top Diameter (in.)	B 4.5
Butt Diameter (in.)	C 8
Wall Thickness (in.)	D 0.219
Handhole (in.)	E 4 x 6
Embedment (ft.)	F 5

Maximum EPA with 1.3 Gust Factor:	
90 mph:	12.8 Square Feet
100 mph:	8.2 Square Feet
120 mph:	6.4 Square Feet
130 mph:	5.2 Square Feet



PRODUCT DESCRIPTION

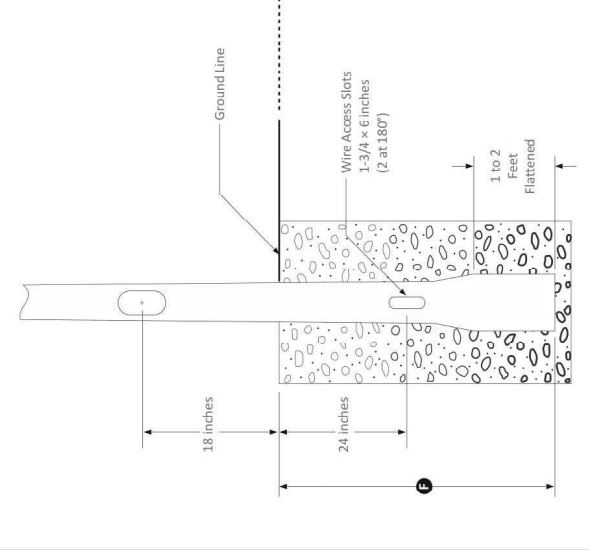
Pole Top Options: Poles are provided with either a removable top cap or a welded aluminum tenon. A 2-3/8 inch outside diameter tenon with 4 inches in length is the most common; however, other tenon options are available. Customers should confirm the appropriate tenon size required by their project prior to ordering. Poles with a top cap can also be drilled during fabrication. The drill pattern and orientation need to be provided by the customer unless Energy Light fixtures are being used for the project.

Pole Shaft: The pole shaft will be constructed of seamless extruded tubes of 6063 aluminum alloy per the requirements of ASTM B221. The shaft assembly shall be full-length heat treated to produce a T6 temper.

Handhole: A reinforced handhole with grouting provision is provided at 1.8 inches from the base end of the pole assembly. Each handhole includes a cover and the attachment hardware.

Color and Finish Options: The standard finish for our aluminum light poles is a natural aluminum finish. Our poles are also available with a commercial grade, powder coat finish for an additional charge. Standard color options include dark bronze, black, gray, green, and white; however, custom color options are also available.

Other Options: The following options are available. Please consult one of our light pole experts for details: Custom tenon size, custom color, electric/GFI outlet, custom pole height and additional handholes. Anti-Rotational Modification is a so an option: Poles will be partially flattened into an anti-rotational, oval cross section, for added stability.



Copyright © 2019 Energy Light, Inc. All Rights Reserved. | 800 E. Northwest Highway, Palatine, IL 60074