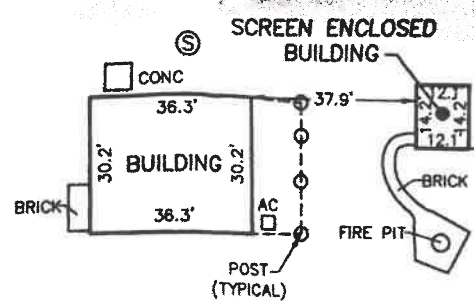
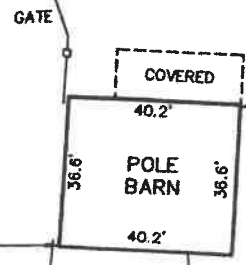


0777.25 (C&M)

662.25' (C&M)
N00°05'18"E

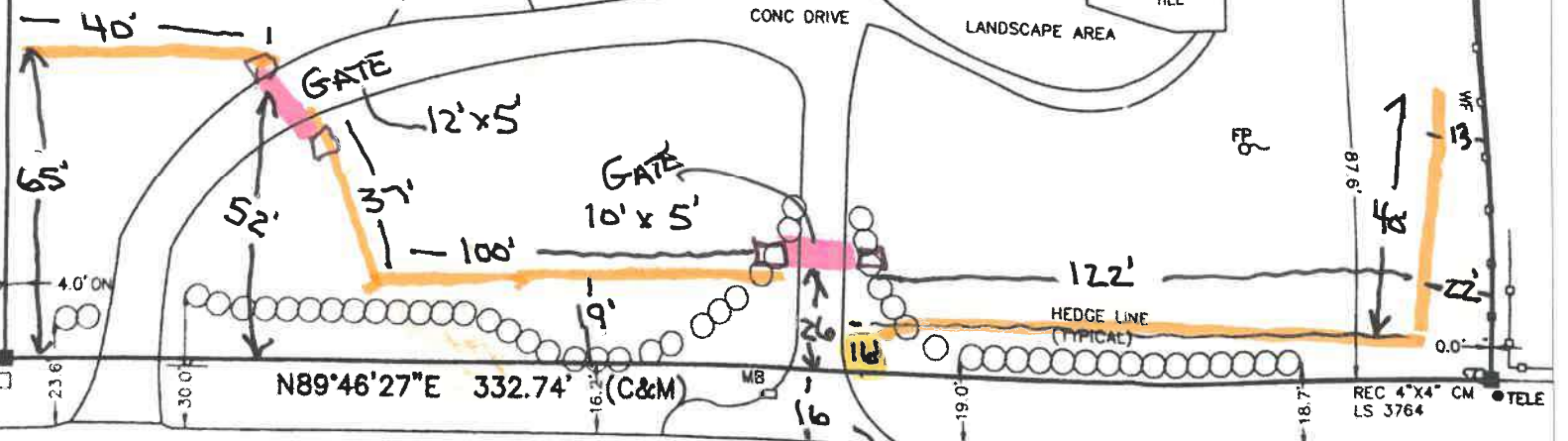
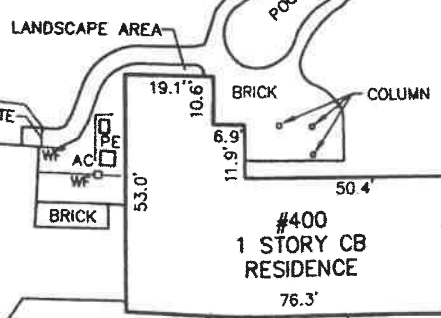
PID: 27-20-32-300-017-J-0000



CONCRETE SEPTIC 300G

CONCRETE SEPTIC

WELL X



N89°46'27"E 332.74' (C&M)

REC 4"x4" CM LS 3764

EDGE OF PAVEMENT EDGE OF ROAD TO PROPERTY LINE