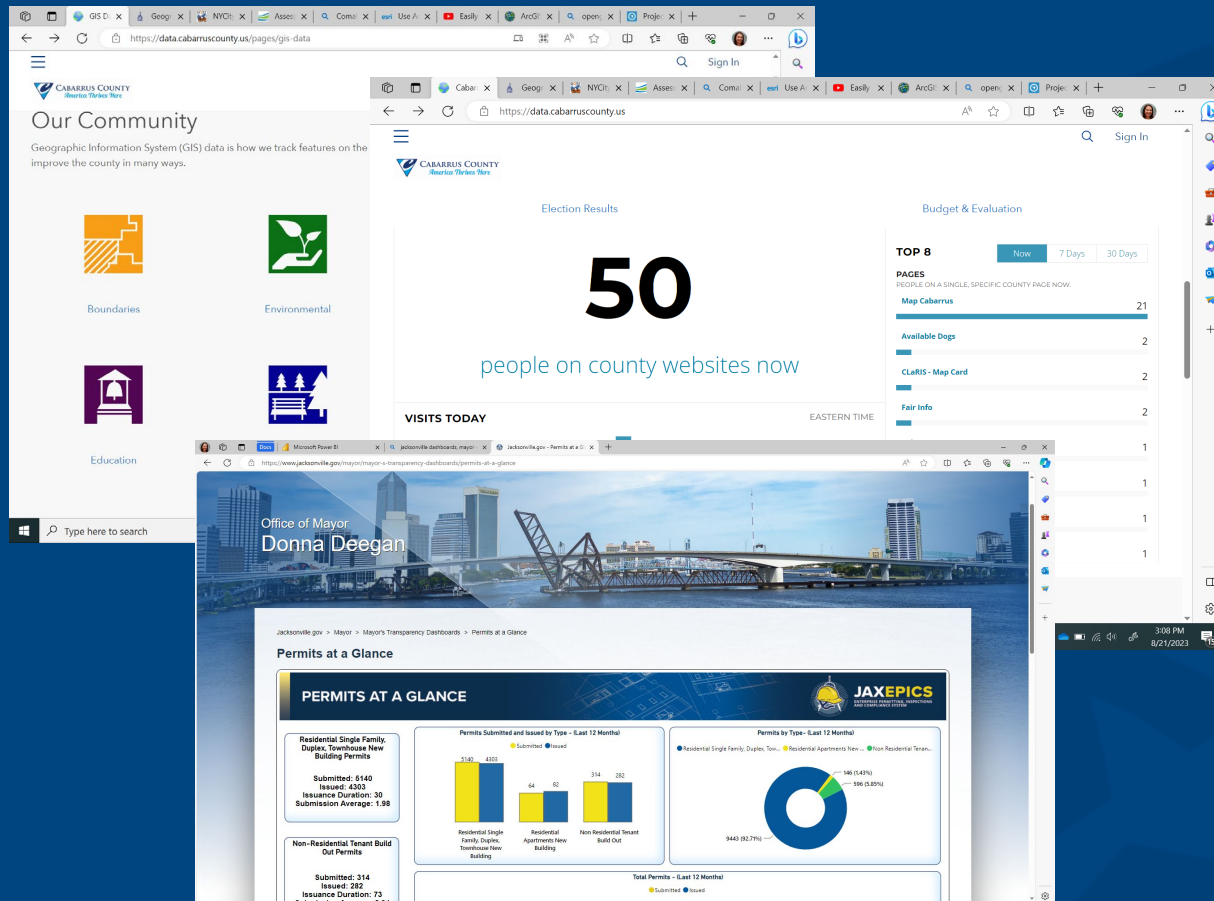


# COUNTY DASHBOARD PROTOTYPE WORKSHOP

Board of County Commissioners

April 9, 2024

# Benchmarking Best Practices



Our Community  
Geographic Information System (GIS) data is how we track features on the improve the county in many ways.

- Boundaries
- Environmental
- Education

Election Results

Budget & Evaluation

TOP 8 PAGES

Page	Count
Map Cabarrus	21
Available Daps	2
CLARIS - Map Card	2
Fair Info	2

50 people on county websites now

VISITS TODAY

Office of Mayor Donna Deegan

Permits at a Glance

**PERMITS AT A GLANCE**

Submitted: 5140  
Issued: 4203  
Issuance Duration: 30  
Submission Average: 1.98

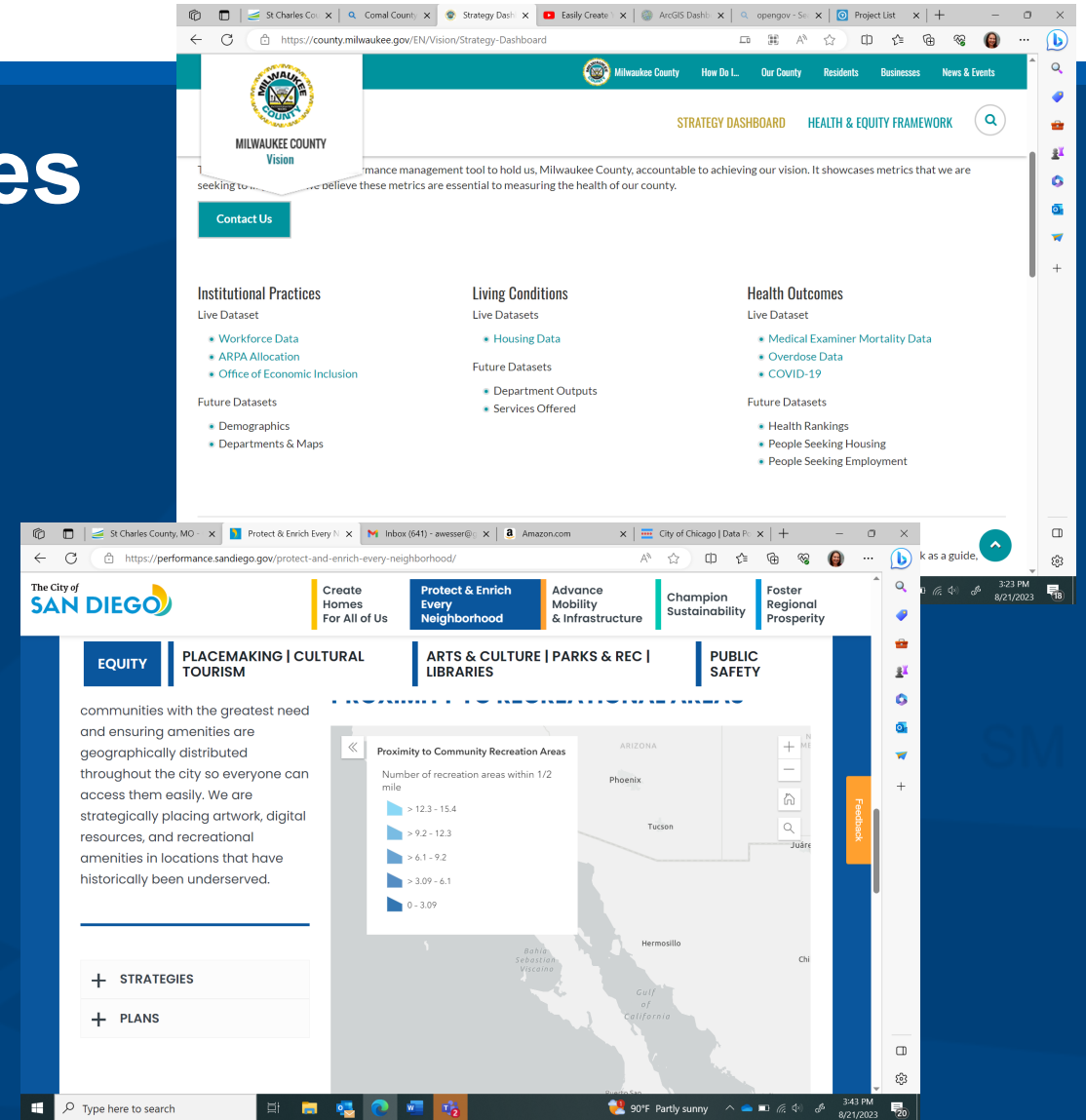
Submitted: 314  
Issued: 282  
Issuance Duration: 73  
Submission Average: 9.68

Permits Submitted and Issued by Type - Last 12 Month

Category	Submitted	Issued
Residential Single Family, Duplex, Townhouse New Building Permits	3138	4203
Residential Single Family, Duplex, Townhouse New Building	44	62
Non-Residential Tenant Build Out Permits	334	282

Permits by Type - Last 12 Month

Category	Count	Percentage
Residential Single Family, Duplex, Townhouse New Building	3138	94.83%
Residential Apartments New Building	44	14.19%
Non-Residential Tenant Build Out	334	106.98%
<b>Total Permits - Last 12 Month</b>	<b>3486</b>	<b>92.77%</b>



Milwaukee County Vision Strategy Dashboard

STRATEGY DASHBOARD HEALTH & EQUITY FRAMEWORK

management tool to hold us, Milwaukee County, accountable to achieving our vision. It showcases metrics that we are seeking to believe these metrics are essential to measuring the health of our county.

Contact Us

**Institutional Practices**

Live Dataset

- Workforce Data
- ARPA Allocation
- Office of Economic Inclusion

Future Datasets

- Demographics
- Departments & Maps

**Living Conditions**

Live Datasets

- Housing Data

Future Datasets

- Department Outputs
- Services Offered

**Health Outcomes**

Live Dataset

- Medical Examiner Mortality Data
- Overdose Data
- COVID-19

Future Datasets

- Health Rankings
- People Seeking Housing
- People Seeking Employment

The City of SAN DIEGO

- Create Homes For All of Us
- Protect & Enrich Every Neighborhood
- Advance Mobility & Infrastructure
- Champion Sustainability
- Foster Regional Prosperity

EQUITY | PLACEMAKING | CULTURAL TOURISM | ARTS & CULTURE | PARKS & REC | LIBRARIES | PUBLIC SAFETY

communities with the greatest need and ensuring amenities are geographically distributed throughout the city so everyone can access them easily. We are strategically placing artwork, digital resources, and recreational amenities in locations that have historically been underserved.

Proximity to Community Recreation Areas

Number of recreation areas within 1/2 mile

- > 12.3 - 15.4
- > 9.2 - 12.3
- > 6.1 - 9.2
- > 3.09 - 6.1
- 0 - 3.09

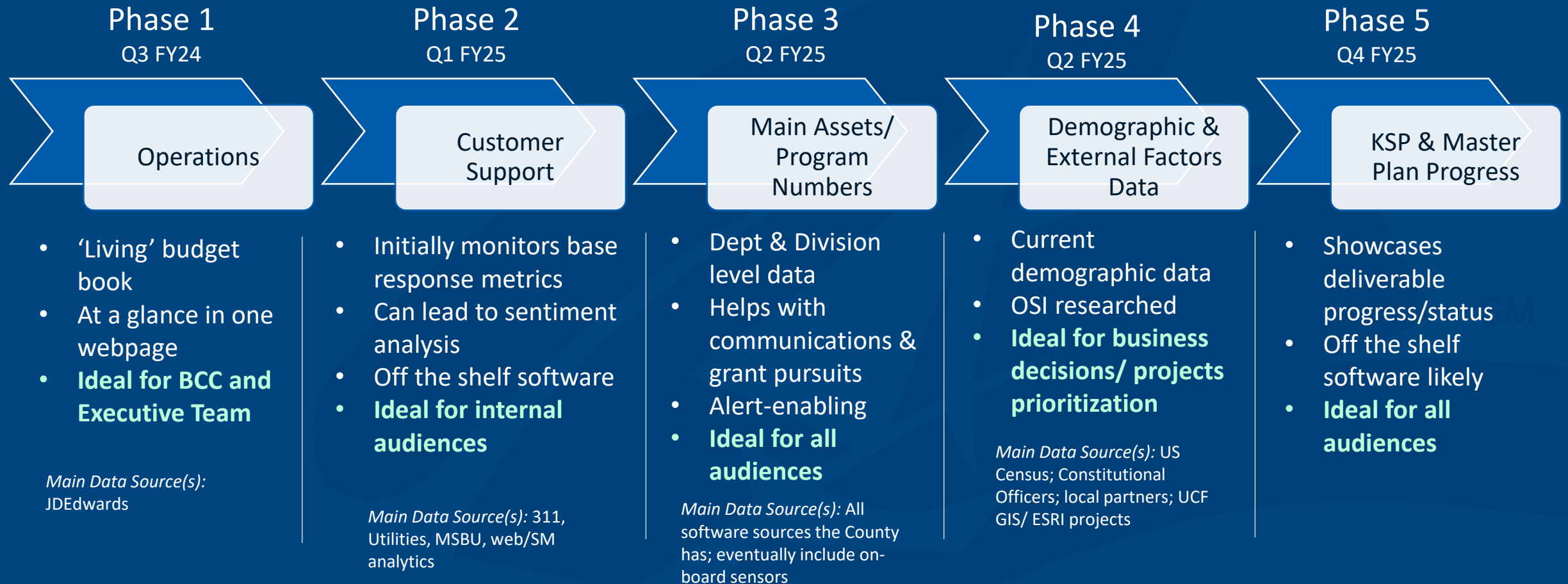
STRATEGIES

PLANS

# Seminole County's Dashboard Major Features

- Initially focused for internal audiences
- Phased approach – adding different dashboard themes
- Scalable in thematic growth as well as in metrics to add
- Proposed framework will support future autonomy from software and hardware
- Mobile-enabled; accessible on Sharepoint
- ADA compliant plan for public consumption

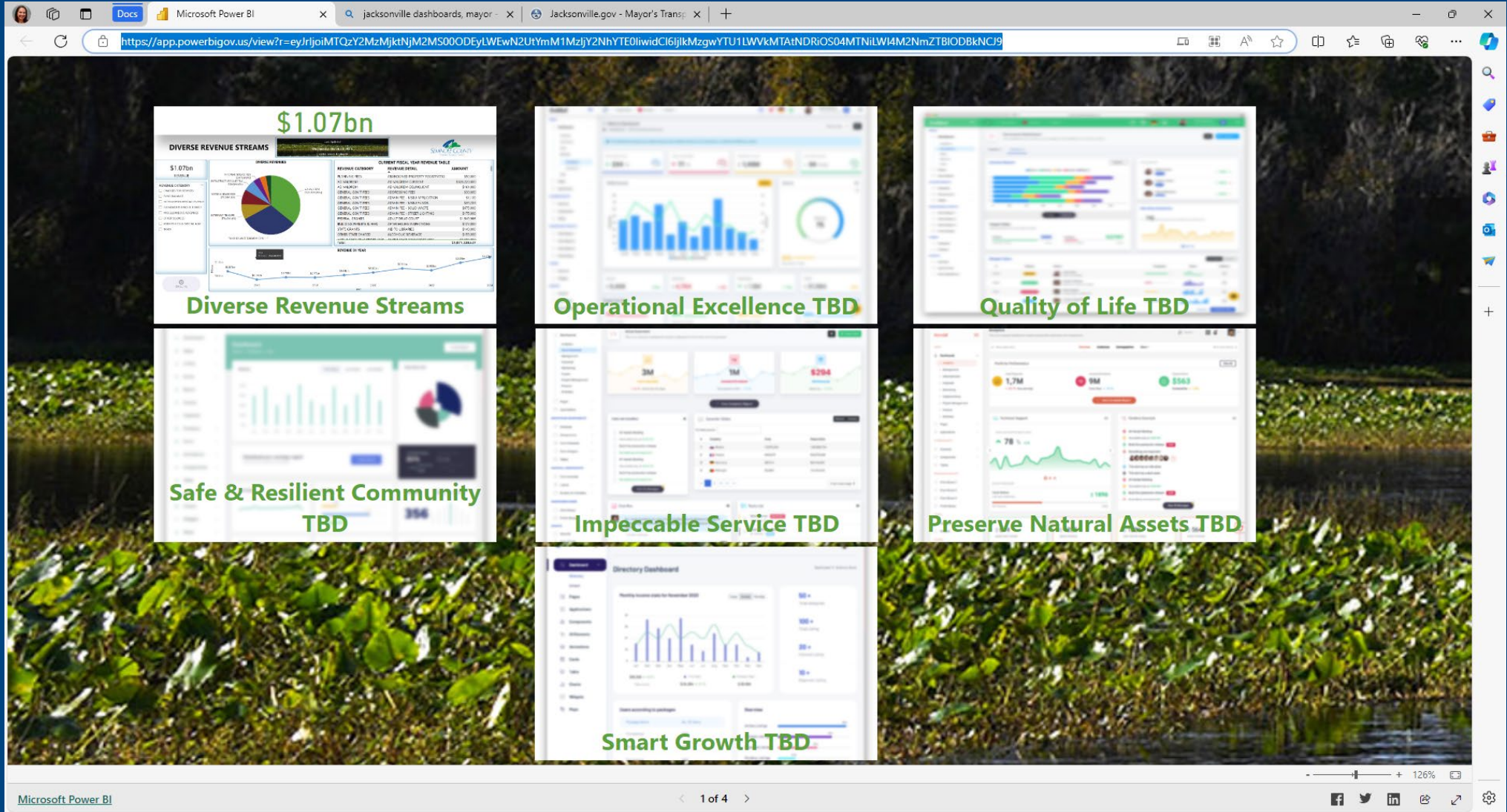
# Dashboard Roll-Out and Themes



# Phase 1 – Draft Operations Dashboard Priorities

- A. Maintain Diverse Budgeted Revenue Streams
- B. Achieve Operational Excellence
- C. Enhance Quality of Life for All Residents
- D. Maximize a Safe, Resilient Community
- E. Provide Impeccable Service to All Constituents
- F. Preserve County's Natural Assets
- G. Implement Smart Growth Strategies





The screenshot displays a Microsoft Power BI dashboard with the following components:

- Browser Tab:** "jacksonville dashboards, mayor - x | Jacksonville.gov - Mayor's Transp - x | +"
- Address Bar:** "https://app.powerbigov.us/view?r=eyJrjoiMTQzY2MzMjktNjM2MS00ODEyLWUwN2UyYmM1MzJjY2NhYTE0iwiidCI6IjlkMzgwYTU1LWwkaMTA1NDRIOS04MTNiLW4M2NmZTBiODBkNCJ9"
- Dashboard Content:**
  - Top Left:** "DIVERSE REVENUE STREAMS" with a total of "\$1.07bn". Includes a pie chart and a table of revenue categories.
  - Top Middle:** "Operational Excellence TBD" with a bar chart and a circular gauge.
  - Top Right:** "Quality of Life TBD" with a horizontal bar chart and a line graph.
  - Middle Left:** "Safe & Resilient Community TBD" with a bar chart and a pie chart.
  - Middle Center:** "Impeccable Service TBD" with three KPI cards (3M, 1M, \$294) and a table below.
  - Middle Right:** "Preserve Natural Assets TBD" with three KPI cards (1.7M, 9M, 553) and a line graph.
  - Bottom Center:** "Smart Growth TBD" with a bar chart and a table.
- Page-Footer:** "Microsoft Power BI", "1 of 4", and social media icons.

# Phase 1 – Draft Operations Dashboard Discussion

- Themes review
- Prioritize metrics available
- What efficiency metrics would you add, and which Depts/  
topical areas of the County are you most interested in seeing  
dashboards?

# Recommendations/Requested Action

- Provide suggestions on format of actual dashboard prototype
- Provide suggestions on preferences for next steps/topics to be dashboarded
- Agree with slate of operational dashboard topics or add/remove items
- Agree on what dashboards should be public facing



# Appendix

# County by Numbers Dash Mock-Up

Operations Dashboard

County by the Numbers

Current Trends

KSP/Project Statuses

Please click on one of the below tiles to see a snapshot of each Departments' performance and assets



Animal Services



Environmental



Emergency Management



Community Safety



Education



Parks



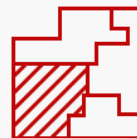
Property



Transportation



Historic GIS Data



Zoning



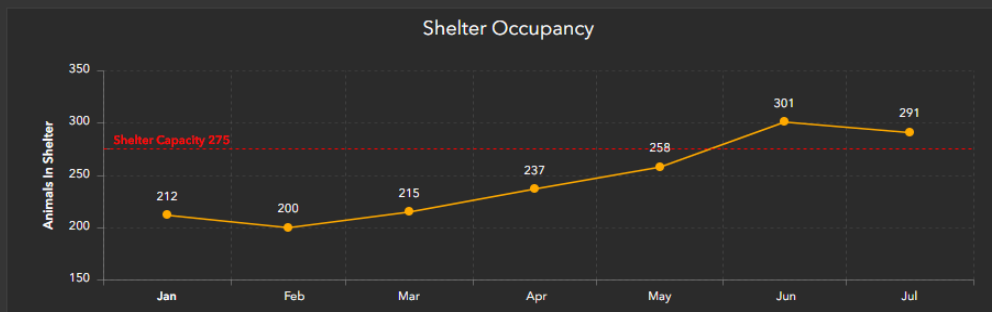
Topography



Aerial Imagery

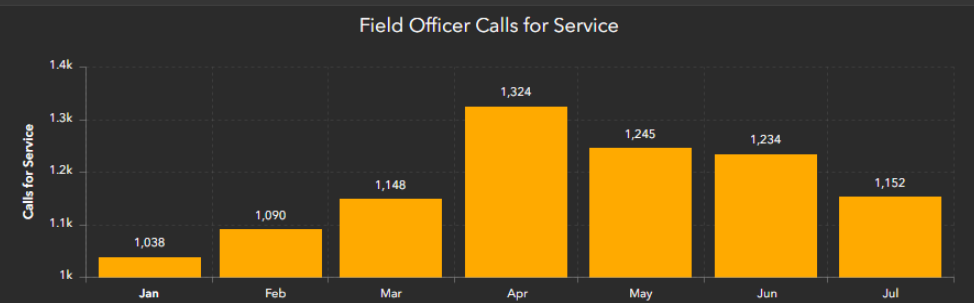
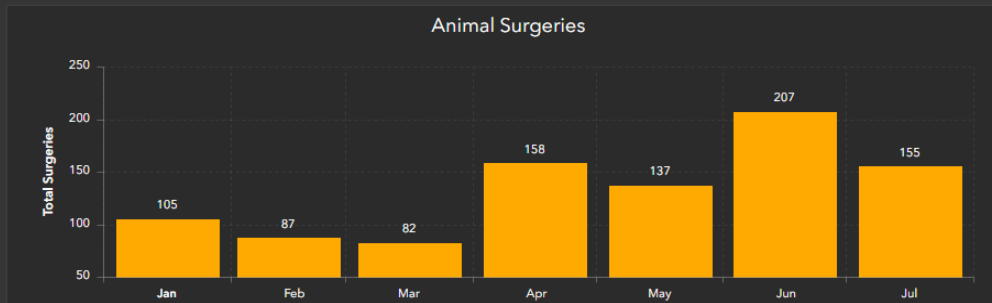
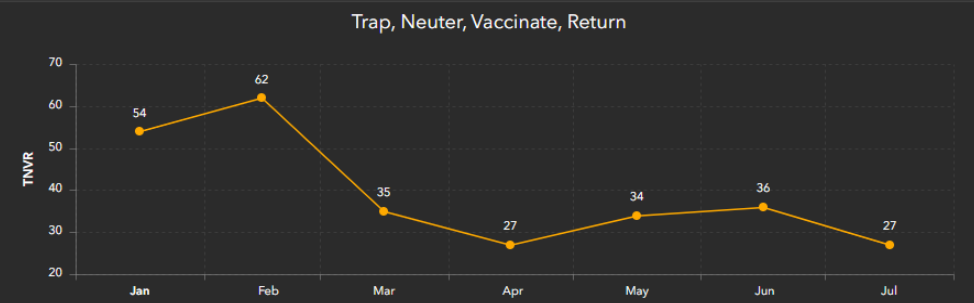
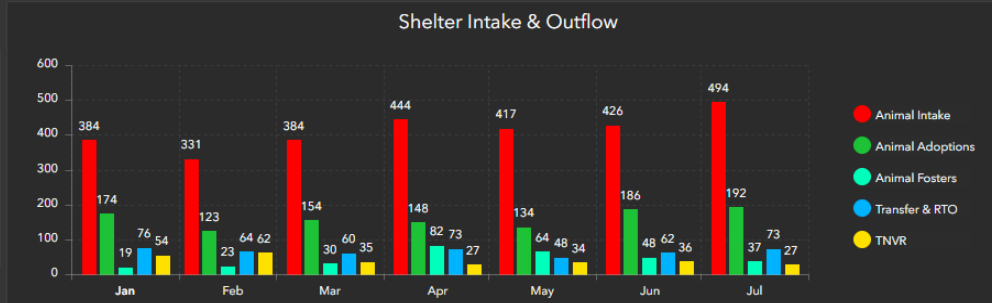


**Seminole County Office of Emergency Management**  
Animal Services Division



**Total Donations**  
**\$18,774**  
Year to date

**Volunteer Hours**  
**9,630**  
Year to date



Please click on one of the below tiles to see a snapshot of each Departments' performance and assets



Animal Services



Environmental



Emergency Management



Community Safety



Education



Parks



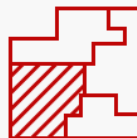
Property



Transportation



Historic GIS Data



Zoning



Topography



Aerial Imagery

Seminole County Hurricane Recovery Dashboard

Temporary Housing

14

TSA / Hotels

2



SBA Applications

1,684

SBA Disbursement

\$36,301,195

FEMA Applications

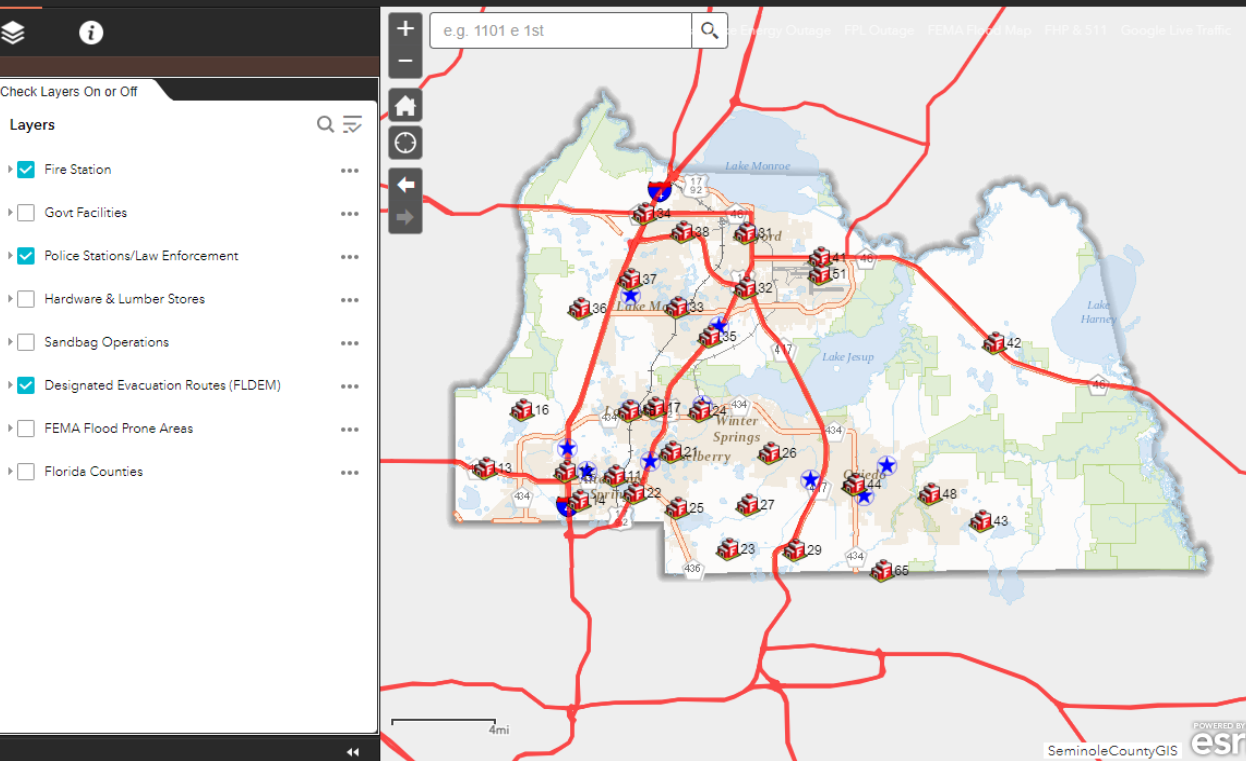
32,456

FEMA Disbursement

\$25,834,452

Government  
Status

Prepare Seminole



County Government  
Open

Public Schools  
Open

Courts  
Open

Debris Estimate  
1,000,000  
Cubic Yards

Damaged Homes

5,238

County Government Cost

\$27,523,587

Estimated

Total Disaster Cost

\$344,274,525

Estimated

Unmet Needs Active

20

Unmet Needs Complete

565

Volunteer Hours

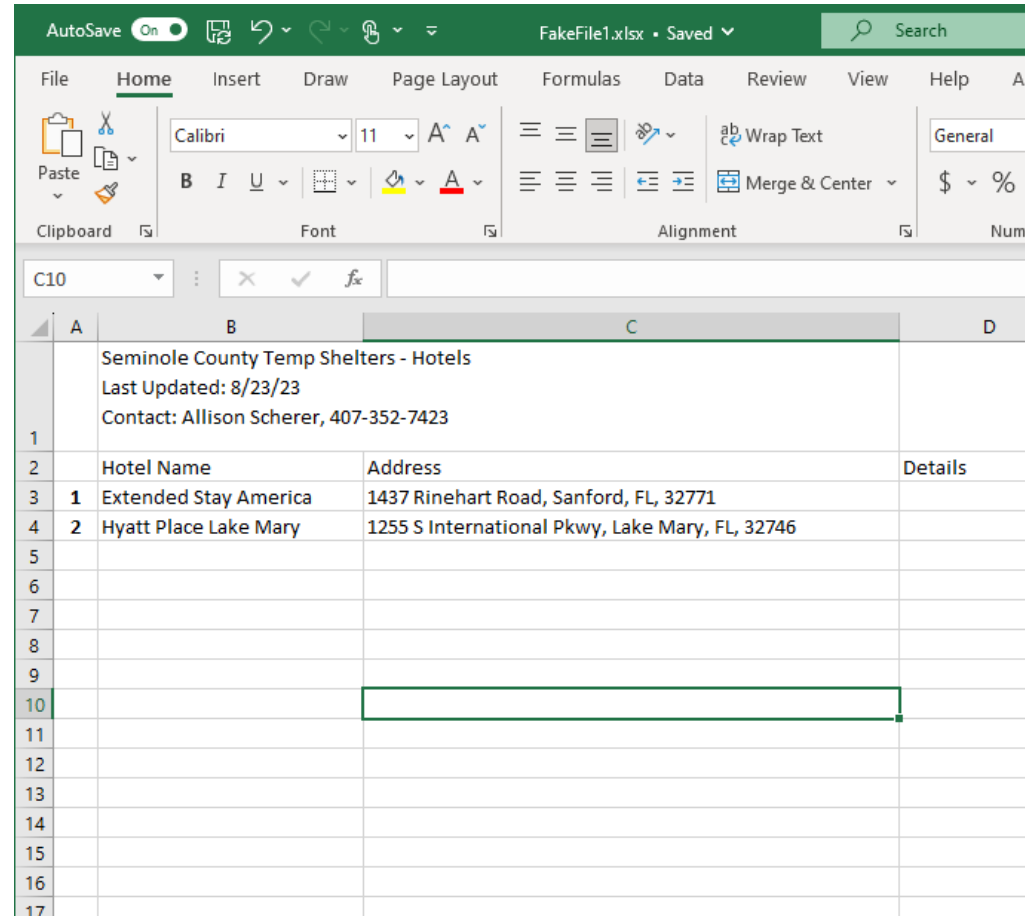
174,800

Debris Removed

100%

The following resources are available regarding Temporary Shelter Assistance:

[List of Temporary Shelter Assistance Hotels](#)



The screenshot shows an Excel spreadsheet with the following content:

Hotel Name	Address	Details
1 Extended Stay America	1437 Rinehart Road, Sanford, FL, 32771	
2 Hyatt Place Lake Mary	1255 S International Pkwy, Lake Mary, FL, 32746	



# Current Trends Plan

- Working with UCF GIS students on income and demographic data down to sub-neighborhood data/heat maps
- Also gathering:
  - Public health (uninsured/low insured, health trends)
  - Public safety stats (drug use, CPS, crime trends)
  - Broadband access/coverage
  - TANF/SNAP/Other Government Allocations
  - Unemployment
  - Business information

# Current Trends Dash Mock-Up

Operations Dashboard

County by the Numbers

Current Trends

KSP/Project Statuses

Please click on one of the below **important trend areas** of the County to see where our investments/grants and services are needed the most:



Public Health



Public Safety



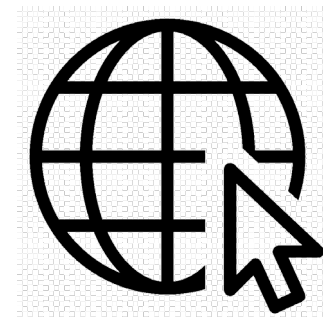
Businesses



Vulnerable Populations

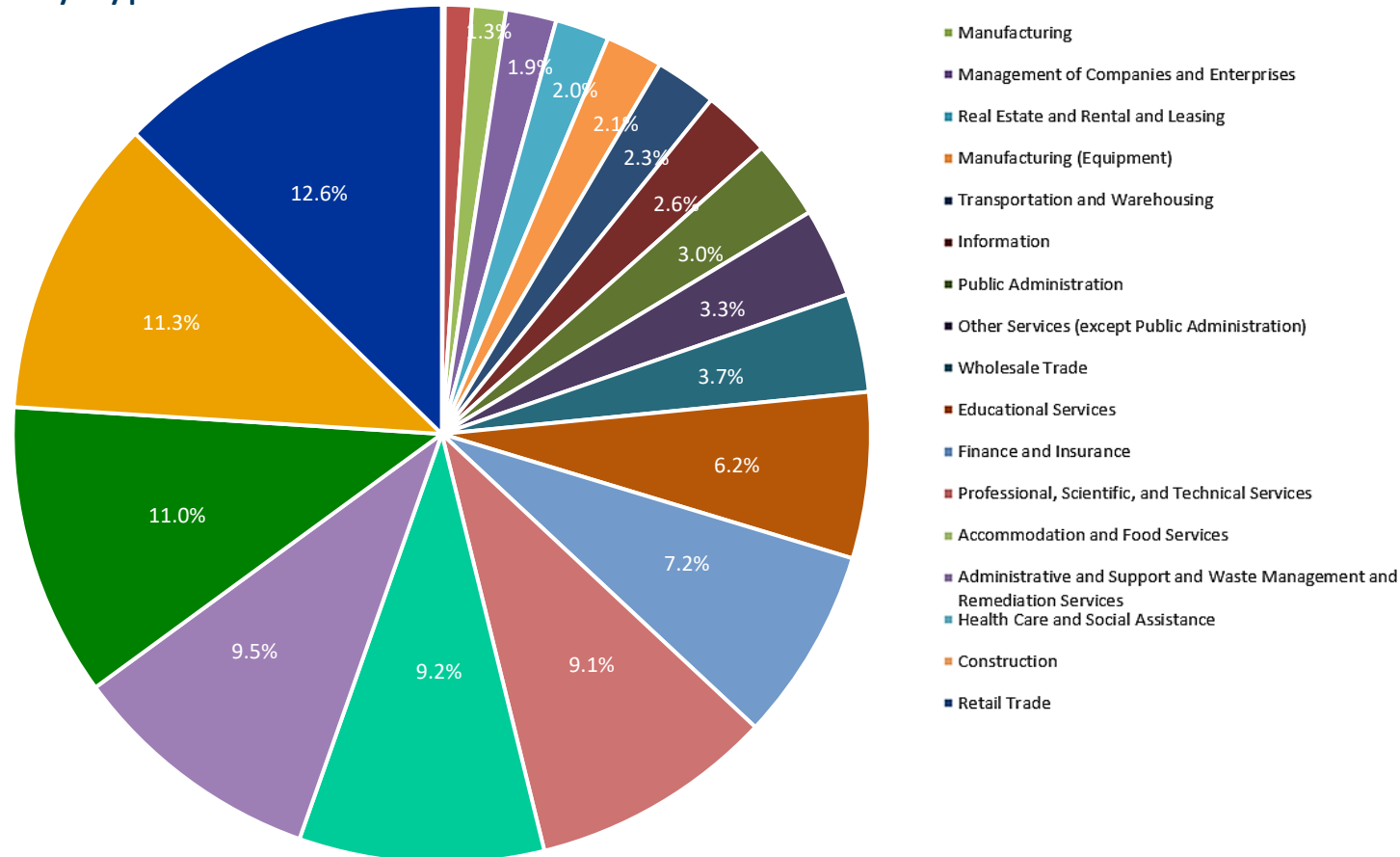


Family Well-Being



Digital Access

## Seminole County Business Data By Type of Business:



There are:  
**22,637**  
Businesses registered  
with the Tax Collector in  
Seminole County

Source: *Seminole County  
Business Tax Receipts*

Last Updated: 11/1/2023  
Update Frequency: Quarterly

Operations Dashboard

County by the Numbers

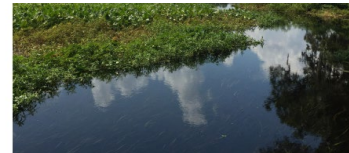
Current Trends

KSP/Project Statuses

Please click on one of the below to see major project and milestone progress updates on County initiatives:



Library Master Plan



Leisure Services Department  
2018 Master Plan Update  
June 2018

Leisure Services Master Plan



Capital Improvement Plan

Floodplain Management Plan



Flood Management Plan



Community Health Needs  
Assessment



Attainable Housing Strategic  
Plan



Please click on one of the below to see major project and milestone progress updates on County initiatives:

 **Healthy People 2030 Progress Tracker**

Healthy People 2030 is a comprehensive set of key disease prevention and health promotion objectives. The health objectives and targets allow communities to assess their health status and build an agenda for community health improvement.



Arlington

  Turn Colorblind Mode On

**Health / Cancer**



Age-Adjusted Death Rate due to Breast Cancer



Age-Adjusted Death Rate due to Cancer



OR

  Turn Colorblind Mode On

**Health / Alcohol & Drug Use**

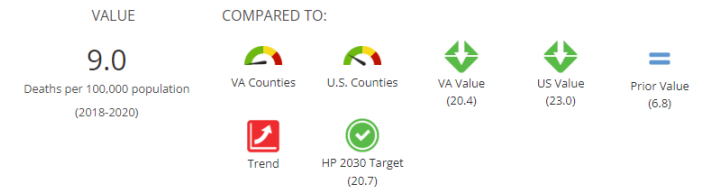
Adults who Drink Excessively

County: Arlington



Death Rate due to Drug Poisoning

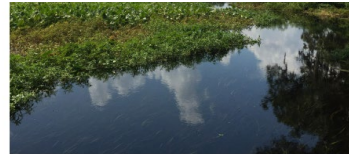
County: Arlington



Please click on one of the below to see major project and milestone progress updates on County initiatives:



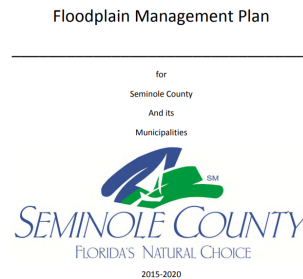
Library Master Plan



Leisure Services Master Plan



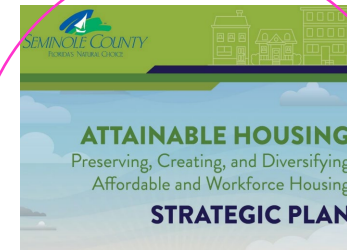
Capital Improvement Plan



Flood Management Plan



Community Health Needs Assessment



Attainable Housing Strategic Plan



[Home](#) / Affordable Housing - Ensuring housing diversity through...

**Affordable Housing** - Ensuring housing diversity through innovative policy-making.

Safe, stable housing is the foundation on which families and entire communities build their futures. And it's not just about shelter—expanding access to housing serves a range of goals, particularly equity and diversity goals. Since Black families are over-represented among those forced out when costs of living soar, Decatur is increasingly becoming an exclusive enclave of white wealth. Attainable housing in the right places also makes biking and walking more convenient and helps reduce our carbon footprint by providing more compact neighborhoods.



Description	Progress	Status
<p>Implementing recommendations from the Affordable Housing Task Force report. <a href="#">↗</a></p> <p>In 2018, the City of Decatur hosted an Affordable Housing Summit to focus on the critical need for affordable housing in our community. The Affordable Housing Task Force, established the following year, drew from a wealth of local experts to create a detailed analysis of needs and strategies to move forward. Decatur has already started to implement these strategies. While some cannot move forward due to legal limitations, most of the recommendations of the Task Force are now included in this Strategic Plan, which makes them official City policy.</p>		
<p>Planning for a comprehensive approach for goals and strategies.</p>		
<p>Considering the full cost and range of housing, including transportation, and create specific initiatives.</p>		