

**SECOND ADDENDUM TO SEMINOLE COMMUNITY COLLEGE
HEATHROW CENTER LEASE**

This Second Addendum, including the attached amended Exhibit B, is made part of and modifies the Heathrow Center Lease (the "Lease") made and entered into as of the eighth day of August, 2006, by and between the District Board of Trustees for Seminole Community College, Florida ("College"), and Board of Commissioners for Seminole County ("County"). College and County hereby agree to amend and modify the above-referenced Lease as follows:

1. All references to "Seminole Community College" are amended to read "Seminole State College of Florida".

2. Article I, Section 1.1(b) is hereby amended to read as follows:

"Leased Premises" – that certain space located in the Heathrow Center containing approximately 1450 gross square feet and being shown as "exclusive space" and "shared use space" on the Leased Premises ("Site Plan," attached hereto as Exhibit "B" and by this reference incorporated herein), plus the Common Area of 218 square feet."

3. Article I, Section 1.1(e) is hereby amended to read as follows:

"Minimum Rent" – the Minimum Rent is \$30,858 per year payable monthly in advance in equal installments of \$2571.50 each, beginning on the "Rental Commencement Date" (as herein below defined)."

Except as modified hereby, the Heathrow Center Lease dated August 8, 2006, between College and County is restated and remains in full force and effect.

SEMINOLE STATE COLLEGE OF FLORIDA

Cyl Daley
Witness:

Cheryl Daley
Print Name

Meghan Sellers
Witness

Meghan Sellers
Print Name

By: Scott D. Howard

Date: 6/25/12


Title: Chairman of the Board

CERTIFIED COPY
MARYANNE MORSE
CLERK OF CIRCUIT COURT
SEMINOLE COUNTY, FLORIDA

BY: [Signature]
DEPUTY CLERK

ATTEST:

BOARD OF COUNTY COMMISSIONERS
SEMINOLE COUNTY, FLORIDA



MARYANNE MORSE
Clerk to the Board of
County Commissioners of
Seminole County, Florida.

Bruce McMenemy

CHIEF DEPUTY

For the use and reliance
of Seminole County only.

Approved as to form and
Legal sufficiency.



County Attorney

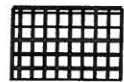
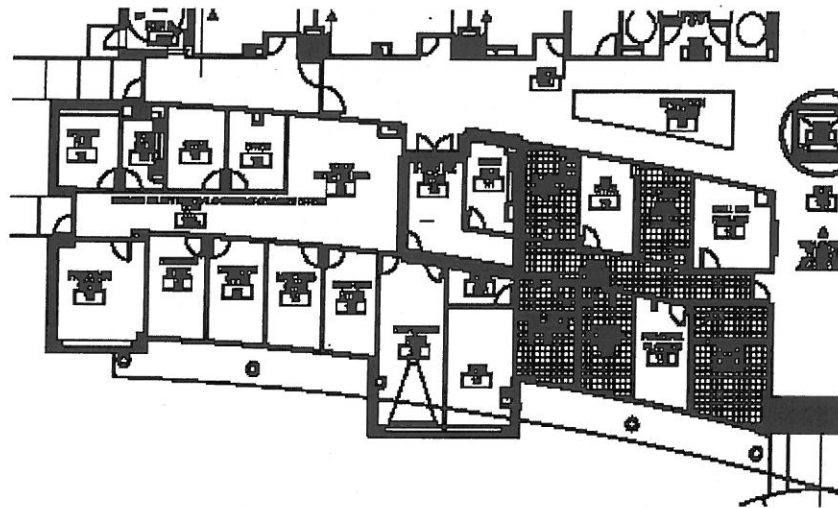
By: 

BRENDA CAREY, Chairman

Date: 7-17-12

As authorized for execution
by the Board of County Commissioners
at their June 26, 20 12
regular meeting.

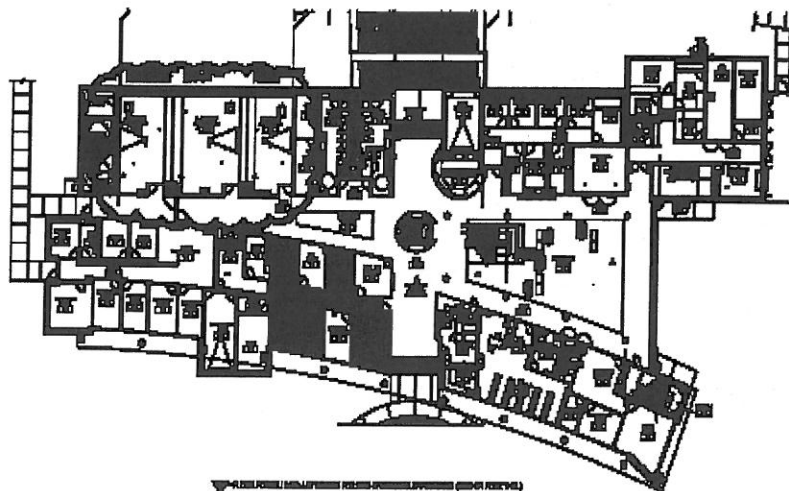
Exhibit B
Leased Premises



- Exclusive Space (1,066 USF)



- Shared Use Space (364 USF)



- Classroom / Meeting Room Space