



SR 417 (Seminole Expressway) to Orlando Sanford International Airport Connector

Concept, Feasibility, and Mobility Study

Seminole County Board of County Commissioners

Michelle Maikisch, CFX Executive Director

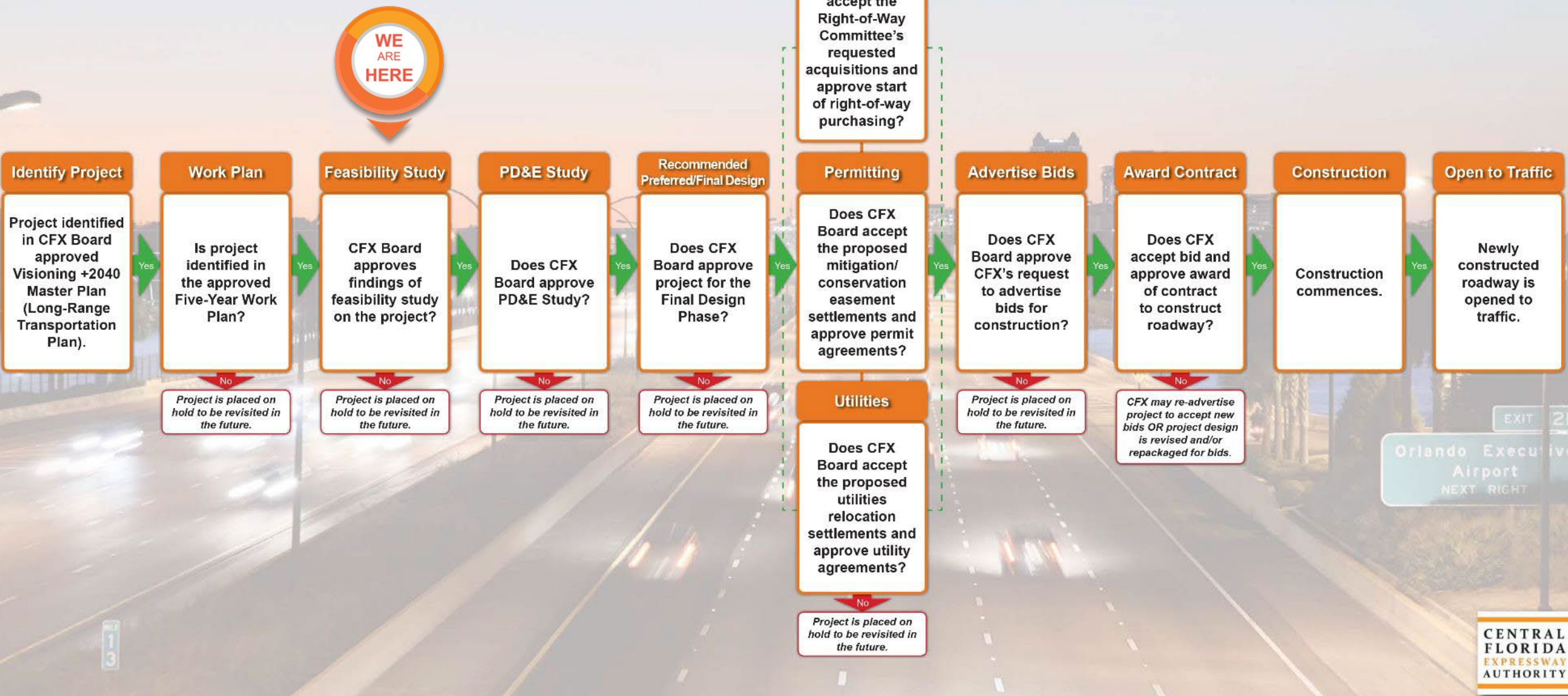
Glenn Pressimone, PE, CFX Chief of Infrastructure

Sunserea Gates, PE, VHB

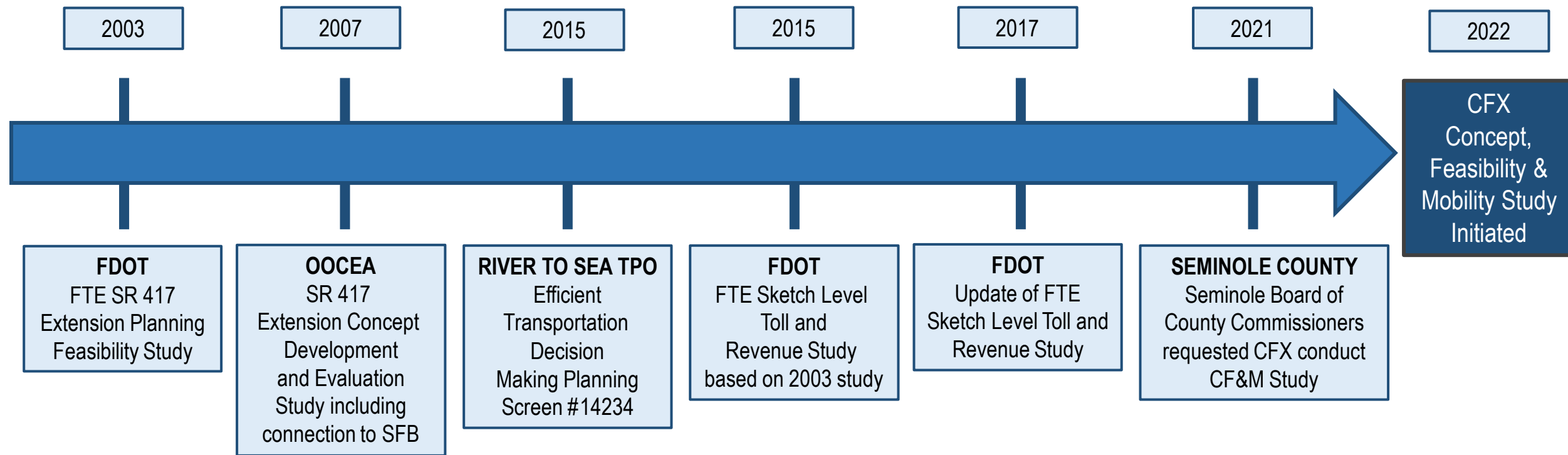
— May 23, 2023 —

PROJECT DEVELOPMENT PROCESS

New Alignment Expansion Projects



Project Background



Study Objectives

Identify Feasible Alternatives to provide a limited access connection within the study limits, including:

- Identify transportation mobility options
- Enhance direct access to the Orlando Sanford International Airport
- Enhance mobility for the area's growing population and economy
- Provide consistency with local plans and policies
- Promote regional connectivity
- Fulfill the recommendation of Seminole Board of County Commissioners to re-evaluate this corridor

CF&M Evaluation Criteria

Social Environment

- ❖ Residential
- ❖ Business
- ❖ Schools
- ❖ Churches
- ❖ Fire Stations
- ❖ Law Enforcement Facilities
- ❖ Cemeteries
- ❖ Approved and Planned Developments

Physical Environment

- ❖ Noise Sensitive Areas
- ❖ Railroads
- ❖ Major Utilities
- ❖ Contamination Sites
- ❖ Hazardous Material Sites
- ❖ Industrial Sites
- ❖ Underground Fuel Tanks

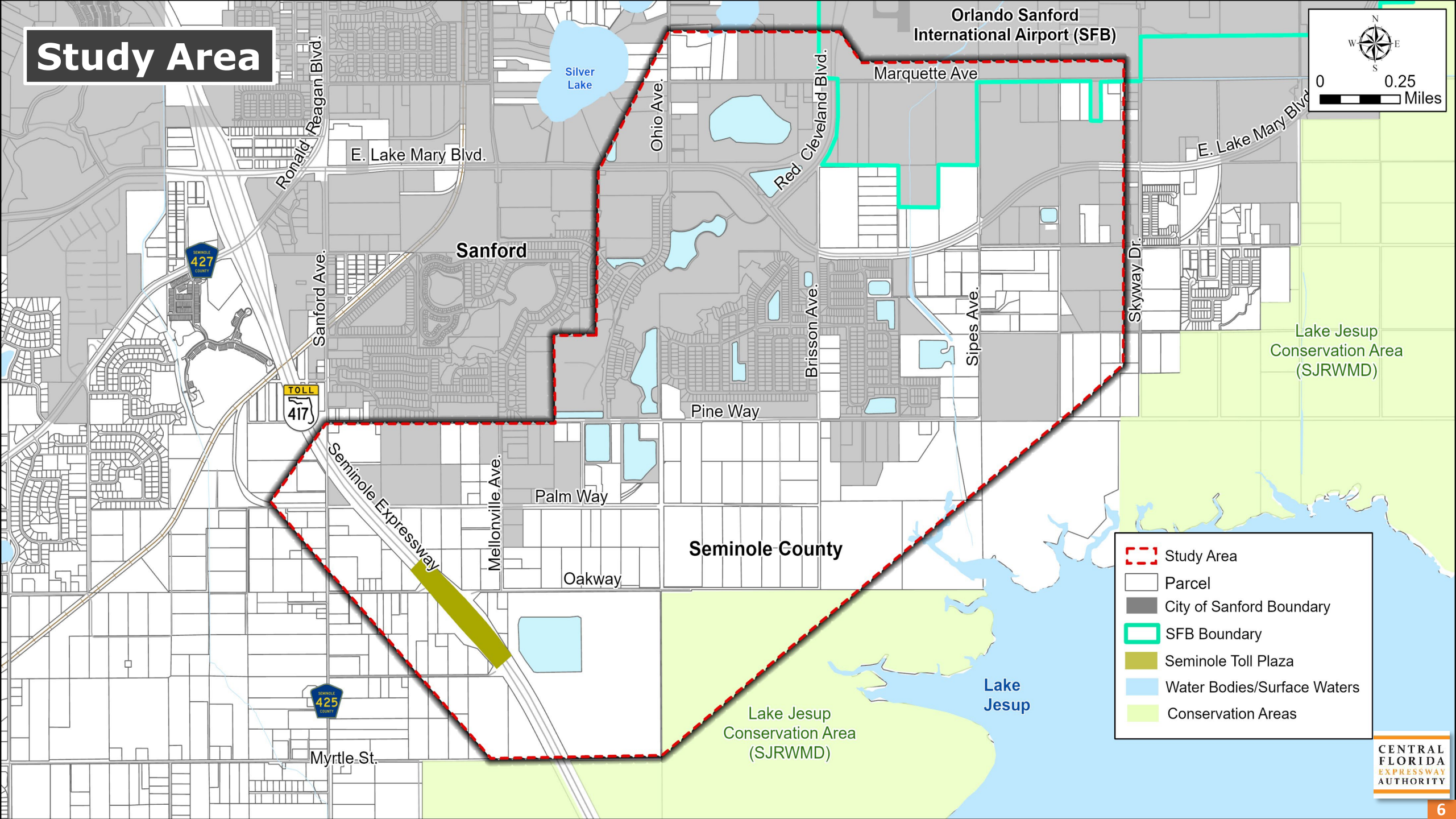
Natural Environment

- ❖ Wetlands
- ❖ Floodplains
- ❖ Protected Species
- ❖ Wildlife Habitat

Cultural Environment

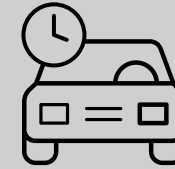
- ❖ Parks & Recreation
- ❖ Public Lands
- ❖ Conservation Areas
- ❖ Trails & Greenways
- ❖ Potential Archaeological Sites
- ❖ Potential Historic Resources

Study Area

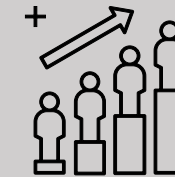


Purpose and Need

- Existing congestion at SR 417 and CR 427/East Lake Mary Blvd. Interchange
- Socioeconomic Growth
 - Airport projected to serve 2.7M passengers by 2037 (91% increase)
 - Seminole County population growth 21% by 2050
 - 10 planned developments or 55% of study area vacant lands
- Anticipated 2050 Traffic Growth
 - 54% increase on East Lake Mary Blvd. west of Red Cleveland Blvd.
- SR 417 and CR 427/East Lake Mary Blvd. Interchange Traffic Volume (2050)
 - Potential Connector diverts 17,000 vehicles/day
- Minimal decrease in traffic at SR 417 and Airport Boulevard Interchange (2050 Build)



**Relieves
Constrained Local
Roadways**



**Supports
Socioeconomic
Growth**



**Improves Regional
Connectivity**

Sociocultural Constraints

Planned Developments

Agricultural Lands

Vacant Parcel

Conservation Area
(SJRWMD)

Seminole County

Orlando Sanford
International Airport (SFB)

Sanford

Concorde

Wyndham
Preserve

Kensington Reserve

Pine Way

Palm Way

Palm Hammock

Oakway

Mecca Hammock

Myrtle St.

Lake Jesup

Lake Jesup
Conservation Area
(SJRWMD)

Lake Jesup
Wilderness Area

- Legend:**

 - Study Area
 - Parcel Boundary
 - SFB Boundary
 - City of Sanford Boundary
 - Water Bodies/Surface Waters
 - Seminole Toll Plaza
 - Existing Neighborhood
 - Trails
 - Trailhead
 - School
 - Sanford Army Reserve
 - Church
 - Boombah Sports Complex
 - Historic Resource Group
 - Historic Structure

Existing Land Use (Sept. 2022)

 - Residential
 - Vacant
 - Agriculture
 - Planned Development (Permitted)
 - Planned Development (Pending)

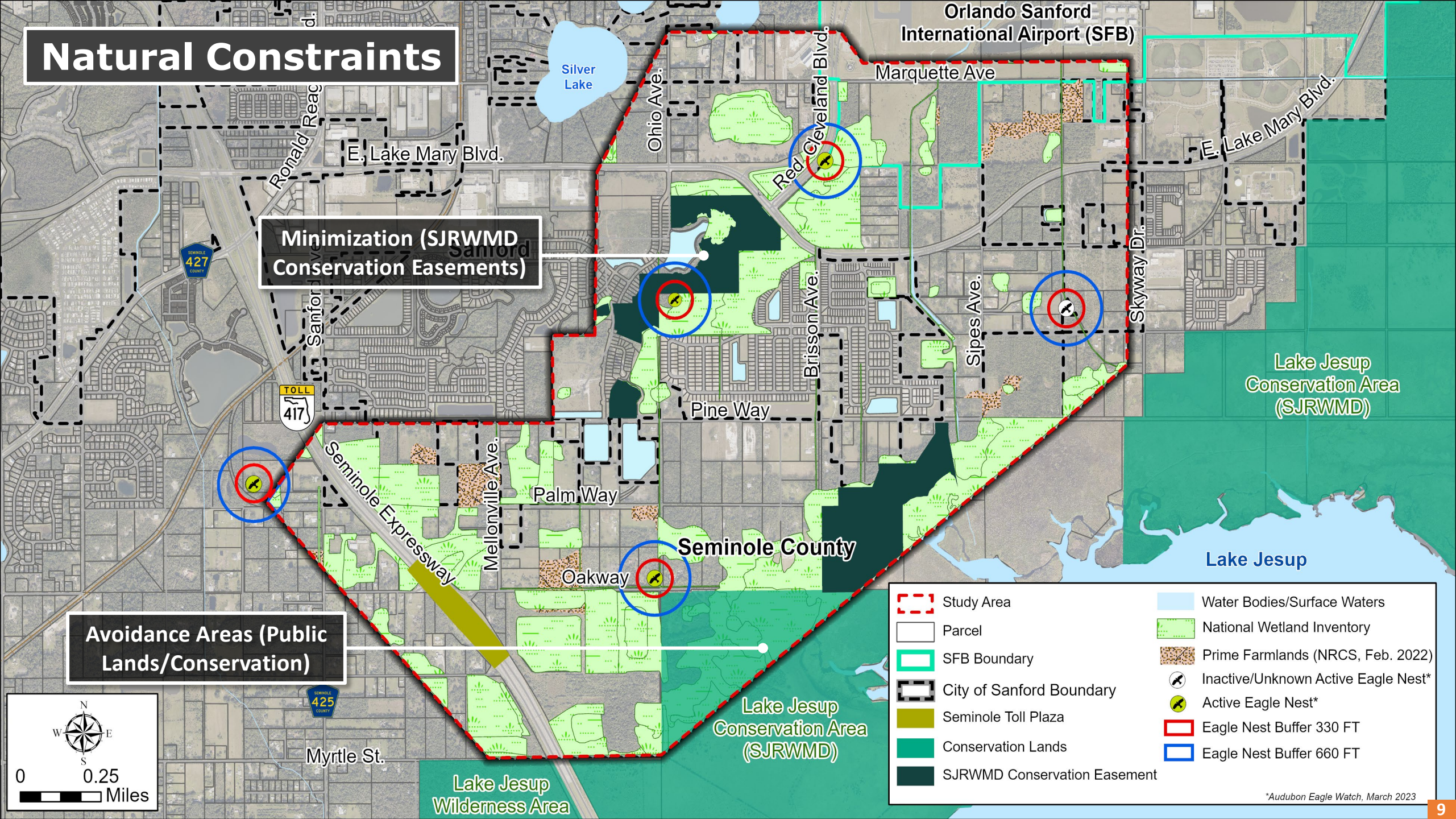


0 0.25 Miles

Natural Constraints

Minimization (SJRWMD
Conservation Easements)

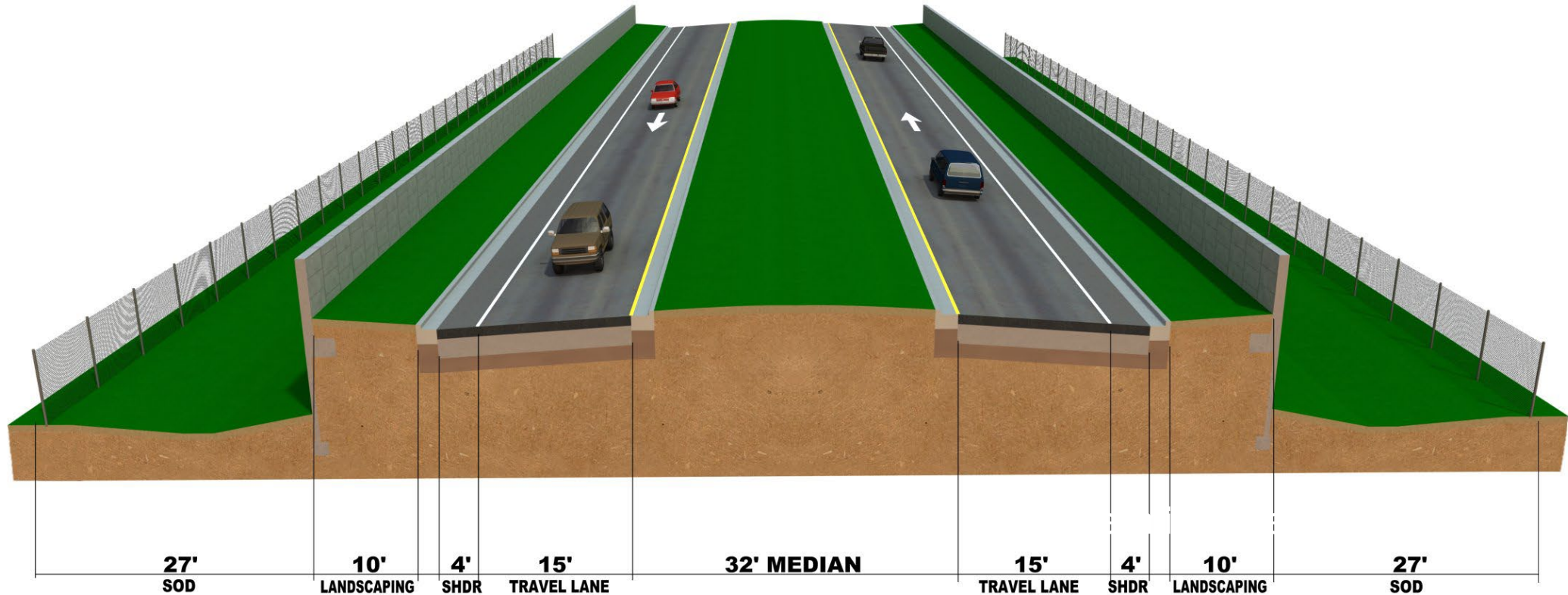
Avoidance Areas (Public
Lands/Conservation)



- Study Area
- Parcel
- SFB Boundary
- City of Sanford Boundary
- Seminole Toll Plaza
- Conservation Lands
- SJRWMD Conservation Easement
- Water Bodies/Surface Waters
- National Wetland Inventory
- Prime Farmlands (NRCS, Feb. 2022)
- Inactive/Unknown Active Eagle Nest*
- Active Eagle Nest*
- Eagle Nest Buffer 330 FT
- Eagle Nest Buffer 660 FT

*Audubon Eagle Watch, March 2023

Proposed Connector Typical Section (2-Lane)



Design Speed = 45 mph
Approximate ROW = 150 feet

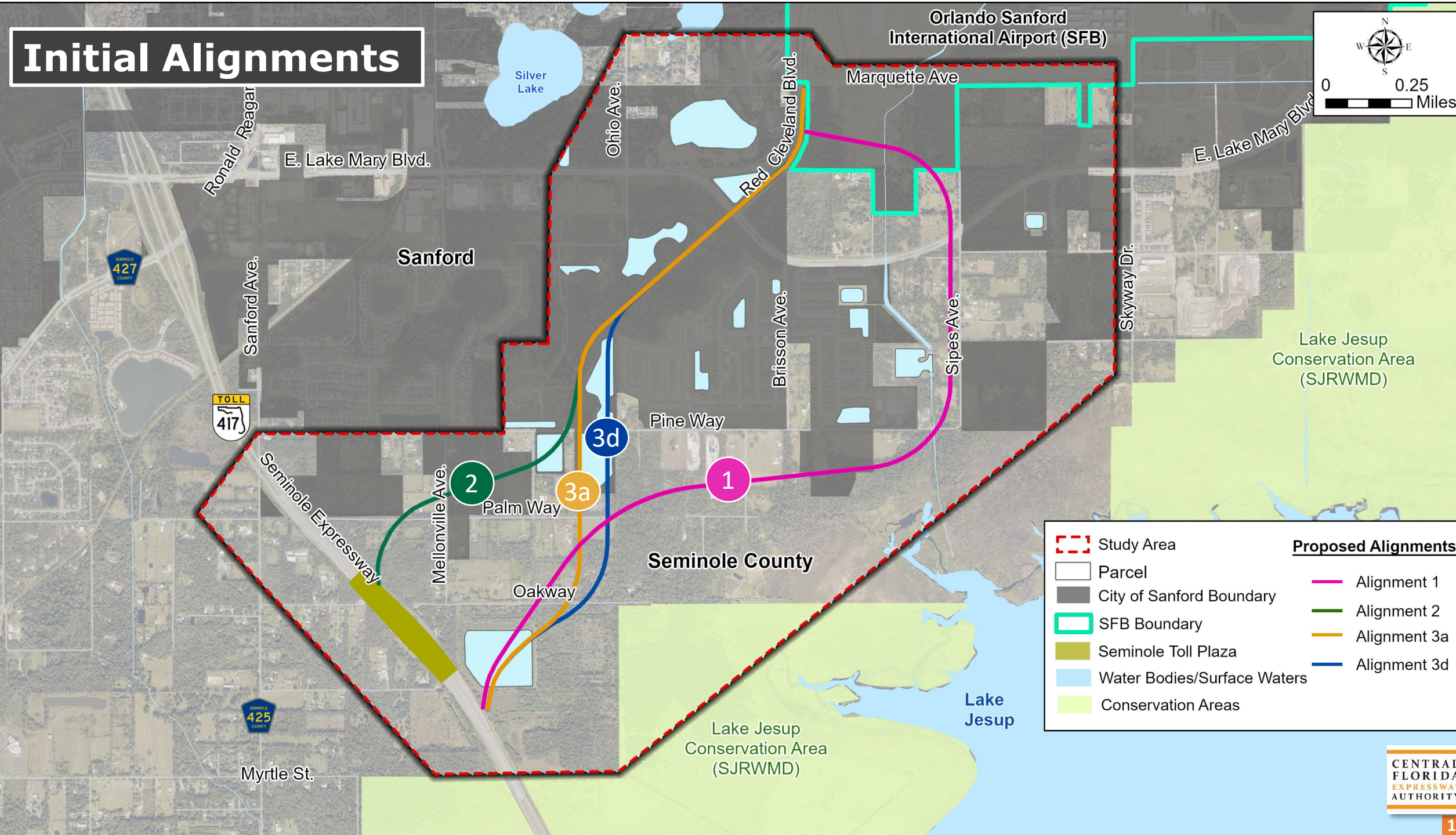
Proposed Interchange at East Lake Mary Blvd.



Preliminary Rendering

- Signalized Intersection
- Access to existing roadways maintained
- Full access to East Lake Mary Blvd.
- Improves future intersection operations

Initial Alignments



Range of Potential Impacts

- Project Length: 2.3 to 3.1 miles
- Projected 2050 AADT: 18,400 to 24,800 vehicles/day
- Anticipated Right-of-Way Needed: 53 to 71 acres
- Current Known Existing/Permitted Residential & Commercial Parcels: 19 to 50
- Public Lands: 0 acres
- Potential SJRWMD Conservation Easements: 2 to 14 acres
- Potential Wetlands: 7 to 19 acres
- Potential Floodplains: 0 to 2 acres
- Bald Eagle Nests in Area: 1 to 3 active nests
- Anticipated Federal-State/listed species involvement: Medium

Public and Agency Input

- ✓ Minimize proximity to Lake Jesup Conservation Area
- ✓ Avoid/Minimize impacts to SJRWMD conservation easements
- ✓ Review potential future wildlife connectivity
- ✓ Identify potential conservation mitigation opportunities
- ✓ Minimize wetland involvement at SR 417 interchange and consider elevated structures
- ✓ Avoid floodplain involvement and increased flooding
- ✓ Improve water quality
- ✓ Provide adequate stormwater management facilities and protect water resources
- ✓ Further evaluation of Alignment 2



St. Johns River
Water Management District



CITY OF
SANFORD
FLORIDA



Public Involvement Opportunities

Public Meeting Anticipated June 2023

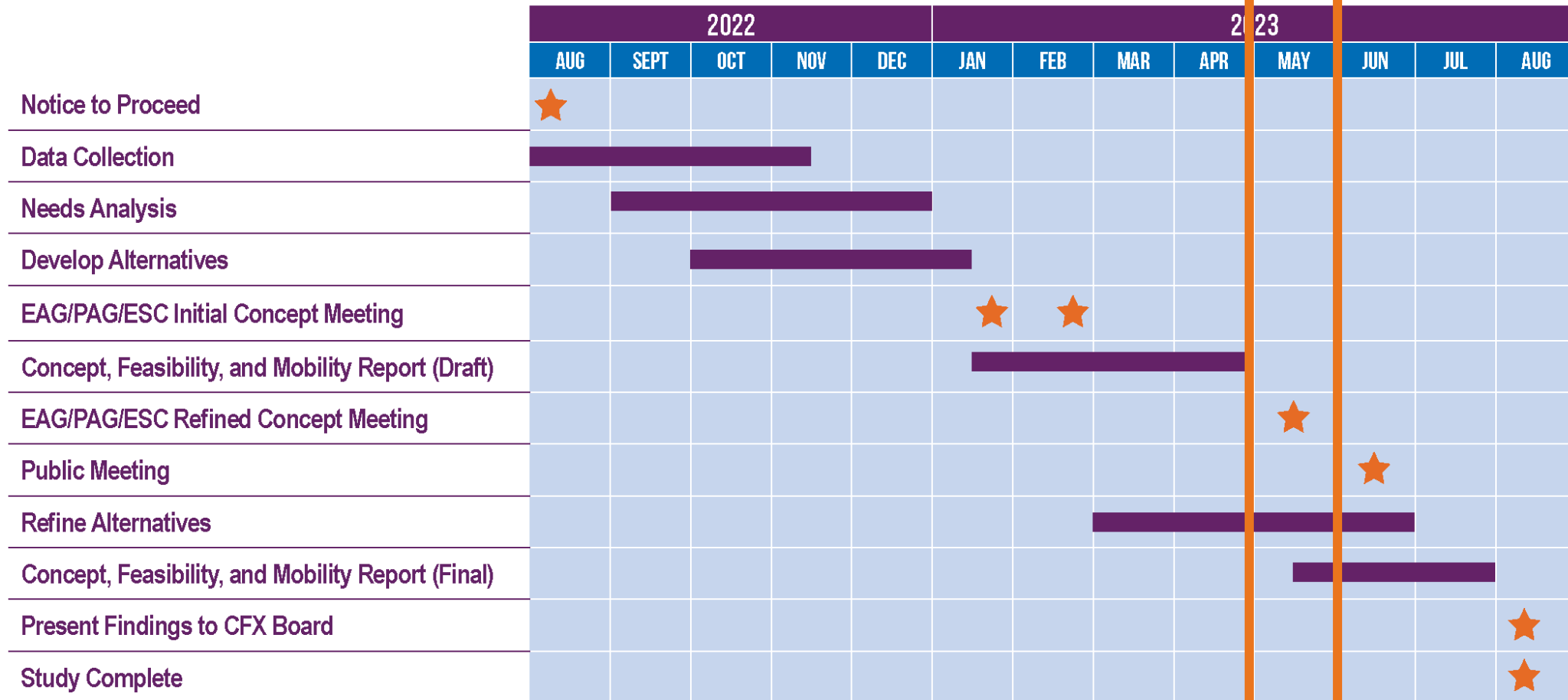
- Shortened study website address:
<http://bit.ly/SR417AirportConnector>
- CFX Web Address:
www.CFXway.com



Shemir Wiles
Public Involvement Coordinator
407-802-3210
ConceptStudies@CFXway.com

CF&M Schedule

(Subject to Change)





CENTRAL
FLORIDA
EXPRESSWAY
AUTHORITY

THANK YOU!