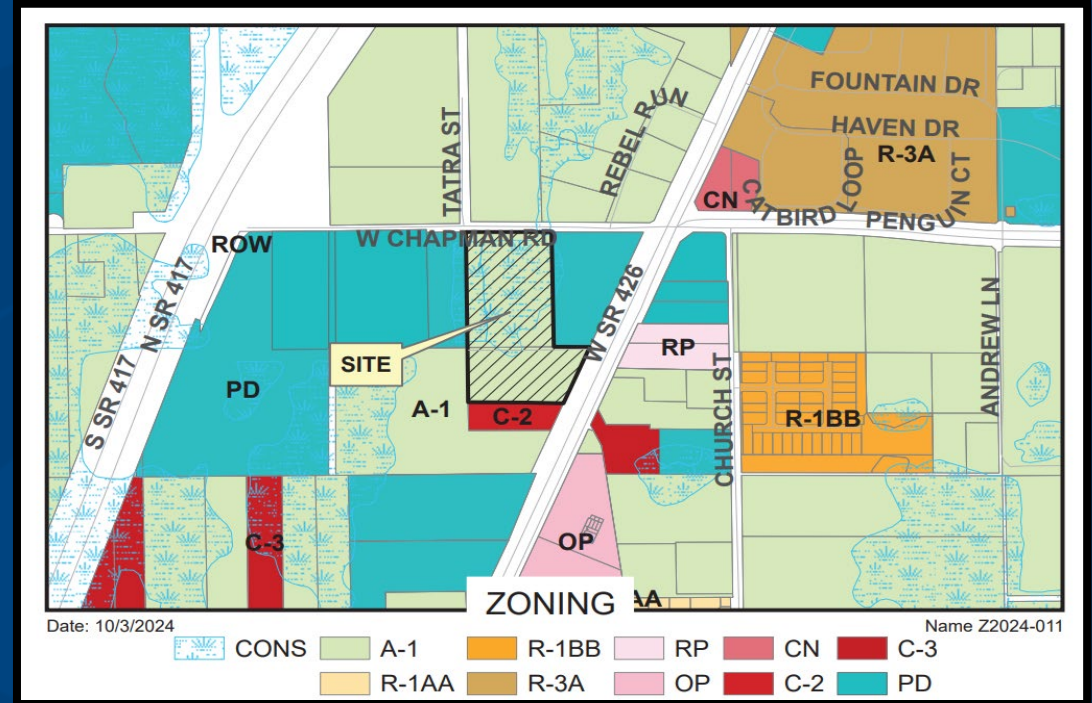
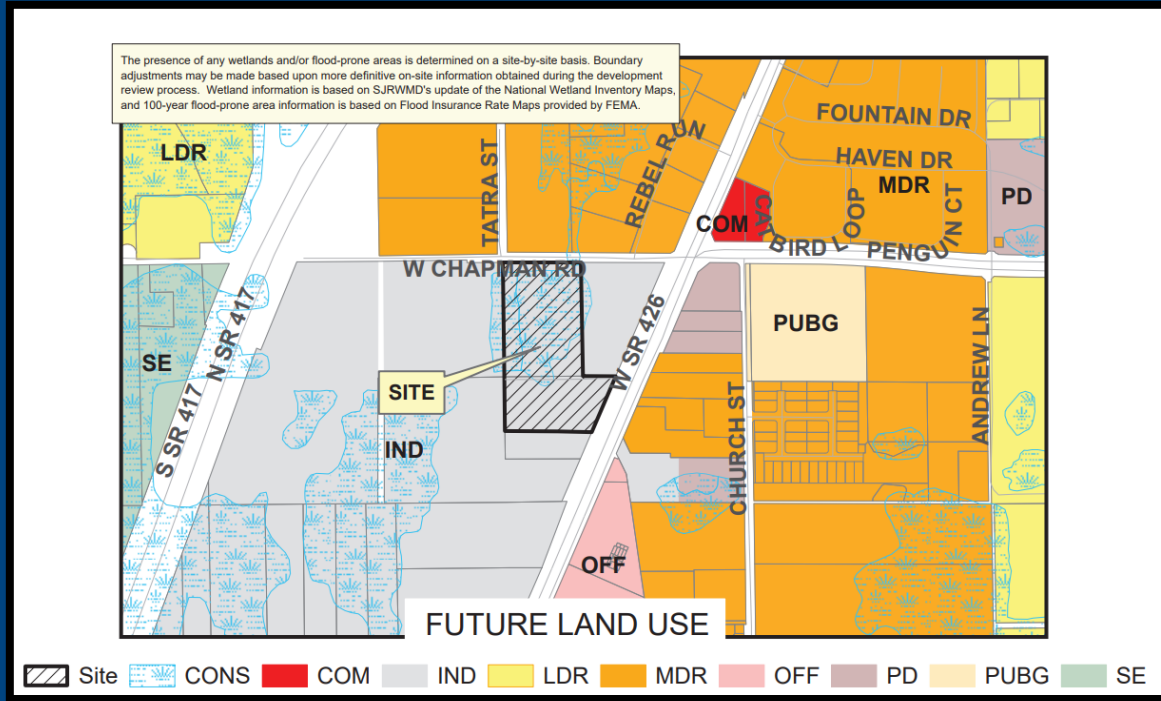


EAGLE PASS REZONE

Applicant: Eagle Pass Properties, LLC – Larry Jordan

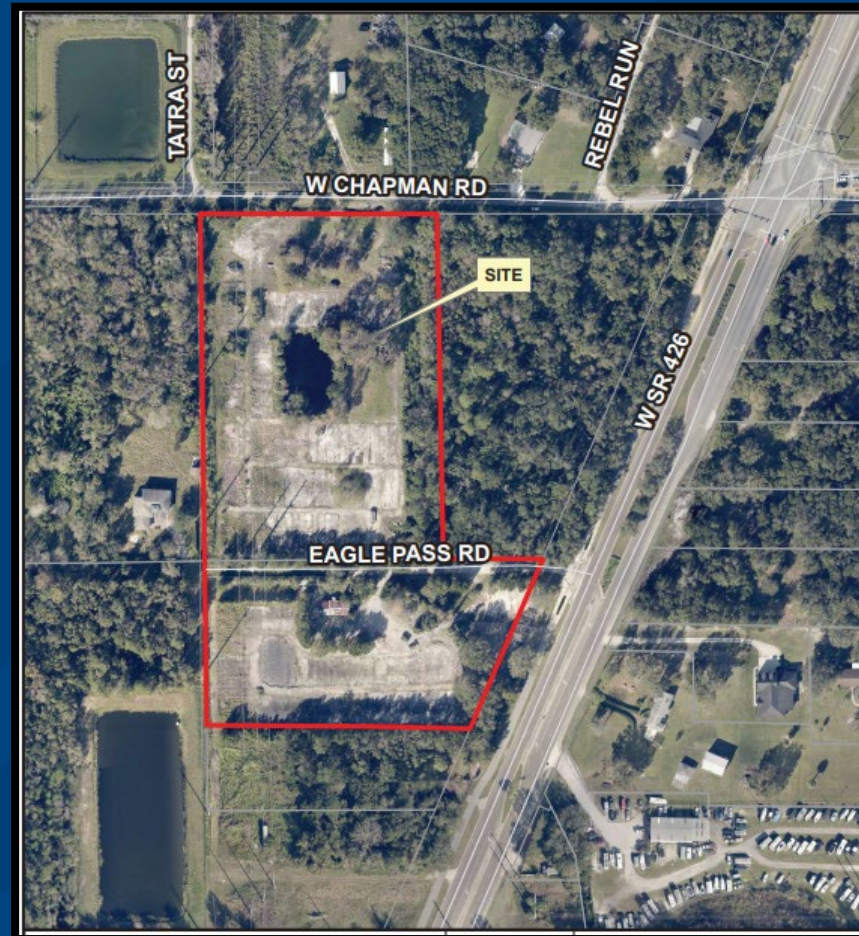
Request: *Continued from the January 14, 2025 Board of County Commissioners Meeting* - Consider a Rezone from A-1 (Agriculture) to C-3 (Heavy Commercial and Very Light Industrial) for a proposed office building and self-storage buildings on approximately 9.40 acres, located on the west side of State Road 426 at Eagle Pass Road.

EAGLE PASS REZONE

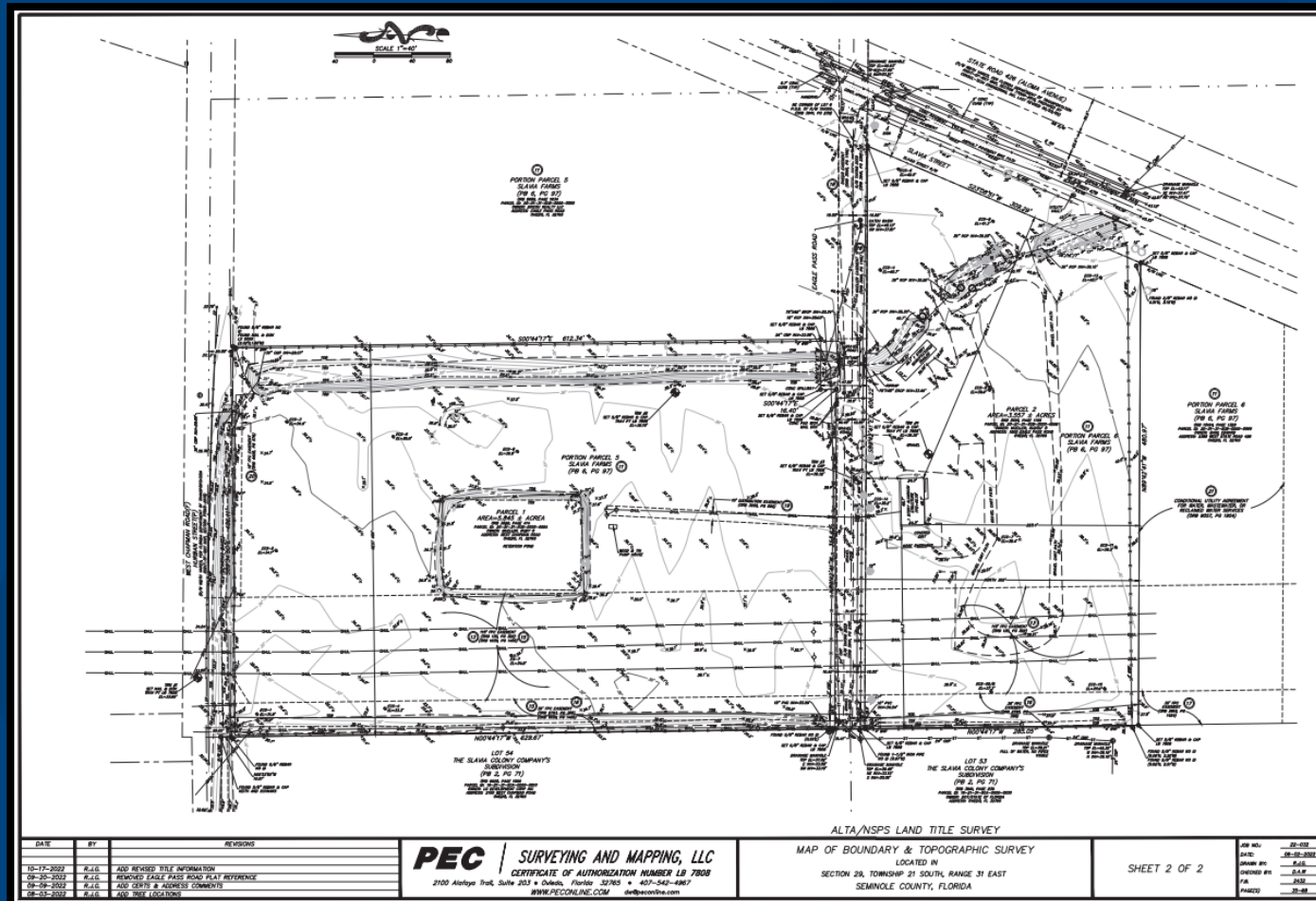


The request to Rezone to C-3 (Heavy Commercial and Very Light Industrial) is consistent with the Future Land Use of Industrial.

EAGLE PASS REZONE



EAGLE PASS REZONE



DATE	BY	REVISIONS
10-17-2023	R.A.S.	ADD REVISIONS
08-20-2023	R.A.S.	REVISED EASE PACE FOOT PRINT REFERENCE
08-09-2022	R.A.S.	ADD CHAIRS & ADDRESS COMMENTS
08-25-2021	R.A.S.	ADD TREE LOCATIONS

PEC SURVEYING AND MAPPING, LLC
 CERTIFICATE OF AUTHORIZATION NUMBER LB 7808
 2100 Alafaya Trail, Suite 203 • Orlando, Florida 32765 • 407-542-4967
 WWW.PECONLINE.COM info@peconline.com

ALTA/NPS LAND TITLE SURVEY
 MAP OF BOUNDARY & TOPOGRAPHIC SURVEY
 LOCATED IN
 SECTION 29, TOWNSHIP 21 SOUTH, RANGE 31 EAST
 SEMINOLE COUNTY, FLORIDA

SHEET 2 OF 2

JOB NO.	22-052
DATE	08-20-2023
DRAWN BY	R.A.S.
CHECKED BY	R.A.S.
FILE	22M
PROJECT	22-052

EAGLE PASS REZONE

In compliance with Seminole County Land Development Code Sec. 30.49 – Community Meeting Procedure, the Applicant conducted a community meeting on October 14, 2024

The Planning and Zoning Commission met on December 4, 2024, and voted unanimously to recommend the Board of County Commissioners adopt the Ordinance enacting a Rezone from A-1 (Agriculture) to C-3 (Heavy Commercial & Very Light Industrial) for approximately 9.40 acres, located on the west side of State Road 426 at Eagle Pass Road.

EAGLE PASS REZONE

On January 14, 2025, the Board of County Commissioners voted unanimously to continue the Eagle pass Rezone to the February 11, 2025, Board of County Commissioners meeting to allow Public Works Engineering to reach out to the County's consultants for the stormwater management study to determine if there are any issues with the drainage on the subject site.

EAGLE PASS REZONE

Requested Board Action:

Staff requests the Board of County Commissioners adopt an Ordinance rezoning approximately 9.40 acres, located on the west side of State Road 426 at Eagle Pass Road, from A-1 (Agriculture) to C-3 (Heavy Commercial & Very Light Industrial).