

List of Exhibits

A - Structures and Tents

B - Live/Outdoor Music/Amplified Sound

C - Restroom/Sanitation

D - Areas for Serving Food and Beverages

E - Parking Plan

F - Medical Facilities

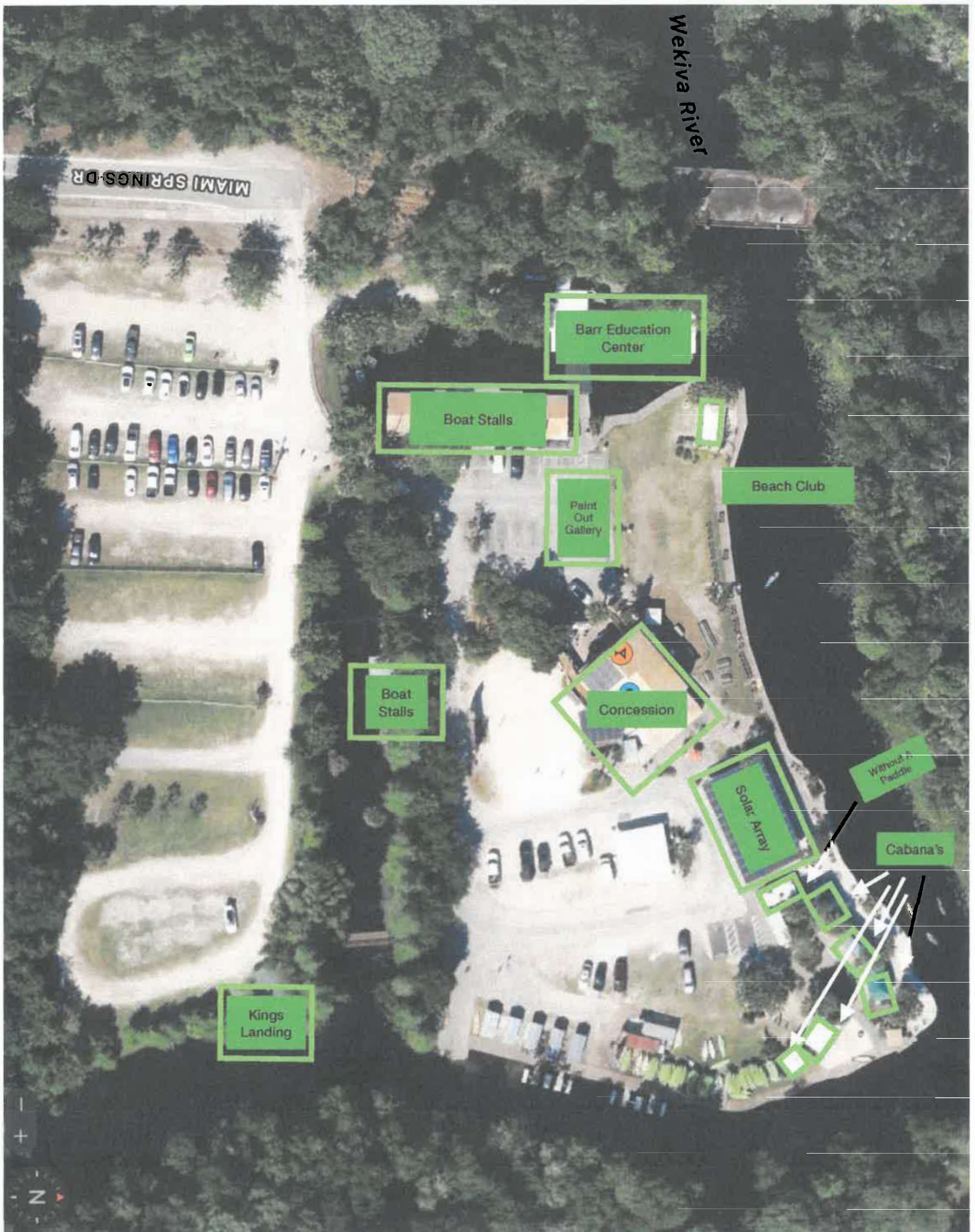
G - Ingress & Egress

H - Trash Receptacles/Recycle Bins

I - Pedestrian Plan

J - Certificate of Insurance

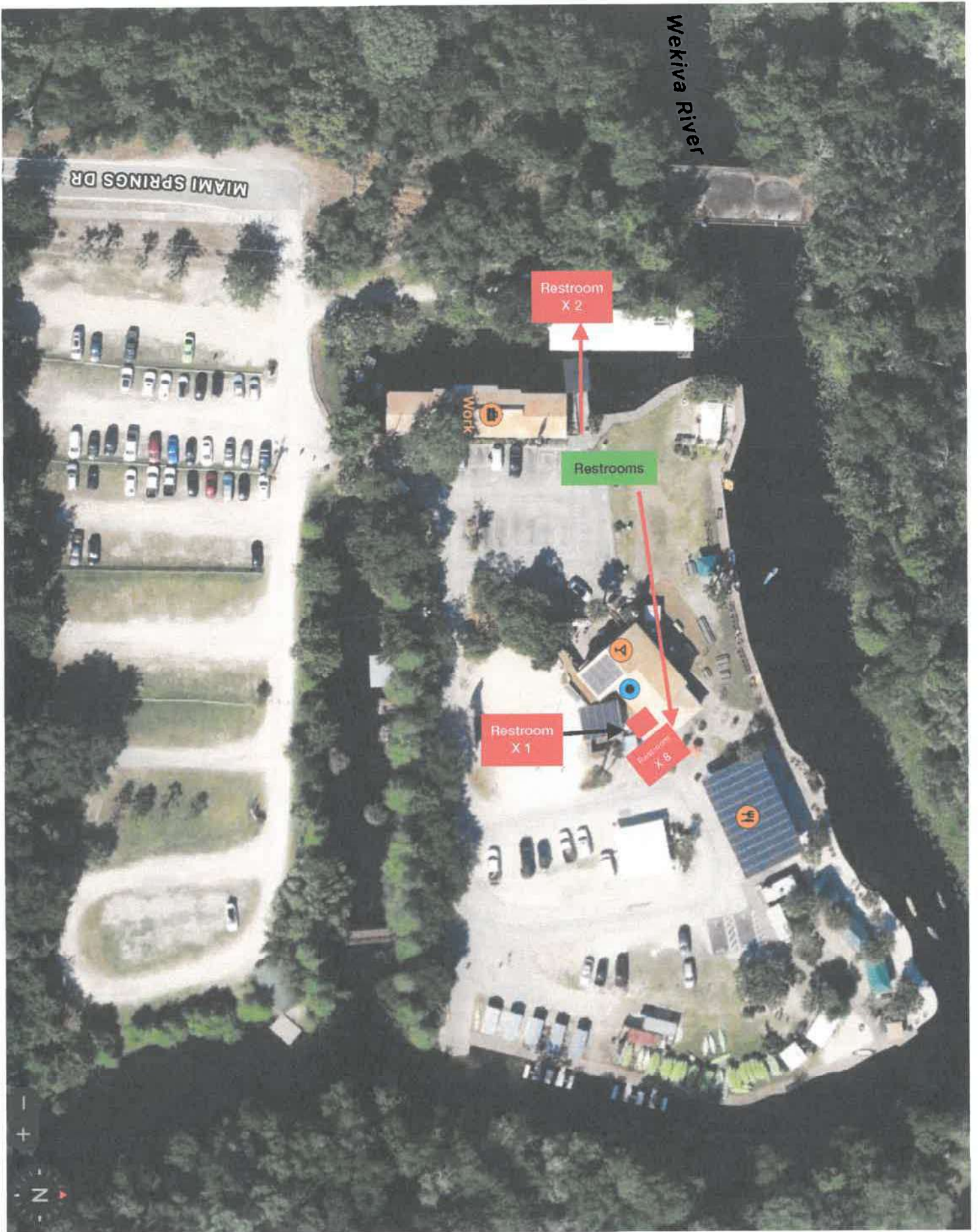
Structures & Tents



Live/Outdoor Music/ Amplified Sound



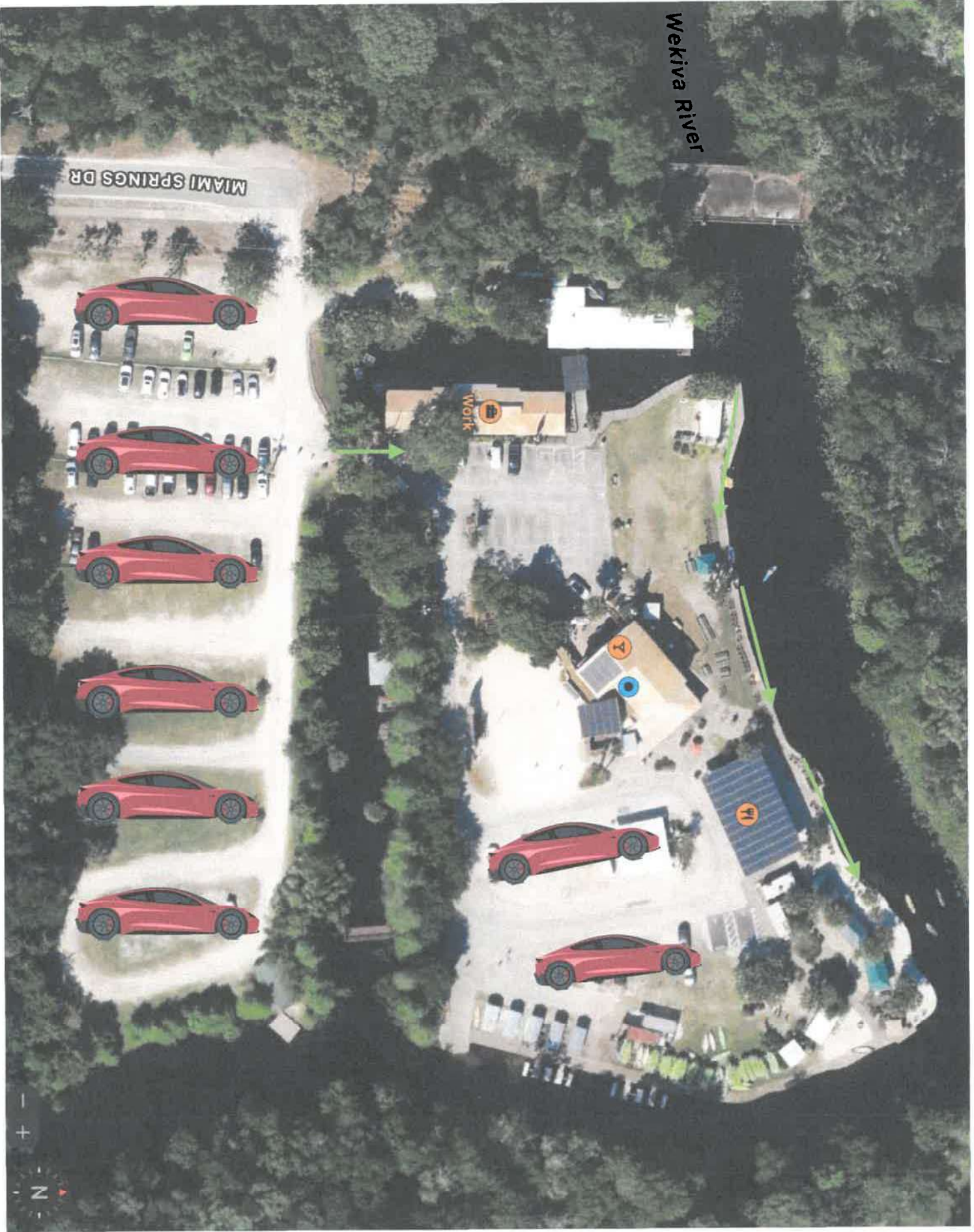
Restrooms/Sanitation



Areas for serving food & beverages



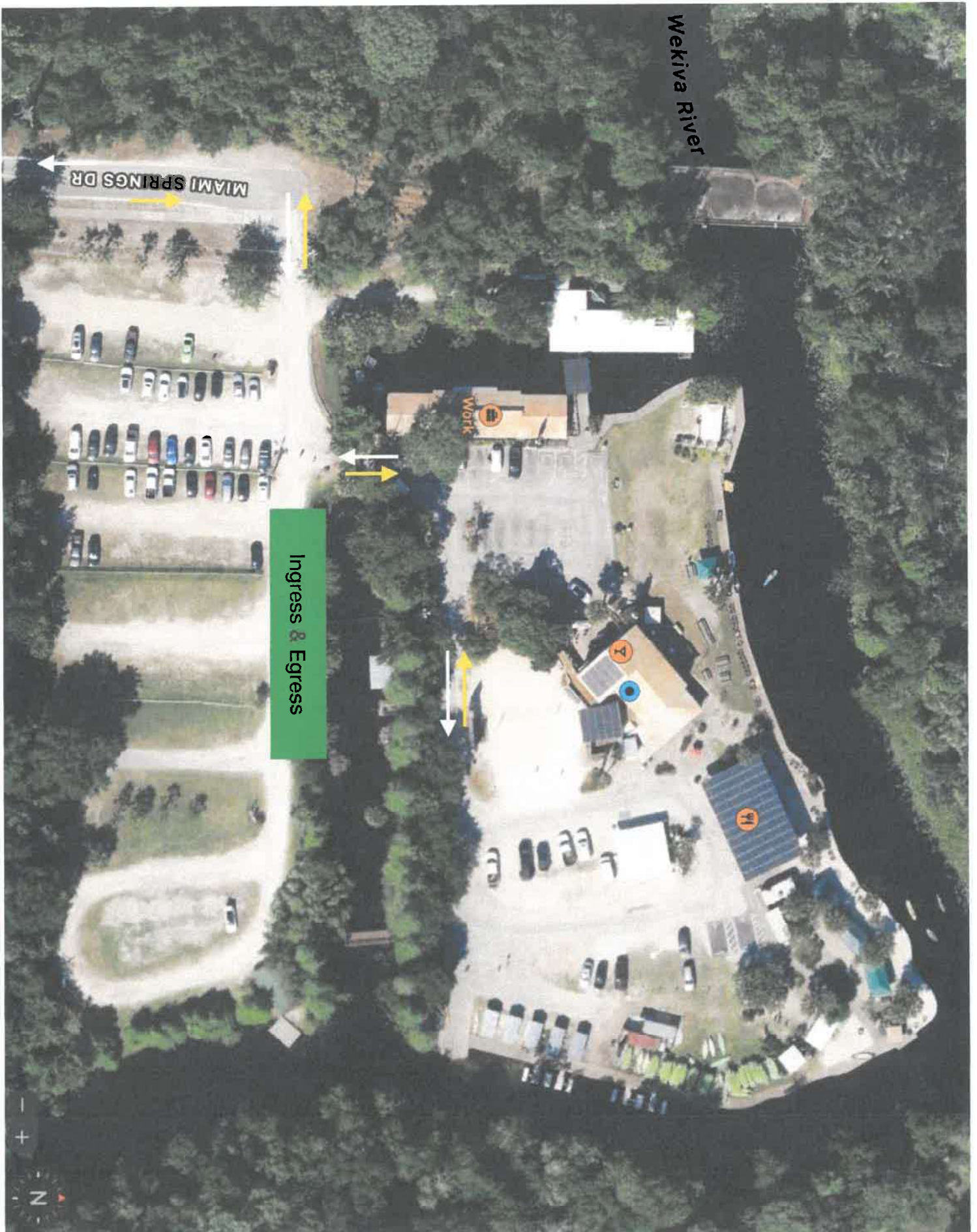
Parking Plan



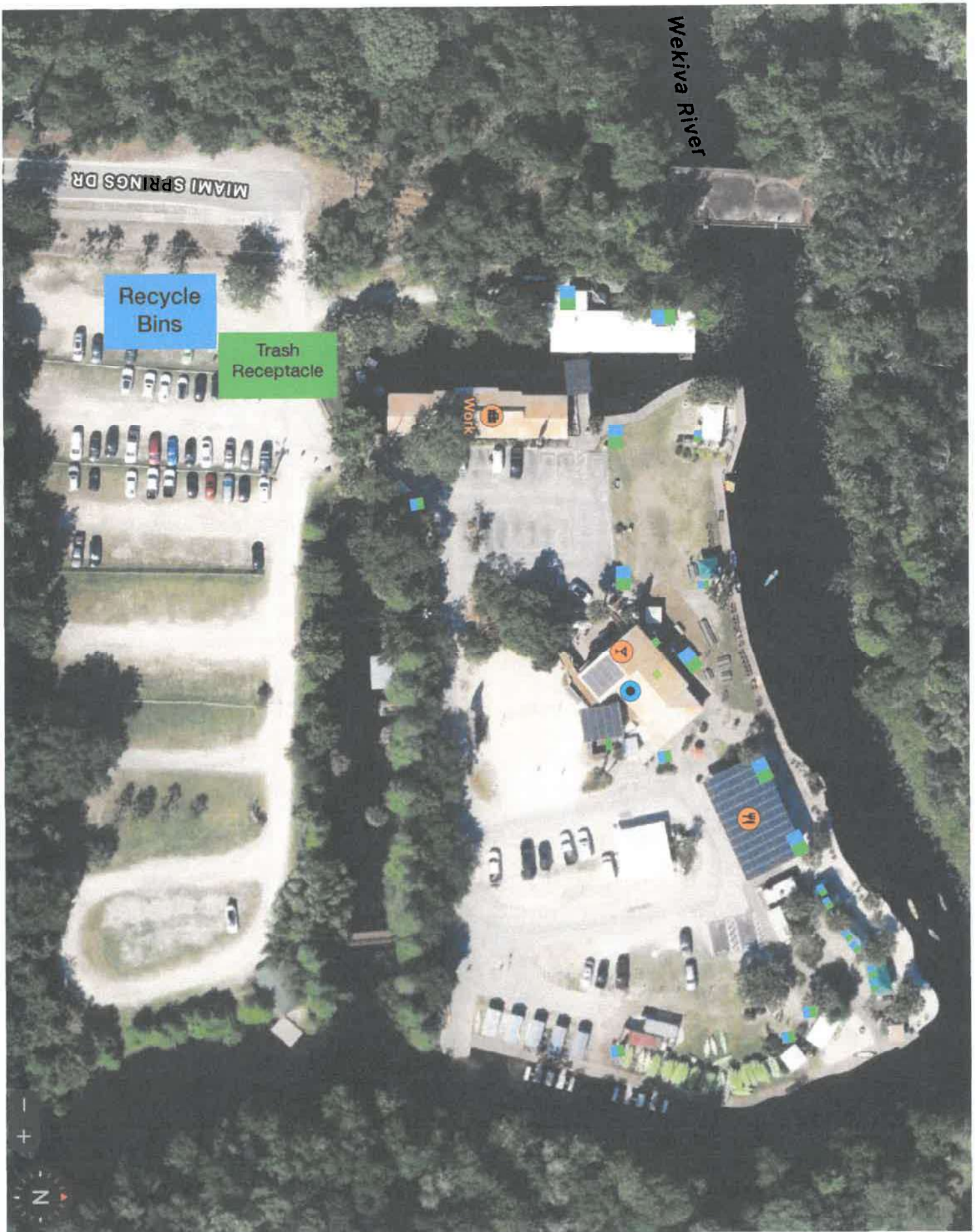
Medical Facility



Ingress & Egress



Trash Receptacles / Recycle Bins



Pedestrian Plan

