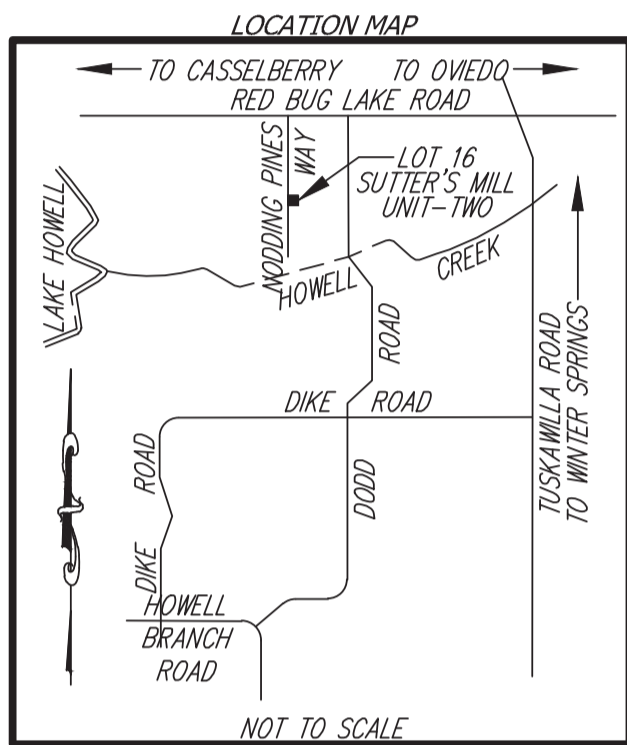
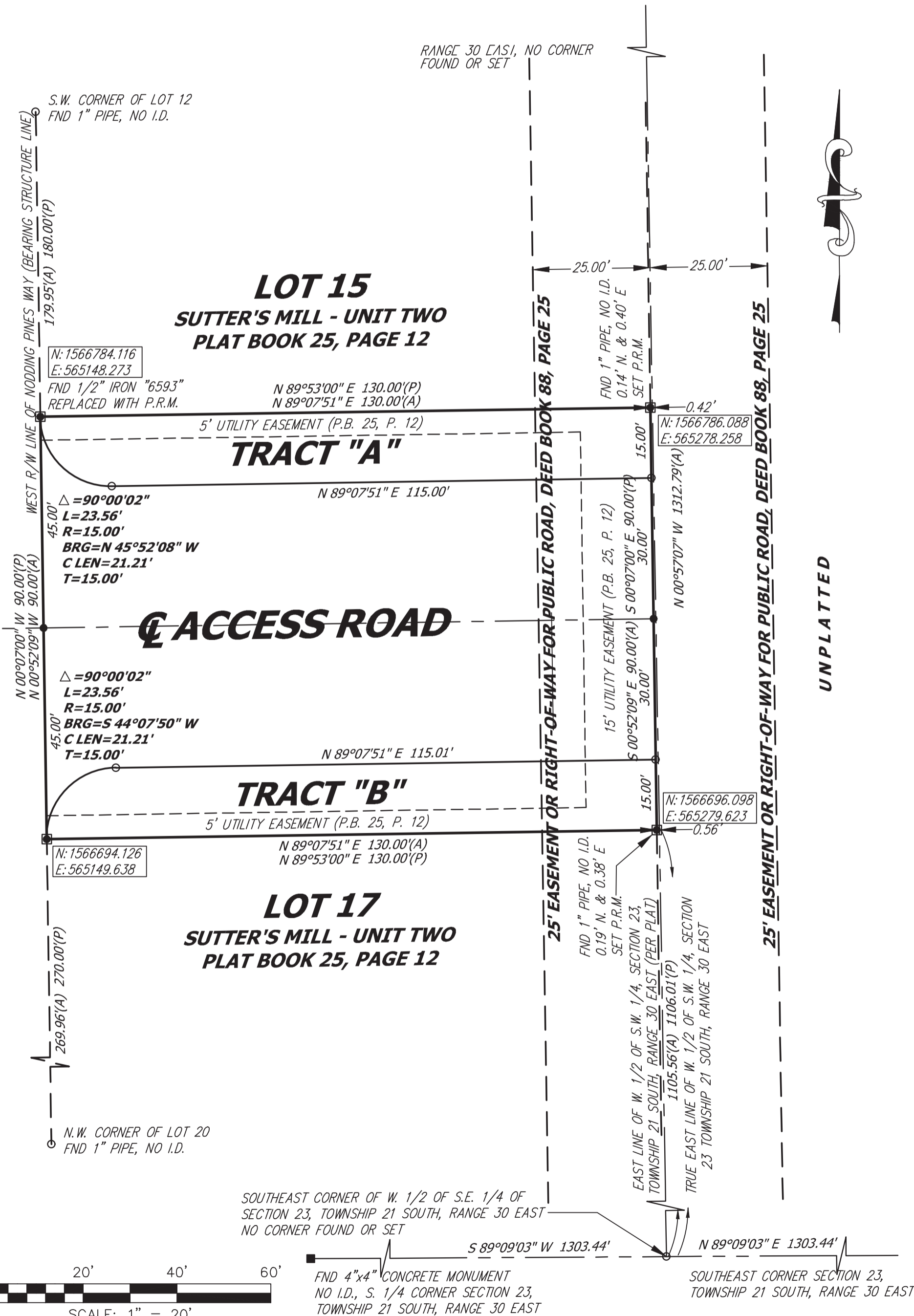


# PROPOSED ACCESS POINT FOR DEVELOPMENT



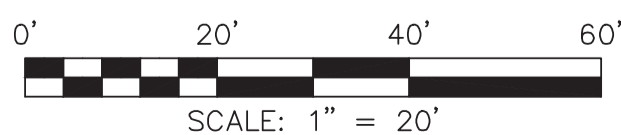
**NODDING PINES WAY 50' DEDICATED R/W**  
**(PLAT BOOK 25, PAGE 12)**



**ABBREVIATIONS LEGEND:**  
 (A).....ACTUAL MEASUREMENT  
 C.....CENTER LINE  
 D.B.....DEED BOOK  
 FND.....FOUND  
 I.D.....IDENTIFICATION  
 IRON.....IRON BAR SET OR FOUND AS NOTED  
 L.B.....CORPORATION LICENSE NUMBER  
 L.B.220.....CORPORATE REGISTRATION NUMBER OF  
 THE DOUDNEY COMPANIES, INC  
 NO.....NUMBER  
 O.R.B.....OFFICIAL RECORDS BOOK  
 P.....PAGE  
 (P).....PLATTED MEASUREMENT  
 P.B.....PLAT BOOK  
 P.L.S.....PROFESSIONAL LAND SURVEYOR  
 Pp.....PAGES  
 PSM.....PROFESSIONAL SURVEYOR AND MAPPER  
 R.L.S.....REGISTERED LAND SURVEYOR  
 R/W.....RIGHT-OF-WAY

**CURVE ELEMENTS**  
 Δ.....DELTA OR CENTRAL ANGLE OF A CURVE  
 R.....RADIUS LENGTH  
 L.....ARC LENGTH  
 C LEN.....CHORD LENGTH  
 BRG.....CHORD BEARING  
 T.....TANGENT

**THE DOUDNEY COMPANIES, INC.**  
**PROFESSIONAL SURVEYORS AND MAPPERS**  
**200 EAST COMMERCIAL STREET, SUITE 1**  
**SANFORD, FLORIDA 32771-3866**  
**PHONE: (407)322-1451**



"NOTICE: This plat, as recorded in its graphic form, is the official depiction of the subdivided lands described herein and will in no circumstances be supplanted in authority by any other graphic or digital form of the plat. There may be additional restrictions that are not recorded on this plat that may be found in the public records of this county."