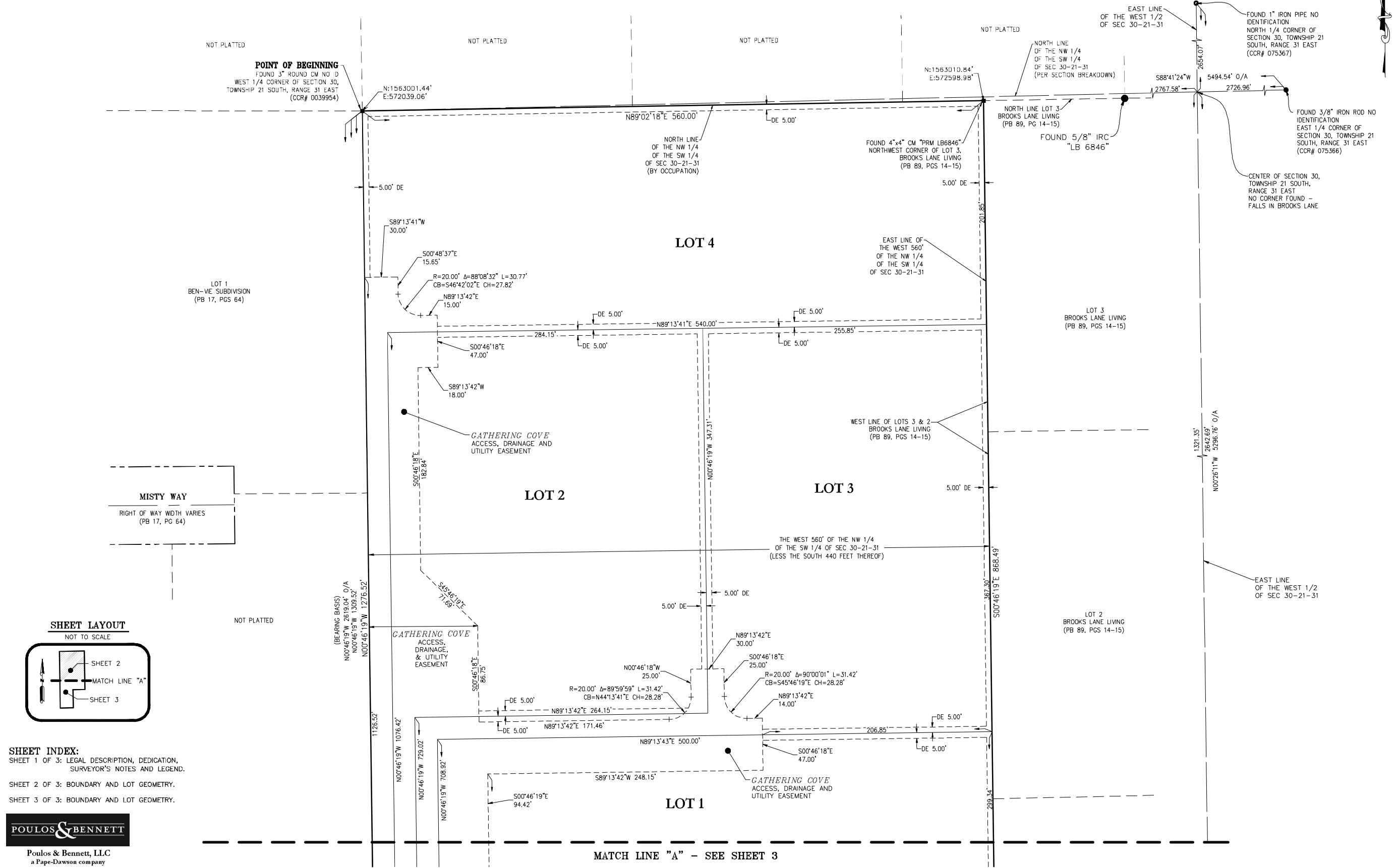
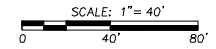


NOTICE: THIS PLAT, AS RECORDED IN ITS GRAPHIC FORM, IS THE OFFICIAL DEPICTION OF THE SUBDIVIDED LANDS DESCRIBED HEREIN AND WILL IN NO CIRCUMSTANCES BE SUPPLANTED IN AUTHORITY BY ANY OTHER GRAPHIC OR DIGITAL FORM OF THE PLAT. THERE MAY BE ADDITIONAL RESTRICTIONS THAT ARE NOT RECORDED ON THIS PLAT THAT MAY BE FOUND IN THE PUBLIC RECORDS OF THIS COUNTY.

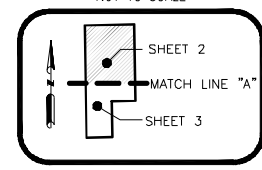
# BURCH

A PARCEL OF LAND SITUATED IN SECTION 30, TOWNSHIP 21 SOUTH, RANGE 31 EAST, SEMINOLE COUNTY, FLORIDA



### SHEET LAYOUT

NOT TO SCALE



**SHEET INDEX:**  
SHEET 1 OF 3: LEGAL DESCRIPTION, DEDICATION, SURVEYOR'S NOTES AND LEGEND.  
SHEET 2 OF 3: BOUNDARY AND LOT GEOMETRY.  
SHEET 3 OF 3: BOUNDARY AND LOT GEOMETRY.



**Poulos & Bennett, LLC**  
a Pape-Dawson company  
2602 E. Livingston Street, Orlando, Florida 32803  
7563 Phillips Highway, Suite 303, Jacksonville, Florida 32256  
Telephone 407 487 2594 www.poulosandbennett.com  
Surveying Business Number LB 8606

MATCH LINE "A" - SEE SHEET 3