

SKETCH OF DESCRIPTION

SECTION 19, TOWNSHIP 21 SOUTH, RANGE 29 EAST,
SEMINOLE COUNTY, FLORIDA

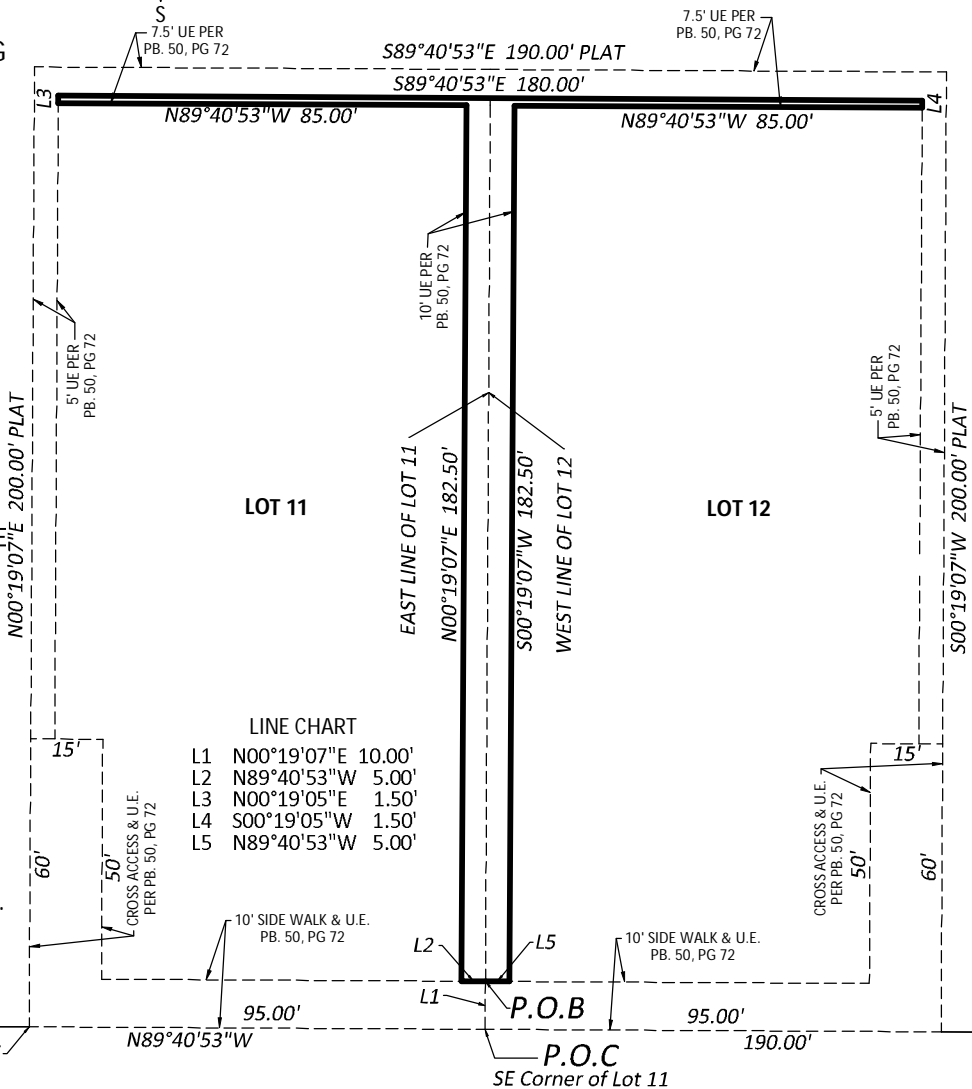
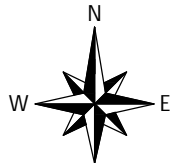
DESCRIPTION

COMMENCE AT THE
SOUTHEAST CORNER OF LOT
11, ORANGE BLOSSOM
BUSINESS CENTER, ACCORDING
TO THE PLAT THEREOF AS
RECORDED IN PLAT BOOK 50,
PAGE 72, OF THE PUBLIC
RECORDS OF SEMINOLE
COUNTY, FLORIDA, THENCE
N00°19'07"E A DISTANCE OF
10.00 FEET FOR A POINT OF
BEGINNING; THENCE
N89°40'53"W A DISTANCE OF
5.00 FEET; THENCE
N00°19'07"E A DISTANCE OF
182.50 FEET; THENCE
N89°40'53"W A DISTANCE OF
85.00 FEET; THENCE
N00°19'07"E A DISTANCE OF
1.50 FEET; THENCE S89°40'53"E
A DISTANCE OF 180.00 FEET;
S00°19'07"W A DISTANCE OF
1.50 FEET; THENCE
N89°40'53"W A DISTANCE OF
85.00 FEET; THENCE
S00°19'07"W A DISTANCE OF
182.50 FEET; THENCE
N89°40'53"W A DISTANCE OF
5.00 FEET TO THE POINT OF
BEGINNING.

CONTAINS 2095 SQUARE FEET.

(ADDRESS) - 2710 PEMBERTON DRIVE, APOPKA, FL 32703

(PARCEL NUMBER) - 19-21-29-516-0000-0080



LINE CHART	
L1	N00°19'07"E 10.00'
L2	N89°40'53"W 5.00'
L3	N00°19'05"E 1.50'
L4	S00°19'05"W 1.50'
L5	N89°40'53"W 5.00'

JOB #59594
CF# SC50-72 LOT 11 & 12 ESMT VAC
DATE: 6-10-2025
SCALE: 1" = 40'
DRAWN BY: RFR

PREPARED FOR: Reeco Properties LLLP
BEARING STRUCTURE IS ASSUMED AND BASED ON THE N.R/W LINE
BEING: N89°40'53"W.

REVISIONS:
7-16-25 ADDED 1.5' TO ESMT VAC



Digitally signed by
Frank A Raymond III
Date: 2025.07.16
03:52:27 -04'00'

FRANK A. RAYMOND, III, PSM 5325
"THE DATE OF SIGNATURE DOES NOT REVISE OR SUPERSEDE
THE SURVEY DATE OR REVISION DATE."

"NOT VALID WITHOUT THE ORIGINAL SIGNATURE AND SEAL
OF THIS FLORIDA LICENSED SURVEYOR AND MAPPER." OR
THE ELECTRONIC SEAL APPEARING ON THIS DOCUMENT
WAS AUTHORIZED BY FRANK A. RAYMOND, III, PSM 5325.



ACCURIGHT SURVEYS
OF ORLANDO INC., LB 4475
2012 E. Robinson Street Orlando, Florida 32803
www.AccurightSurveys.net
Admin@AccurightSurveys.net
PHONE: (407) 894-6314

LEGEND	
PG	- PAGE
POB	- POINT OF BEGINNING
POC	- POINT OF COMMENCEMENT
PRC	- POINT OF REVERSE CURVATURE
PT	- POINT OF TANGENCY
R/W	- RIGHT OF WAY
R	- RADIUS
TYP	- TYPICAL
UE	- UTILITY EASEMENT