

6.11.2008 P.M.
122.00'(M)
N 42°08'37" W
N 42°08'37" W 122.78'(M)

P.L.B. # 20-10-20-000-0000

N 89°58'14" E 180.86'(M)
EAST 180.75'(D)

N 89°48'24" E 180.83'(M)
EAST 180.75'(D)

(P.P.M.)
7/8" 1" IRON PIPE
NO NUMBER

7/8" 1/2" IRON PIPE
NO NUMBER

N 00°03'23" E 345.82'(M)
N 00°05'25" E 348.50'(D)

SOUTH 348.50'(D)
S 00°02'15" E 345.91'(M)

P.L.B. # 20-10-20-000-0000

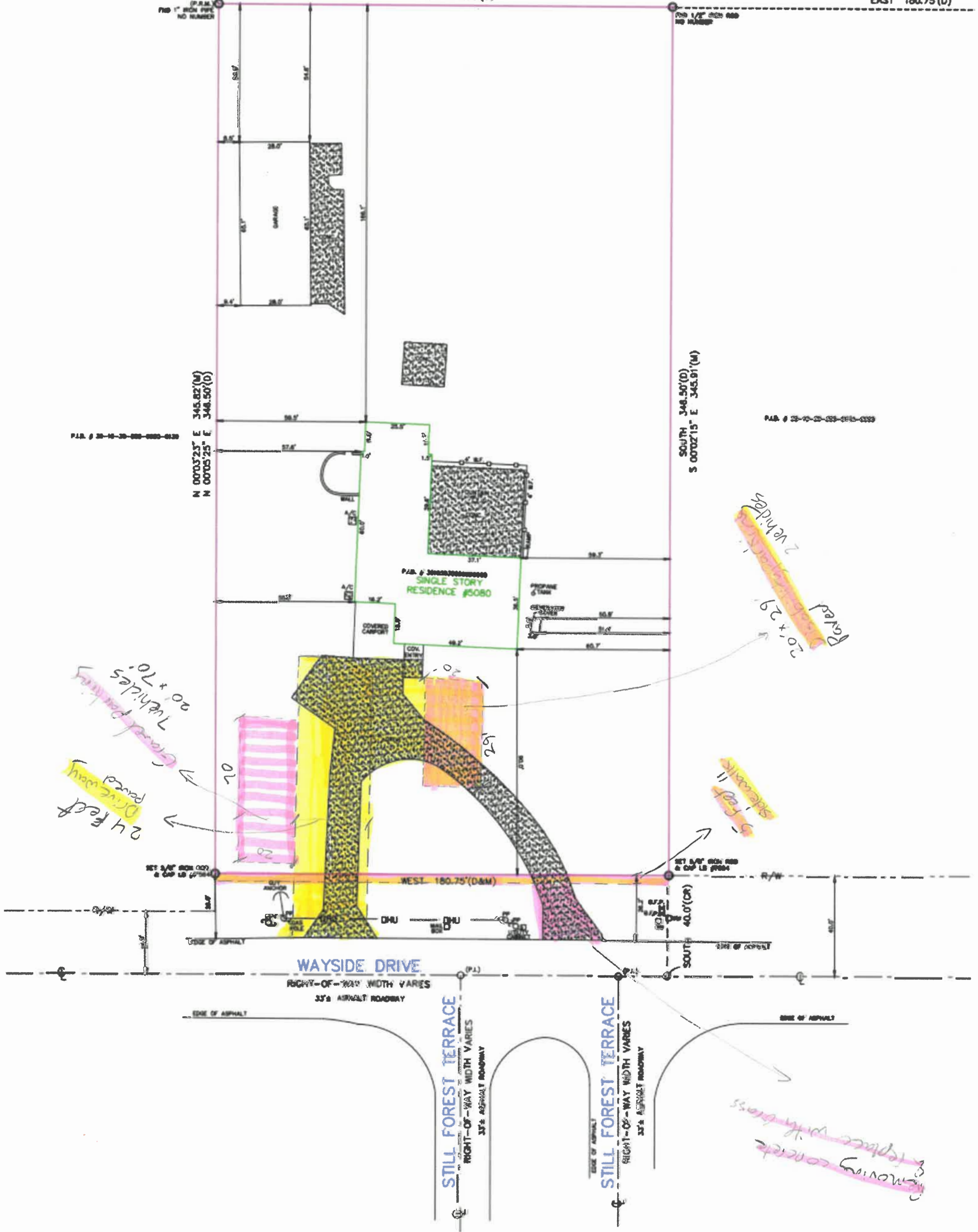
P.L.B. # 20-10-20-000-0000
SINGLE STORY
RESIDENCE #5080

24 Feet Paved Drive way
20 x 70' Gravel parking for 7 vehicles

20 x 29 Paved 2 Vehicles

5 Feet sidewalk

Removing concrete & replace with grass



WAYSIDE DRIVE
RIGHT-OF-WAY WIDTH VARIES
33' ASPHALT ROADWAY

STILL FOREST TERRACE
RIGHT-OF-WAY WIDTH VARIES
33' ASPHALT ROADWAY

STILL FOREST TERRACE
RIGHT-OF-WAY WIDTH VARIES
33' ASPHALT ROADWAY

EDGE OF ASPHALT

EDGE OF ASPHALT

EDGE OF ASPHALT

EDGE OF ASPHALT

EDGE OF ASPHALT

EDGE OF ASPHALT

EDGE OF ASPHALT

EDGE OF ASPHALT

EDGE OF ASPHALT

EDGE OF ASPHALT

EDGE OF ASPHALT

EDGE OF ASPHALT

EDGE OF ASPHALT

EDGE OF ASPHALT

EDGE OF ASPHALT

EDGE OF ASPHALT

EDGE OF ASPHALT

EDGE OF ASPHALT

EDGE OF ASPHALT

EDGE OF ASPHALT

EDGE OF ASPHALT

EDGE OF ASPHALT

EDGE OF ASPHALT

EDGE OF ASPHALT

EDGE OF ASPHALT

EDGE OF ASPHALT

EDGE OF ASPHALT

EDGE OF ASPHALT

EDGE OF ASPHALT

EDGE OF ASPHALT

EDGE OF ASPHALT

EDGE OF ASPHALT

EDGE OF ASPHALT

EDGE OF ASPHALT

EDGE OF ASPHALT

EDGE OF ASPHALT

EDGE OF ASPHALT

EDGE OF ASPHALT

EDGE OF ASPHALT

EDGE OF ASPHALT

EDGE OF ASPHALT

EDGE OF ASPHALT

EDGE OF ASPHALT

EDGE OF ASPHALT

EDGE OF ASPHALT

EDGE OF ASPHALT

EDGE OF ASPHALT

EDGE OF ASPHALT

EDGE OF ASPHALT

EDGE OF ASPHALT

EDGE OF ASPHALT

EDGE OF ASPHALT

EDGE OF ASPHALT

EDGE OF ASPHALT

EDGE OF ASPHALT

EDGE OF ASPHALT

EDGE OF ASPHALT

EDGE OF ASPHALT

EDGE OF ASPHALT

EDGE OF ASPHALT

EDGE OF ASPHALT

EDGE OF ASPHALT

EDGE OF ASPHALT

EDGE OF ASPHALT

EDGE OF ASPHALT

EDGE OF ASPHALT

EDGE OF ASPHALT

EDGE OF ASPHALT

EDGE OF ASPHALT

EDGE OF ASPHALT

EDGE OF ASPHALT

EDGE OF ASPHALT

EDGE OF ASPHALT

EDGE OF ASPHALT

EDGE OF ASPHALT

EDGE OF ASPHALT

EDGE OF ASPHALT

EDGE OF ASPHALT