

DEVELOPMENT SERVICES PUBLIC HEARING ITEMS

Board of County Commissioners Meeting
June 11, 2024

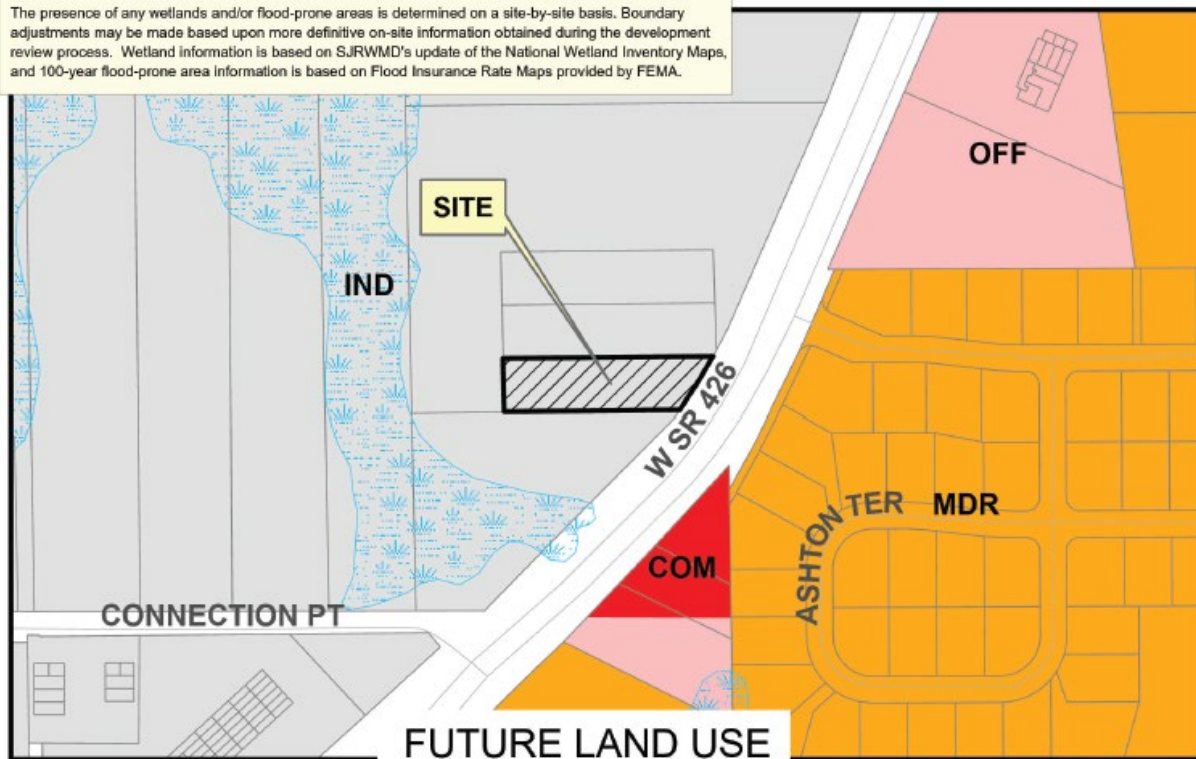
RIVAS COMMERCIAL REZONE

Applicant: PMJS Development Solutions

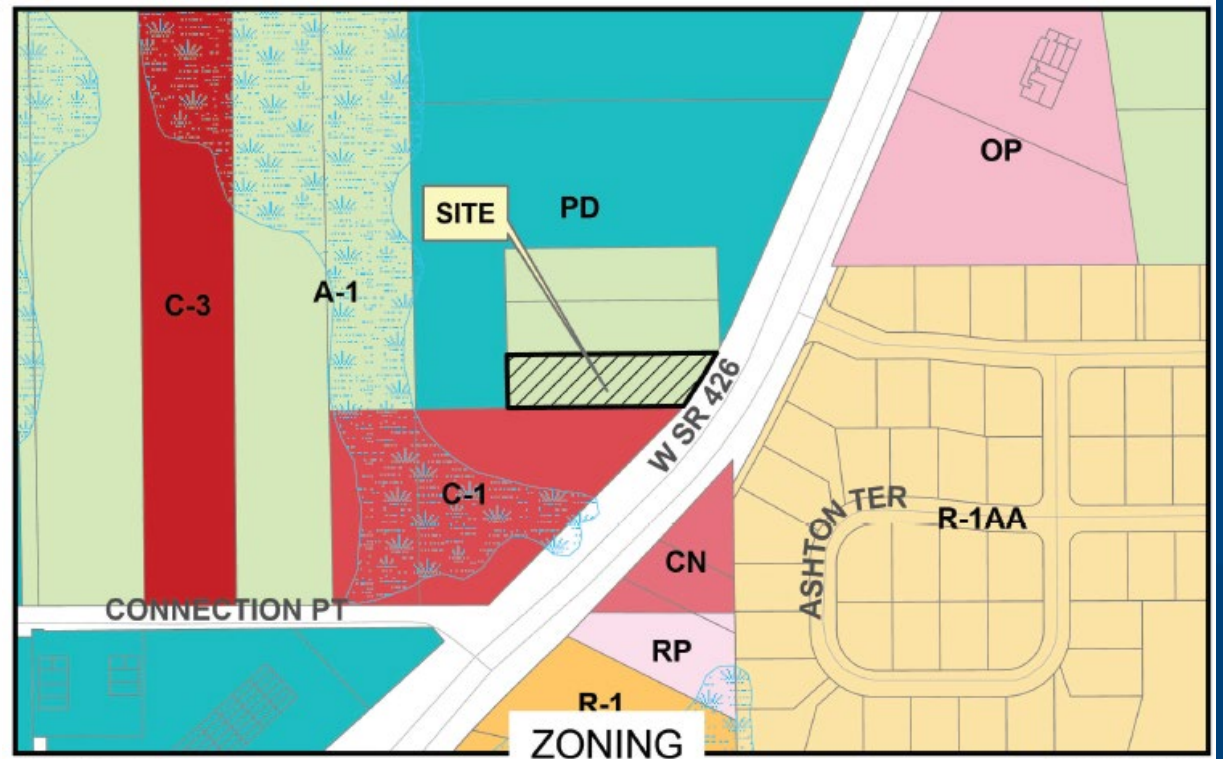
Request: Consider a Rezone from A-1 (Agriculture) to C-3 (General Commercial & Wholesale) on approximately 0.78 acres, located on the west side of W S.R. 426, approximately 500 feet north of Connection Point.

RIVAS COMMERCIAL REZONE

The presence of any wetlands and/or flood-prone areas is determined on a site-by-site basis. Boundary adjustments may be made based upon more definitive on-site information obtained during the development review process. Wetland information is based on SJRWMD's update of the National Wetland Inventory Maps, and 100-year flood-prone area information is based on Flood Insurance Rate Maps provided by FEMA.



Site
 CONS
 COM
 IND
 MDR
 OFF



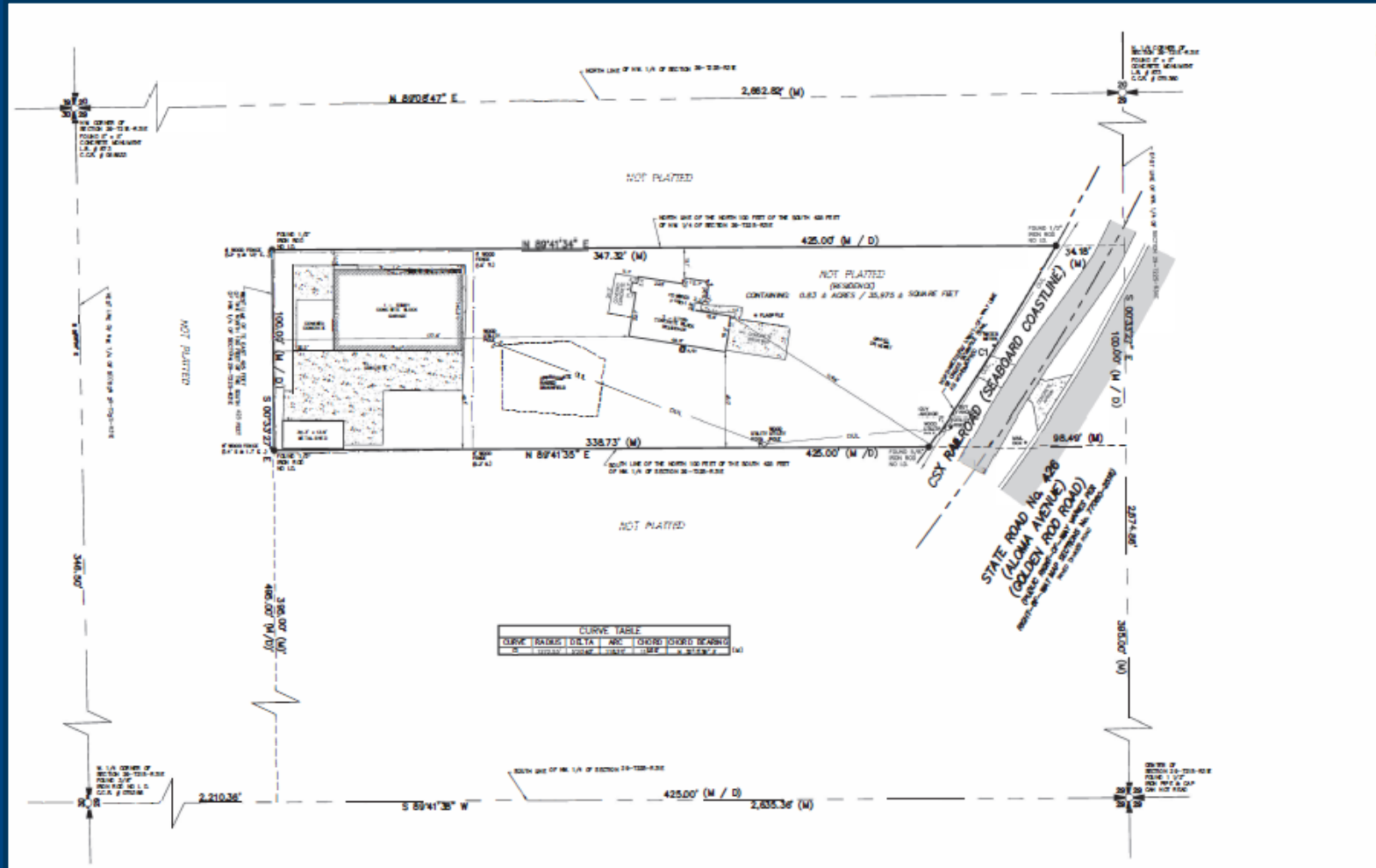
Date: 4/18/2024
 Site
 A-1
 R-1
 OP
 C-1
 PD
 CONS
 R-1AA
 RP
 CN
 C-3

Name Z2024-002

RIVAS COMMERCIAL REZONE



RIVAS COMMERCIAL REZONE



RIVAS COMMERCIAL REZONE

Requested Board Action:

- Adopt the Ordinance enacting a Rezone from Rezone from A-1 (Agriculture) to C-3 (General Commercial & Wholesale) on approximately 0.78 acres, located on the west side of W S.R. 426, approximately 500 feet north of Connection Point.