

ALTA/NSPS LAND TITLE SURVEY

TREE IDENTIFICATION IS PER HORTICULTURAL ASPECTS' ARBORIST REPORT PREPARED BY JUSTIN ROGERS, DATED DECEMBER 2, 2025

GENERAL SURVEY NOTES:

- BEARING STRUCTURE IS ASSUMED AND BASED ON THE MONUMENTED WEST R/W LINE OF HENDERSON LANE, BEING 500°12'23"E PER PB 68 PG 29.
- THIS SURVEY REFLECTS ONLY MATTERS OF RECORD AS PROVIDED BY THE CLIENT OR CLIENTS REPRESENTATIVE.
- THIS SURVEY WAS MADE ON THE GROUND. THE UNDERGROUND UTILITIES SHOWN HAVE BEEN LOCATED FROM FIELD SURVEY INFORMATION (MCKIM & CREED) AND EXISTING DRAWINGS. THE SURVEYOR MAKES NO GUARANTEE THAT THE UNDERGROUND UTILITIES SHOWN COMPRISE ALL SUCH UTILITIES IN THE AREA, EITHER IN SERVICE OR ABANDONED. THE SURVEYOR FURTHER DOES NOT WARRANT THAT THE UNDERGROUND UTILITIES SHOWN ARE IN THE EXACT LOCATION INDICATED ALTHOUGH HE DOES CERTIFY THAT THEY ARE LOCATED AS ACCURATELY AS POSSIBLE FROM INFORMATION AVAILABLE. THE SURVEYOR HAS NOT PHYSICALLY LOCATED THE UNDERGROUND UTILITIES. ENGINEER AND CONTRACTOR SHALL VERIFY MEASUREMENTS OF CONNECTIONS TO EXISTING UTILITIES BEFORE ORDERING MATERIALS AND BEFORE COMMENCEMENT OF CONSTRUCTION. IF THERE IS A DISCREPANCY BETWEEN THE MEASUREMENTS SHOWN HEREON AND THE VERIFYING MEASUREMENTS, THIS SURVEYOR SHALL BE CONTACTED IMMEDIATELY TO FURTHER VERIFY THE DISCREPANCY.
- THIS SITE LIES IN ZONE "X", BASED ON FLOOD INSURANCE RATE MAP NO. 12117C0055F AND 12117C0065F, COMMUNITY NO. 120289, UNINCORPORATED SEMINOLE COUNTY, FLORIDA, HAVING AN EFFECTIVE DATE OF 9/28/2007.

- ACCORDING TO FLORIDA STATUTES, CHAPTER 472.025, A LAND SURVEYOR SHALL NOT AFFIX HIS SEAL OR NAME TO ANY PLAN OR DRAWING WHICH DEPICTS WORK WHICH HE IS NOT LICENSED TO PERFORM OR WHICH IS BEYOND HIS PROFESSION OR SPECIALTY THEREIN. THEREFORE, WE ARE UNABLE TO CERTIFY AS TO MUNICIPAL ZONING COMPLIANCE, INTERPRETATION OF ZONING CODES OR THE DETERMINATION OF VIOLATIONS THEREOF.
- THIS SURVEY MADE WITH BENEFIT OF COMMITMENT FOR TITLE NO. NCS-1276895-ORL, EFFECTIVE: SEPTEMBER 03, 2025, ISSUED BY FIRST AMERICAN TITLE INSURANCE COMPANY. THE PROPERTY DESCRIBED HEREON IS THE SAME AS THE PROPERTY DESCRIBED IN SCHEDULE A OF THE TITLE COMMITMENT.

- THIS "BOUNDARY AND TOPOGRAPHIC SURVEY" WAS MADE IN ACCORDANCE WITH LAWS AND/OR STANDARDS OF PRACTICE FOR THE STATE OF FLORIDA.

- THIS SURVEY IS VALID ONLY TO THE PARTIES TO WHOM IT IS CERTIFIED AND IS NON-TRANSFERABLE.

- THE PROPERTY IS CONTIGUOUS WITH HENDERSON LANE AND STATE ROAD 46, BOTH PAVED PUBLIC RIGHTS-OF-WAY.

- OBSERVABLE SURFACE EVIDENCE OF UTILITIES SERVING THE PROPERTY AND STORM DRAINAGE FACILITIES ARE SHOWN HEREON.

- ALL PARCELS AND/OR LOTS SHOWN HEREON ARE CONTIGUOUS BETWEEN SAID PARCELS AND/OR LOTS AND DO NOT CREATE ANY GAPS, GORES OR HIATUSSES.

- NO SURFACE EVIDENCE OF SITE USE AS A CEMETERY WAS OBSERVED.

- ELEVATIONS ARE BASED ON BENCHMARK DESIGNATION 8012001, BEING: 33.457 FEET, (NAVD 1988), PUBLISHED BY SEMINOLE COUNTY.

- THE MAPPED FEATURES SHOWN HEREON ARE RELATIVE TO FLORIDA STATE PLANE COORDINATE SYSTEM EAST ZONE, NAD(83)-(2011)-(EPOCH 2010.0000), ESTABLISHED PER FDOT FPRN. THE COORDINATE SYSTEM AND DISPLAYED UNITS ARE IN U.S. SURVEY FEET.

- NOTES PERTAINING TO TABLE A ITEMS OF ALTA/NSPS LAND TITLE SURVEY STANDARDS:

- ITEM 16: NO EVIDENCE OF RECENT EARTH MOVING WORK, BUILDING CONSTRUCTION OR BUILDING ADDITIONS WAS OBSERVED IN THE PROCESS OF CONDUCTING THE FIELDWORK.

- ITEM 17: NO EVIDENCE OF RECENT STREET OR SIDEWALK CONSTRUCTION OR REPAIRS WAS OBSERVED IN THE PROCESS OF CONDUCTING THE FIELDWORK. SURVEYOR IS NOT AWARE OF PROPOSED CHANGES IN STREET RIGHT OF WAY LINES.

- ITEM 18: SURVEYOR HAS NOT BEEN PROVIDED ANY DOCUMENTATION OF PLOTTABLE OFFSITE EASEMENTS.

SIGNIFICANT OBSERVATIONS:

WITHOUT EXPRESSING A LEGAL OPINION AS TO OWNERSHIP OR NATURE, THE FOLLOWING SIGNIFICANT OBSERVATIONS ARE NOTED. ADDITIONAL ITEMS MAY BE DEPICTED HEREON THAT HAVE NOT BEEN INCLUDED IN THIS LIST:

NONE APPARENT

ZONING INFORMATION:

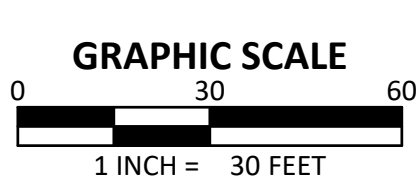
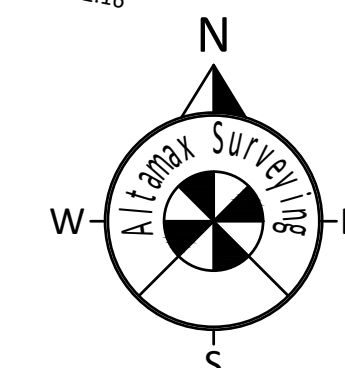
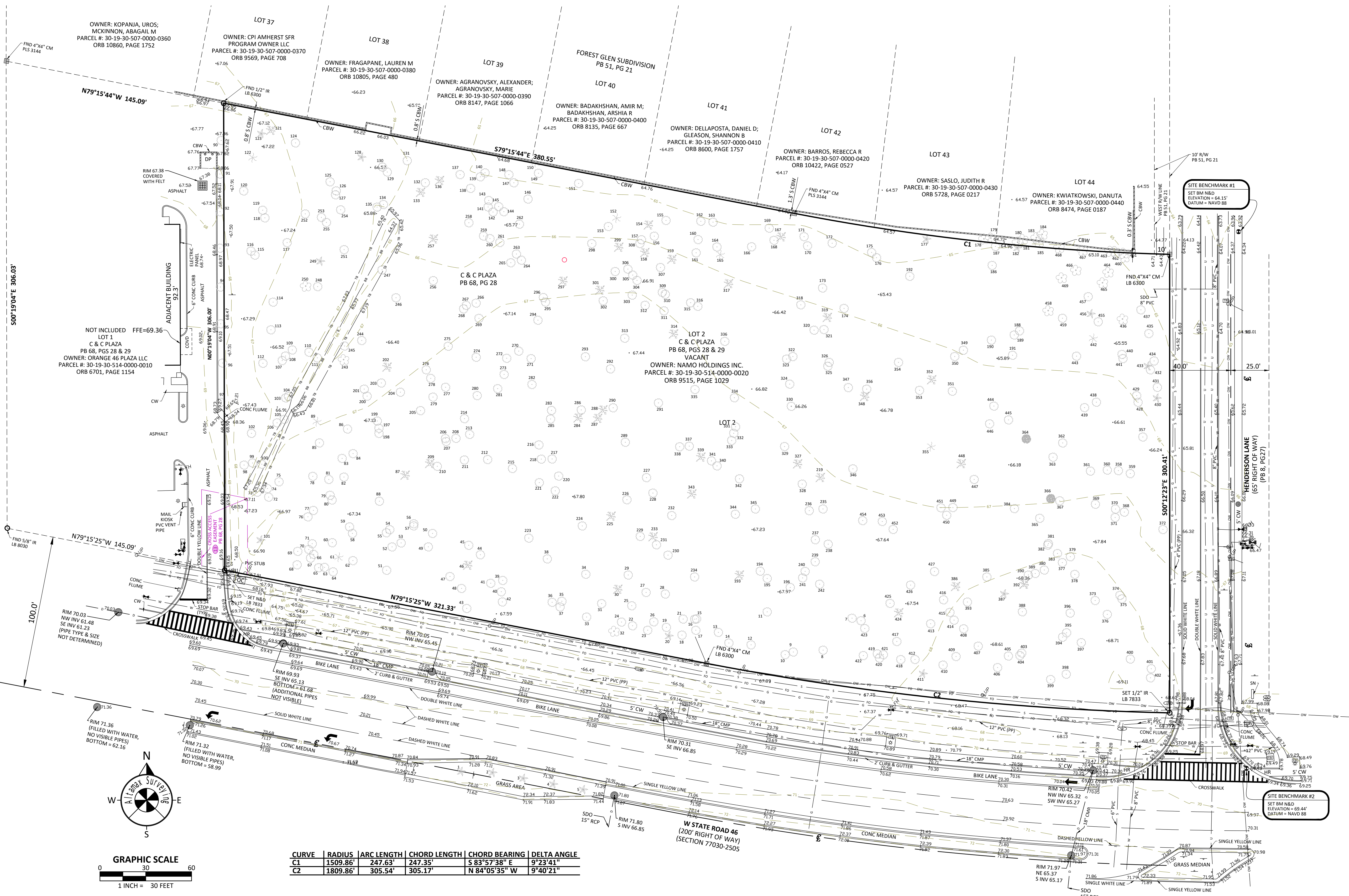
*NO ZONING INFORMATION WAS PROVIDED AT THE TIME OF SURVEY.

Altamax Surveying
910 Belle Avenue, Suite 1100
Casselberry, FL 32708
Phone: 407-677-0200
Licensed Business No. 7833
www.altamaxsurveying.com
james@altamaxsurveying.com



Tree ID#	DBH Size	Tree Type	Tree ID#	DBH Size	Tree Type	Tree ID#	DBH Size	Tree Type	Tree ID#	DBH Size	Tree Type	Tree ID#	DBH Size	Tree Type
1	16"	BISMARCK PALM	101	18"	CABBAGE PALM	201	13"	SLASH PINE	401	21"	LAUREL OAK	291	6"	LAUREL OAK
2	15"	BISMARCK PALM	102	6"	LIVE OAK	202	17"	SLASH PINE	402	9"	LAUREL OAK	292	20"	SLASH PINE
3	14"	BISMARCK PALM	103	11"	LAUREL OAK	203	10"	LAUREL OAK	403	16"	LAUREL OAK	293	10"	LAUREL OAK
4	16"	BISMARCK PALM	104	12"	LIVE OAK	204	11"	LAUREL OAK	404	13"	LAUREL OAK	294	13"	LAUREL OAK
5	15"	BISMARCK PALM	105	13"	LIVE OAK	205	8"	LAUREL OAK	405	9"	LAUREL OAK	295	5"	LAUREL OAK
6	11"	LAUREL OAK	106	8"	LIVE OAK	206	6"	LAUREL OAK	406	8"	LAUREL OAK	296	7"	LAUREL OAK
7	6"	LAUREL OAK	107	16"	LIVE OAK	207	12"	LAUREL OAK	407	19"	LIVE OAK	297	16"	SLASH PINE
8	19"	LAUREL OAK	108	32"	LIVE OAK	208	6"	LAUREL OAK	408	12"	LAUREL OAK	298	15"	CABBAGE PALM
9	10"	LIVE OAK	109	8"	LAUREL OAK	209	12"	SLASH PINE	409	8"	LAUREL OAK	299	8"	LAUREL OAK
10	10"	LIVE OAK	110	11"	LIVE OAK	210	13"	LAUREL OAK	410	14"	LAUREL OAK	300	10"	LAUREL OAK
11	18"	LAUREL OAK	111	11"	LAUREL OAK	211	9"	LAUREL OAK	411	18"	CABBAGE PALM	301	12"	SLASH PINE
12	6"	LAUREL OAK	112	9"	LAUREL OAK	212	12"	LAUREL OAK	412	13"	LAUREL OAK	302	6"	LAUREL OAK
13	15"	LIVE OAK	113	23"	LIVE OAK	213	10"	LAUREL OAK	413	15"	LAUREL OAK	303	8"	LAUREL OAK
14	10"	LIVE OAK	114	11"	LAUREL OAK	214	9"	LAUREL OAK	414	6"	WATER OAK	304	7"	LIVE OAK
15	7"	LAUREL OAK	115	15"	LAUREL OAK	215	7"	LAUREL OAK	415	9"	LAUREL OAK	305	6"	LIVE OAK
16	8"	LAUREL OAK	116	6"	LAUREL OAK	216	12"	LIVE OAK	416	7"	LAUREL OAK	306	6"	LIVE OAK
17	9"	LAUREL OAK	117	18"	LAUREL OAK	217	9"	LIVE OAK	417	18"	LAUREL OAK	307	7"	LIVE OAK
18	7"	LAUREL OAK	118	11"	LIVE OAK	218	6"	LIVE OAK	418	13"	LAUREL OAK	308	6"	LIVE OAK
19	11"	LAUREL OAK	119	8"	LAUREL OAK	219	13"	SLASH PINE	419	9"	LAUREL OAK	309	9"	LAUREL OAK
20	17"	CABBAGE PALM	120	11"	LAUREL OAK	220	16"	LAUREL OAK	420	6"	WATER OAK	310	9"	LIVE OAK
21	6"	LAUREL OAK	121	20"	SLASH PINE	221	10"	LAUREL OAK	421	8"	LAUREL OAK	311	13"	LAUREL OAK
22	11"	LAUREL OAK	122	8"	LIVE OAK	222	10"	LAUREL OAK	422	8"	LAUREL OAK	312	9"	LAUREL OAK
23	7"	LAUREL OAK	123	15"	CABBAGE PALM	223	7"	LAUREL OAK	423	8"	WATER OAK	313	6"	LAUREL OAK
24	6"	LAUREL OAK	124	20"	SLASH PINE	224	7"	LAUREL OAK	424	16"	SLASH PINE	314	15"	SAND PINE
25	7"	LAUREL OAK	125	10"	LAUREL OAK	225	17"	SAND PINE	425	11"	LAUREL OAK	315	8"	LIVE OAK
26	10"	LAUREL OAK	126	11"	LAUREL OAK	226	6"	LIVE OAK	426	16"	LAUREL OAK	316	13"	LIVE OAK
27	7"	LAUREL OAK	127	8"	LAUREL OAK	227	11"	LIVE OAK	427	9"	LIVE OAK	317	16"	SLASH PINE
28	9"	LAUREL OAK	128	17"	CABBAGE PALM	228	8"	LIVE OAK	428	7"	LAUREL OAK	318	18"	LAUREL OAK
29	18"	LAUREL OAK	129	8"	LAUREL OAK	229	8"	LIVE OAK	429	18"	LAUREL OAK	319	22"	SLASH PINE
30	14"	SAND PINE	130	7"	LAUREL OAK	230	21"	LAUREL OAK	430	16"	CABBAGE PALM	320	14"	LAUREL OAK
31	16"	LIVE OAK	131	12"	LAUREL OAK	231	8"	LIVE OAK	431	9"	WATER OAK	321	12"	LAUREL OAK
32	11"	CABBAGE PALM	132	10"	LAUREL OAK	232	9"	LAUREL OAK	432	7"	LIVE OAK	322	11"	LAUREL OAK
33	15"	LAUREL OAK	133	15"	SLASH PINE	233	11"	SLASH PINE	433	12"	CABBAGE PALM	323	6"	LAUREL OAK
34	19"	LIVE OAK	134	13"	LAUREL OAK	234	11"	LIVE OAK	434	15"	WATER OAK	324	11"	LAUREL OAK
35	6"	LAUREL OAK	135	8"	LAUREL OAK	235	15"	LAUREL OAK	435	10"	LIVE OAK	325	9"	LAUREL OAK
36	8"	LAUREL OAK	136	14"	SLASH PINE	236	12"	LAUREL OAK	436	8"	CAMPHOR	326	7"	LAUREL OAK
37	7"	LAUREL OAK	137	9"	LAUREL OAK	237	10"	LIVE OAK	437	10"	LIVE OAK	327	14"	SLASH PINE
38	13"	LAUREL OAK	138	10"	LIVE OAK	238	16"	SLASH PINE	438	18"	LIVE OAK	328	8"	LAUREL OAK
39	8"	LAUREL OAK	139	7"	LAUREL OAK	239	8"	LIVE OAK	439	10"	LAUREL OAK	329	16"	LAUREL OAK
40	13"	LAUREL OAK	140	6"	LAUREL OAK	240	9"	LIVE OAK	440	12"	LAUREL OAK	330	6"	LAUREL OAK
41	11"	LAUREL OAK	141	12"	LAUREL OAK	241	10"	LIVE OAK	441	10"	LAUREL OAK	331	12"	LAUREL OAK
42	8"	LAUREL OAK	142	14"	LAUREL OAK	242	9"	LAUREL OAK	442	9"	PIG NUT HICKORY	332	9"	LIVE OAK
43	7"	LAUREL OAK	143	11"	LAUREL OAK	243	7"	CAMPHOR	443	18"	LAUREL OAK	333	9"	LAUREL OAK
44	24"	LAUREL OAK	144	7"	LAUREL OAK	244	16"	LAUREL OAK	444	36"	LAUREL OAK	334	36"	LAUREL OAK
45	6"	LAUREL OAK	145	10"	LAUREL OAK	245	15"	LIVE OAK	445	14"	LAUREL OAK	335	6"	LIVE OAK
46	9"	SAND PINE	146	8"	LAUREL OAK	246	12"	LAUREL OAK	446	13"	LAUREL OAK	336	7"	LAUREL OAK
47	9"	LAUREL OAK	147	8"	LAUREL OAK	247	18"	LAUREL OAK	447	16"	LAUREL OAK	337	6"	LIVE OAK
48	17"	LIVE OAK	148	8"	LAUREL OAK	248	16"	LIVE OAK	448	16"	SLASH PINE	338	8"	LIVE OAK
49	6"	LAUREL OAK	149	9"	LAUREL OAK	249	14"	CABBAGE PALM	449	18"	LAUREL OAK	339	16"	SLASH PINE
50	9"	LAUREL OAK	150	6"	CAROLINA CHERRY LAUREL	250	7"	LAUREL OAK	450	14"	LAUREL OAK	340	6"	LIVE OAK
51	11"	LAUREL OAK	151	8"	LAUREL OAK	251	7"	LAUREL OAK	451	9"	LAUREL OAK	341	8"	LIVE OAK
52	14"	LAUREL OAK	152	10"	CAROLINA CHERRY LAUREL	252	6"	LAUREL OAK	452	21"	LAUREL OAK	342	20"	LAUREL OAK
53	7"	LAUREL OAK	153	8"	LAUREL OAK	253	11"	LAUREL OAK	453	8"	LAUREL OAK	343	14"	SLASH PINE
54	12"	LAUREL OAK	154	18"	SLASH PINE	254	8"	LIVE OAK	454	9"	LAUREL OAK	344	7"	LIVE OAK
55	10"	LAUREL OAK	155	6"	LIVE OAK	255	9"	LAUREL OAK	455	10"	LAUREL OAK	345	20"	LAUREL OAK
56	7"	LAUREL OAK	156	6"	LAUREL OAK	256	8"	LAUREL OAK	456	13"	CABBAGE PALM	346	7"	LIVE OAK
57	7"	LAUREL OAK	157	9"	LAUREL OAK	257	22"	SLASH PINE	457	26"	LAUREL OAK	347	9"	LAUREL OAK
58	10"	LAUREL OAK	158	13"	SAND PINE	258	13"	LAUREL OAK	458	8"	CAMPHOR	348	12"	SLASH PINE
59	10"	LAUREL OAK	159	12"	SAND PINE	259	8"	LAUREL OAK	459	14"	WATER OAK	349	13"	LAUREL OAK
60	10"	LAUREL OAK	160	14"	LIVE OAK	260	13"	LAUREL OAK	460	25"	CAMPHOR	350	8"	LAUREL OAK
61	19"	PIG NUT HICKORY	161	24"	LAUREL OAK	261	15"	LIVE OAK	461	9"	CAMPHOR	351	6"	LAUREL OAK
62	8"	LIVE OAK	162	9"	LIVE OAK	262	18"	LAUREL OAK	462	6"	CAMPHOR	352	19"	SLASH PINE
63	11"	LIVE OAK	163	18"	LIVE OAK	263	9"	LAUREL OAK	463	7"	CAMPHOR	353	6"	LAUREL OAK
64	13"	LIVE OAK	164	10"	LIVE OAK	264	18"	LAUREL OAK	464	16"	CAMPHOR	354	18"	LAUREL OAK
65	8"	LAUREL OAK	165	6"	CAROLINA CHERRY LAUREL	265	11"	LIVE OAK	465	7"	CAMPHOR	355	8"	LAUREL OAK
66	9"	LIVE OAK	166	6"	LAUREL OAK	266	7"	SLASH PINE	466	10"	CAMPHOR	356	8"	LAUREL OAK
67	11"	LIVE OAK	167	15"	SLASH PINE	267	10"	LAUREL OAK	467	17"	CAMPHOR	357	13"	LAUREL OAK
68	8"	LIVE OAK	168	10"	LAUREL OAK	268	10"	LAUREL OAK	468	13"	CAMPHOR	358	13"	LAUREL OAK
69	10"	LAUREL OAK	169	12"	LIVE OAK	269	7"	LAUREL OAK	469	7"	CAMPHOR	359	11"	LAUREL OAK
70	6"	LAUREL OAK	170	6"	CAROLINA CHERRY LAUREL	270	10"	LAUREL OAK	370	19"	LAUREL OAK	360	10"	LAUREL OAK
71	9"	LIVE OAK	171	6"	CAROLINA CHERRY LAUREL	271	8"	LAUREL OAK	371	20"	LAUREL OAK	361	9"	LAUREL OAK
72	18"	LIVE OAK	172	11"	LIVE OAK	272	10"	LAUREL OAK	372	6"	LIVE OAK	362	10"	LAUREL OAK
73	7"	LIVE OAK	173	13"	LIVE OAK	273	9"	LAUREL OAK	373	15"	LAUREL OAK	363	11"	LAUREL OAK
74	13"	LAUREL OAK	174	7"	LIVE OAK	274	11"	LAUREL OAK	374	14"	LAUREL OAK	364	7"	SWEET BAY MAGNOLIA
75	15"	LIVE OAK	175	11"	LAUREL OAK	275	17"	SLASH PINE	375	9"	LAUREL OAK	365	7"	LAUREL OAK
76	9"	LIVE OAK	176	9"	LIVE OAK	276	17"	LAUREL OAK	376	15"	LIVE OAK	366	7"	SWEET BAY MAGNOLIA
77	12"	LAUREL OAK	177	15"	CABBAGE PALM	277	8"	LIVE OAK	377	9"	LAUREL OAK	367	6"	LAUREL OAK
78	11"	LIVE OAK	178	12"	CAMPHOR	278	7"	LIVE OAK	378	7"	LAUREL OAK	368	15"	LAUREL OAK
79	8"	LIVE OAK	179	7"	CAMPHOR	279	6"	LAUREL OAK	379	6"	LAUREL OAK	369	11"	LAUREL OAK
80	12"	LIVE OAK	180	9"	CAMPHOR	280	10"	LAUREL OAK	380	6"	LAUREL OAK	370	19"	

ALTA/NSPS LAND TITLE SURVEY



CURVE	RADIUS	ARC LENGTH	CHORD LENGTH	CHORD BEARING	DELTA ANGLE
C1	1509.86'	247.63'	247.35'	S 83°57'38" E	9°23'41"
C2	1809.86'	305.54'	305.17'	N 84°05'35" W	9°40'21"

LEGEND

- AC - AIR CONDITIONER
- BB - BOTTOM OF BANK
- BHM - BUILDING HEIGHT MEASUREMENT
- BF - BACK FLOW PREVENTER
- BM - BENCHMARK
- BR - BOLLARD
- E - BURIED ELECTRIC LINE
- C - BURIED CABLE TELEVISION LINE
- CALC - CALCULATED
- CRM - CALCULATED & MEASURED
- CA - CENTRAL ANGLE
- CW - CONCRETE BLOCK WALL
- CC - COVERED CONCRETE
- CCR - CERTIFIED CORNER RECORD
- CF - CONCRETE FLUME
- CHW - CONCRETE HEADWALL
- CL - CHAIN LINE FENCE
- CL - CENTERLINE
- CM - CONCRETE MONUMENT
- CMF - CORRUGATED METAL PIPE
- CO - CLEAN OUT
- CONC - CONCRETE
- COVD - COVERED
- CP - CONCRETE PAD
- CP - CURB INLET
- CW - CONCRETE WALKWAY
- D - BURIED STORM/RAIN LINE
- DB - DISCREED
- DB - DEED BOOK
- DE - DRAINAGE EASEMENT
- DI - DOT INLET
- DP - DUMPSTER PAD
- DR - DRIVEWAY
- EN - EASEMENT NUMBER
- EB - ELECTRIC BOX
- EM - ELECTRICAL METER
- EL - ELEVATION
- ESMT - EASEMENT
- EP - EDGE OF PAVEMENT
- FPOT - FLORIDA DEPARTMENT OF TRANSPORTATION
- FRN - FEDERAL PERMANENT REFERENCE NETWORK
- FRM - FLOOD INSURANCE RATE MAP
- FFE - FINISHED FLOOR ELEVATION
- FFH - FIRE HYDRANT
- FM - BURIED FORCE MAIN LINE
- FND - FOUND
- FB - BURIED FIBER OPTIC CABLE LINE
- FC - FIBER OPTIC CABLE BOX
- FP - FLAG POLE
- FG - BURIED GAS LINE
- GM - GAS METER
- GV - GAS VALVE
- GT - GREAT TRAP MANHOLE
- GY - GUY WIRE ANCHOR
- H - HANDICAP PARKING
- HDP - HIGH DENSITY POLYETHYLENE PIPE
- INSTA - RECORD INSTRUMENT#
- IRV - INVERT ELEVATION
- IR - IRON PIPE
- IR - IRON ROD
- IR - IRON ROD
- LE - ARC LENGTH
- LB - LICENSED BUSINESS
- LP - LIGHT POLE
- LS - LICENSED SURVEYOR
- LSA - LANDSCAPED AREA
- MF - METAL FENCE
- MS - METAL SHED
- MS - MITERED END SECTION
- MND - MONITORING WELL
- NAD - NAD 83
- NAVD - NORTH AMERICAN DATUM
- NAVD - NORTH AMERICAN DATUM
- NAVD - NATIONAL GEODETIC VERTICAL DATUM
- NTS - NOT TO SCALE
- ORB - OFFICIAL RECORDS BOOK
- OW - OVERHEAD WIRE
- PB - PLAT BOOK
- PC - POINT OF CURVATURE
- PCC - POINT OF COMPOUND CURVATURE
- PP - PER PLANS
- PA - PAGE
- PI - POINT OF INTERSECTION
- POB - POINT OF BEGINNING
- POC - POINT OF COMMENCEMENT
- PRC - POINT OF REVERSE CURVATURE
- PS - PARKING SPACES
- PSM - PROFESSIONAL SURVEYOR & MAPPER
- PSP - PEDESTRIAN SIGNAL POLE
- PT - POINT OF TANGENCY
- PVC - POLYVINYL CHLORIDE PIPE
- R - CURVE RADIUS
- RC - REINFORCED CONCRETE PIPE
- RU - REUSE WATER LINE
- RU - REUSE WATER METER
- RU - REUSE WATER VALVE
- RP - RAMP
- R/W - RIGHT OF WAY
- SM - SANITARY MANHOLE
- S - BURIED SANITARY LINE
- S - SURVEY
- SF - SQUARE FEET
- SP - STATE PLANE
- SDO - SHOWN FOR DIRECTION ONLY
- SN - SIGN
- SWF - STOCK WIRE FENCE
- SV - SEWER VALVE
- XXX.00 - SPOT ELEVATION
- ST - STORM MANHOLE
- ST - BURIED TELECOMMUNICATIONS LINE
- ST - TELECOMMUNICATIONS MANHOLE
- ST - STORM INLET
- TB - TOP OF BANK
- CTP - TRAFFIC SIGNAL POLE
- TR - TRAFFIC SIGN
- TR - TRANSFORMER/JUNCTION BOX
- TR - TELEPHONE RISER
- TR - TRAFFIC SIGNAL BOX
- TR - TELEVISION BOX
- TYP - TYPICAL
- UN - UNDERGROUND UTILITY
- UE - UTILITY EASEMENT
- UP - UTILITY POLE
- UM - UTILITY MARKER
- VCP - VITRIFIED CLAY PIPE
- VF - VINYL FENCE
- W - BURIED WATER LINE
- WF - WOOD FENCE
- WS - WOOD SHED
- WV - WATER VALVE
- WM - WATER METER
- YD - YARD DRAIN

ADDRESS:
UNASSIGNED W SR 46
& HENDERSON LN
SANFORD, FL 32771

Job Information
JOB NO. 907107
CF NO. SEM-68-28-LOT2
FIELD DATE: 11/17/2025
DRAWN BY: GJL

Revisions

DATE	DESCRIPTION	BY
12/5/25	ARBORIST REPORT	PT
2/10/26	R/W LABEL	JB
2/20/26	ADDITIONAL TOPOGRAPHY	GLT

Altamax Surveying
910 Belle Avenue, Suite 1100
Casselberry, FL 32708
Phone: 407-677-0200
Licensed Business No. 7833
www.altamaxsurveying.com