






EXHIBIT B

This item has been electronically signed and sealed by Jennifer L. Teliga, P.E. on the Time Stamp shown using digital signature. Printed copies of this document are not considered signed and sealed and the signature must be verified on any electronic copy.

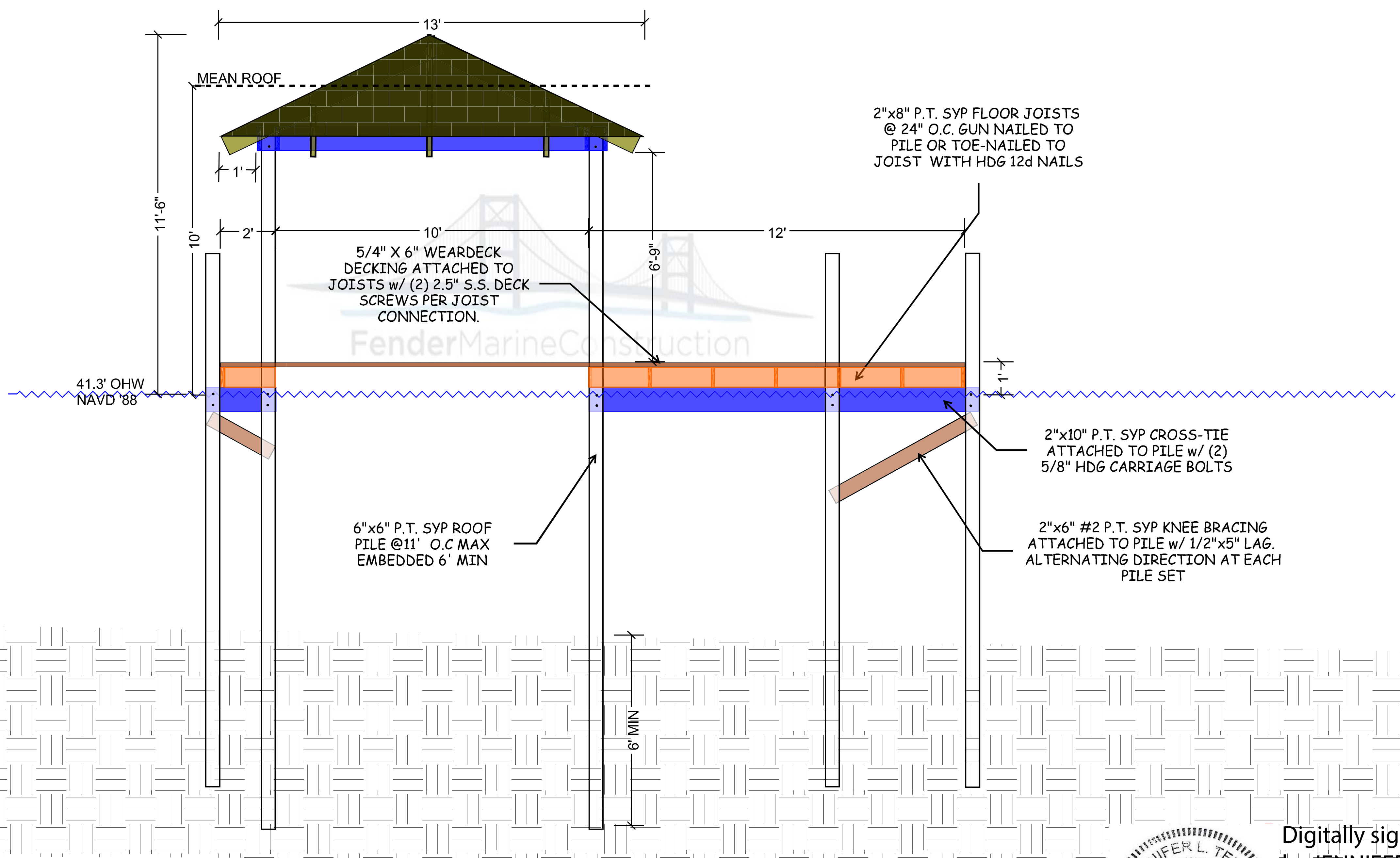
LEGEND

-  = 6"x6" P.T. SYP 0.60 CCA PILE
-  = 2"x10" #2 P.T. SYP 0.40 ACQ OR 0.15 CA-C CROSS TIE
-  = 2"x8" #2 P.T. SYP 0.40 ACQ OR 0.15 CA-C JOIST
-  = 2"x6" #2 P.T. SYP 0.40 ACQ OR 0.15 CA-C KNEE BRACING
-  = 2"x6" #1 P.T. SYP .25 ACQ OR .10 CA-C DECK BOARDS



FenderMarineConstruction
FENDERMARINE CONSTRUCTION
 8010 SUNPORT DR., UNIT 123
 ORLANDO, FL 32809
 (407)481-8383
 WWW.FENDERMARINE.COM
 CBC1263789

TERMINAL PLATFORM WEST
ELEVATION
 for
TODD LUKE DOCK
 at
3066 KINGFISHER POINT
CHULUOTA, FL



ENGINEER:

JENNIFER L. TELIGA, P.E.
 P.E. # 64621
 2901 BLUESTEM LN.
 CLERMONT, FL 34714
 (321)662-7503

JOB: *Todd Luke Dock*

DATE: *2/21/2024*

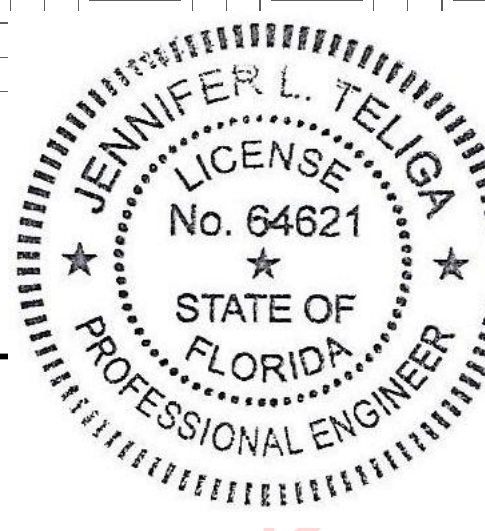
VERSION: *3*

SCALE: *2"=5'*

DRAWN BY: *R.A.H.*

APPROVED BY:

SHEET NO.:
 S-04



Digitally signed
 by JENNIFER
 TELIGA
 Date:
 2024.02.23
 09:42:03 -05'00'