

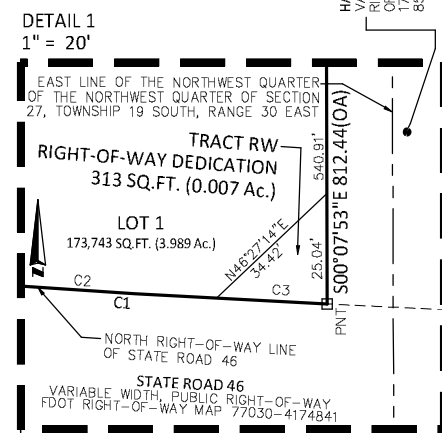
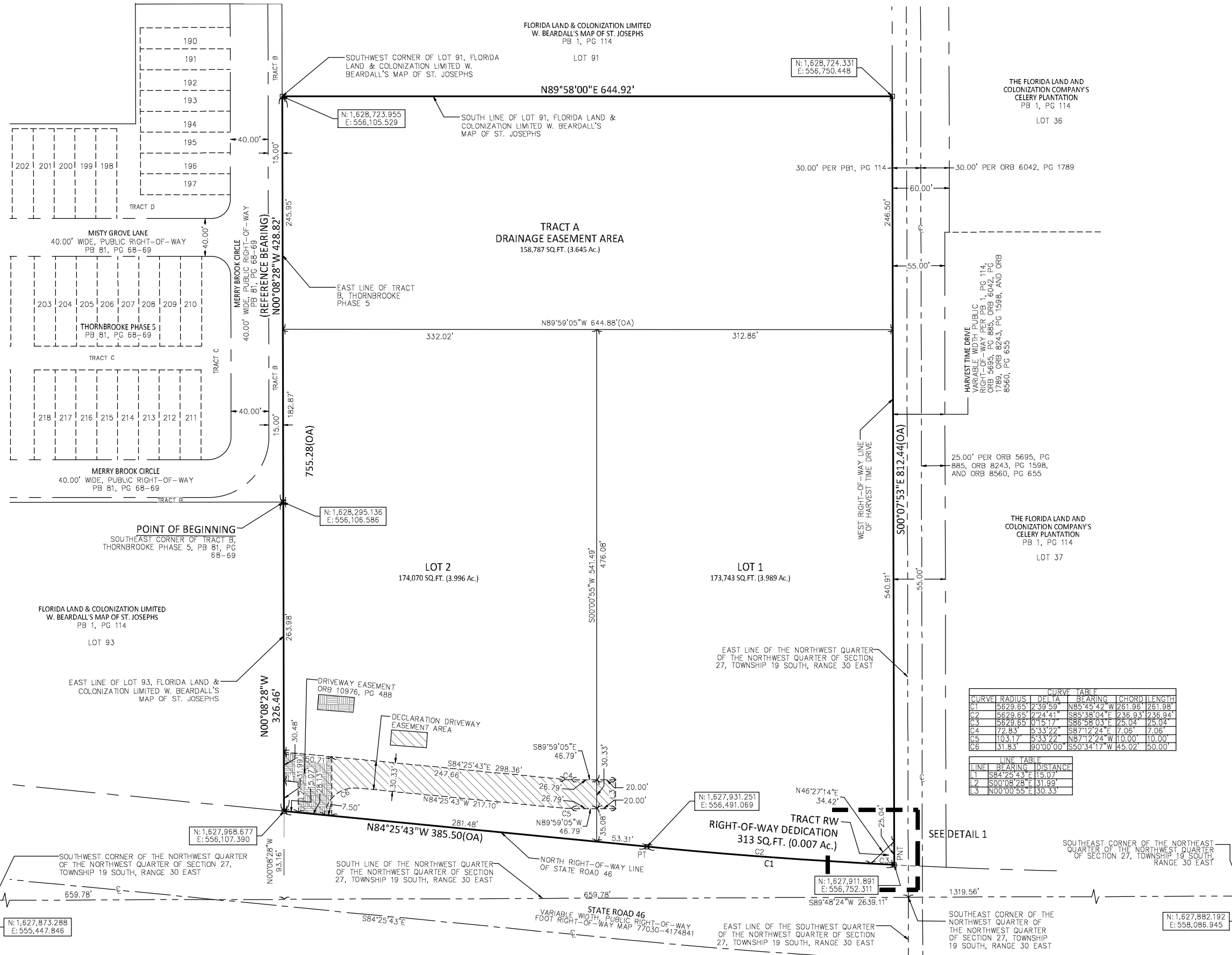
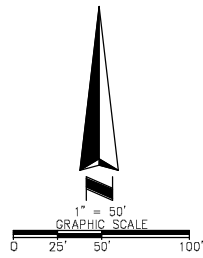
# S.R. 46 COMMERCIAL

SHEET 2 OF 2

PLAT BOOK

PAGE

A REPLAT OF A PORTION OF LOT 92 OF THE PLAT OF FLORIDA LAND & COLONIZATION LIMITED W. BEARDALL'S MAP OF ST. JOSEPHS, RECORDED IN PLAT BOOK 1, PAGE 114 OF THE PUBLIC RECORDS OF SEMINOLE COUNTY, FLORIDA, SITUATED WITHIN THE NORTHWEST QUARTER OF THE NORTHWEST QUARTER OF SECTION 27, TOWNSHIP 19 SOUTH, RANGE 30 EAST, SEMINOLE COUNTY, FLORIDA



CURVE	RADIUS	DELTA	BEARING	CHORD LENGTH
C1	5629.65	2°39'59"	N85°45'42"W	261.98
C2	5629.65	2°24'41"	S85°38'04"E	236.94
C3	5629.65	0°15'17"	S88°58'03"E	25.04
C4	72.83	5°33'22"	S87°12'24"E	7.06
C5	103.17	5°33'22"	N87°12'24"W	10.00
C6	31.83	90°00'00"	S50°34'17"W	45.02

LINE	BEARING	DISTANCE
L1	S84°25'43"E	15.07
L2	S00°08'28"E	31.99
L3	N00°00'55"E	30.33

**SHEET INDEX**  
 SEE SHEET 1 OF 2 FOR VICINITY MAP, LEGEND, LEGAL DESCRIPTION, NOTES, AND CERTIFICATIONS  
 SEE SHEET 2 OF 2 FOR DETAILED VIEW OF PLAT

**ASM**  
 AMERICAN SURVEYING & MAPPING, INC.  
**NDDS** NATIONAL DUE DILIGENCE SERVICES  
 A DIVISION OF AMERICAN SURVEYING & MAPPING, INC.  
 221 Circle Drive, Maitland, FL 32751 Phone: 407-426-7979  
 LB#6393 nationalduediligenceservices.com