

Raymond Avenue Partial Right-of-Way Vacate

Board of County Commissioners Meeting
February 11, 2025

RAYMOND AVENUE PARTIAL RIGHT-OF-WAY VACATE

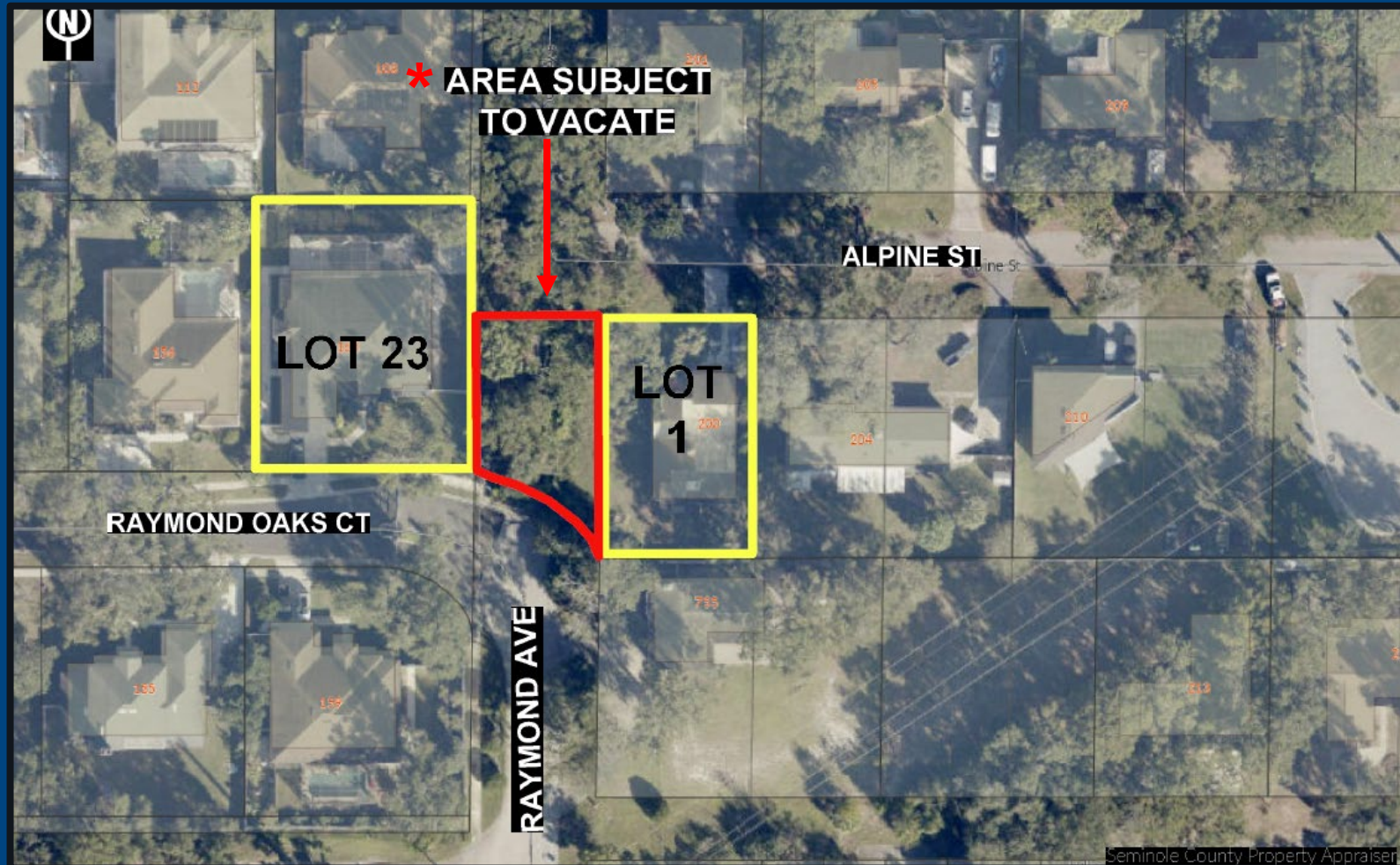
Applicants: David & Shana Larson, Maria Fernandez,
& Jared Pittman

Request: Adopt the Resolution vacating and abandoning a portion of an undeveloped right-of-way known as Raymond Avenue located in Section 11, Township 21, Range 29 of Seminole County, Florida, for properties more particularly known as 200 Alpine Street, and 160 Raymond Oaks Court, Altamonte Springs.

RAYMOND AVE PARTIAL RIGHT-OF-WAY VACATE



RAYMOND AVE PARTIAL RIGHT-OF-WAY VACATE



* Location of required easement

RAYMOND AVE PARTIAL RIGHT-OF-WAY VACATE



RAYMOND AVE PARTIAL RIGHT-OF-WAY VACATE

Requested Board Action:

Adopt the Resolution vacating and abandoning a portion of an undeveloped right-of-way known as Raymond Avenue located in Section 11, Township 21, Range 29 of Seminole County, Florida, for properties more particularly known as 200 Alpine Street and 160 Raymond Oaks Court, Altamonte Springs.