

# Development Services Public Hearing Items

Board of County Commissioners Meeting

May 14, 2024

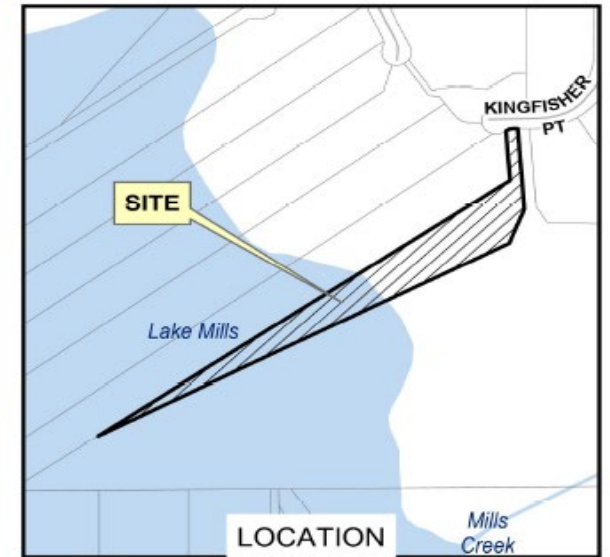
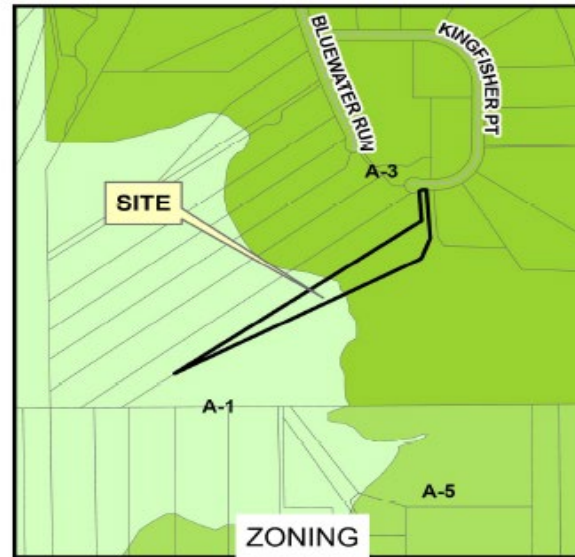


# 3066 KINGFISHER POINT BOAT DOCK/HOUSE DREDGE AND FILL PERMIT

## **Request:**

Consider approval of a 1,244 square foot boat dock/house located on the south side of Kingfisher Point, approximately 3,313 feet south of Brumley Road, more particularly known as 3066 Kingfisher Point (Alan Horn, Applicant) – District1 Dallari (**Rebecca Hammock, Director, Development Services, Presented by Mary Robinson, Planner**)

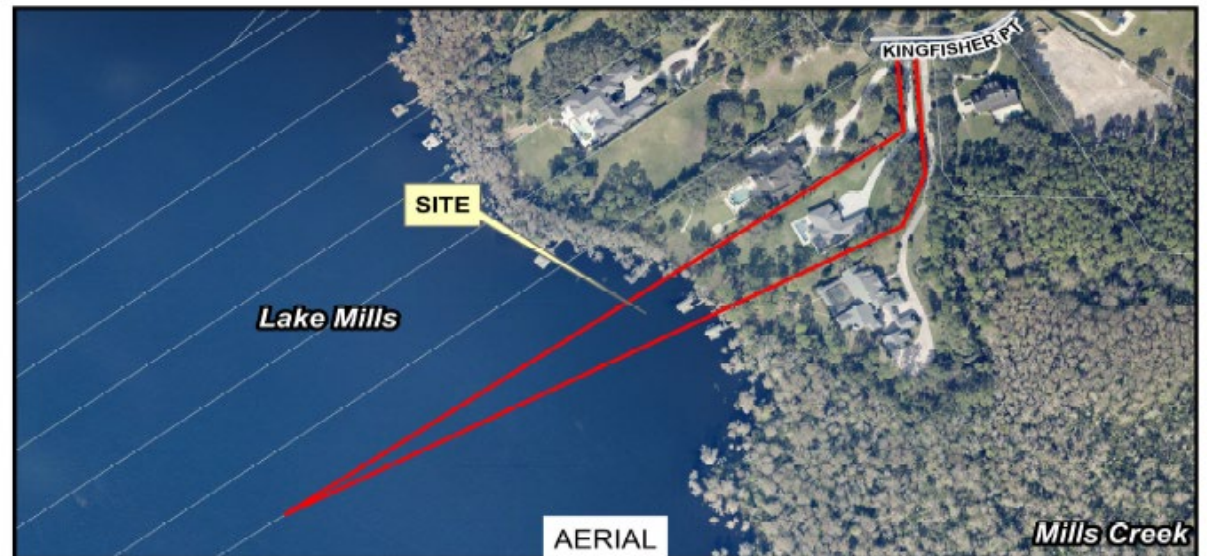
# ZONING AND LOCATION MAP



GREGORY & ANA LUKE  
3066 KINGFISHER PL  
CHULUOTA, FL 32766

SEMINOLE COUNTY  
BOARD OF COUNTY COMMISSIONERS  
MAY 14, 2024

PARCEL #22-21-32-5QQ-0000-0150





# 3066 KINGFISHER POINT BOAT DOCK/HOUSE DREDGE AND FILL PERMIT

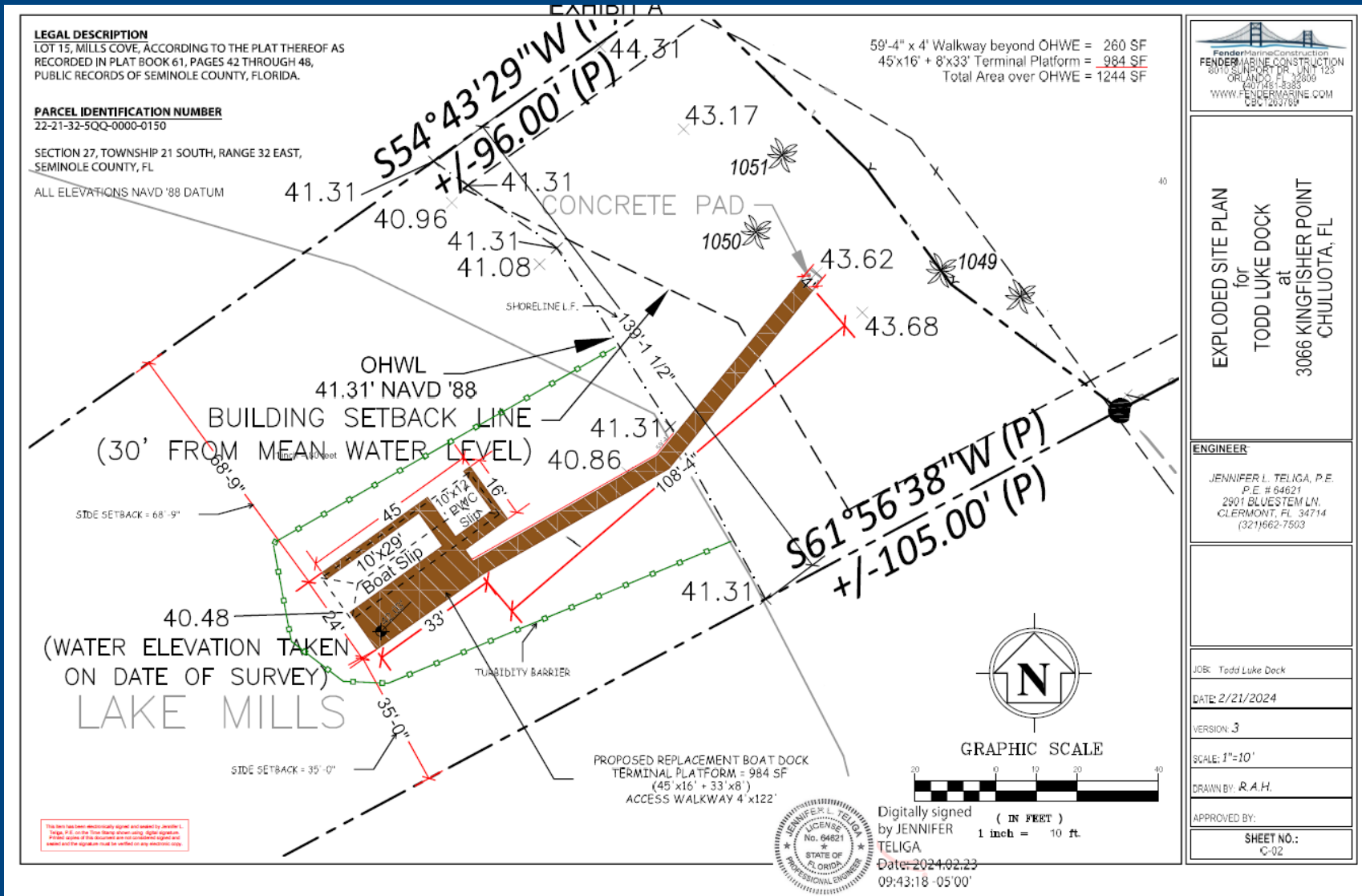
The Applicant is proposing to construct a boat dock/house totally 1,244 square feet. This new boat dock/house is a replacement for an existing dock.


Chapter 70 Dredge and Filling of the land development code contains seven (7) items to be considered prior to the issuance of a boat dock/house permit. This application complies with these 7 items and meets the height regulation required by the Land Development Code of Seminole County (LDCSC).

Section 70.6 (g) of the LDCSC requires a public hearing before the Board of County Commissioners on requests for building permits for boat docks that exceed 1,000 square feet.

The Applicant was issued a General Permit for a boat dock/house by the Florida Department of Environmental Protection.

# 3066 KINGFISHER POINT BOAT DOCK/HOUSE DREDGE AND FILL PERMIT





**FENDER MARINE CONSTRUCTION**  
8010 SUNSHINE DR, UNIT 123  
ORLANDO, FL 32809  
(407) 461-3888  
WWW.FENDERMARINE.COM  
CSC 230789

EXPLODED SITE PLAN  
for  
TODD LUKE DOCK  
at  
3066 KINGFISHER POINT  
CHULUOTA, FL

**ENGINEER:**  
JENNIFER L. TELIGA, P.E.  
P.E. # 64621  
2901 BLUESTEM LN,  
CLERMONT, FL 34714  
(321)662-7503

JOB: Todd Luke Dock

DATE: 2/21/2024

VERSION: 3

SCALE: 1"=10'

DRAWN BY: R.A.H.

APPROVED BY:

SHEET NO.:  
C-02



# 3066 KINGFISHER POINT BOAT DOCK/HOUSE DREDGE AND FILL PERMIT

## Requested Board Action:

Request the Board of County Commission approve the request for a 1,244 square foot boat dock/house located on the south side of Kingfisher Point, approximately 3,313 feet south of Brumley Road, more particularly known as 3066 Kingfisher Point.